

U. S. Public Land Corner Maintenance

#103

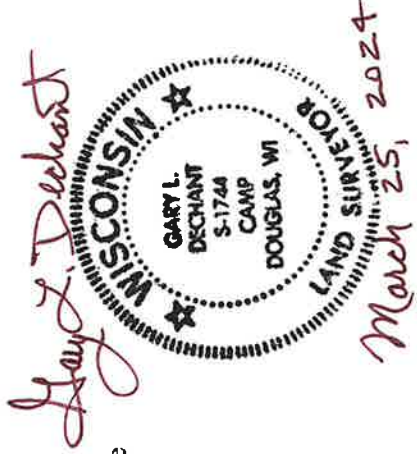
Corner: SE Sec. 26, T18N-R2W

21802260000

Date	Crew	Monument type
March 20, 2024	Zachariah P. Dechant Gary L. Dechant	Found Harrison intact at two way fence corner, sign 1/2' south

- 1) Set 5/8"x24" rebar, in center of trail
- 2) Set 5/8"x24" rebar, between 3 stones
- 3) Set 5/8"x24" rebar, 5' NE of 18" Red Pine
- 4) Set 5/8"x24" rebar, in center of trail

Trees double blazed
Compass bearings



CERTIFICATE

CERTIFIED LAND CORNER

No. 103

I, Harley A. Sime, do hereby certify that on the _____ day of October 1974, I found (evidence) ~~(no evidence)~~ of the S.W. corner of Section 25, T18 N, R 2 W Fourth Principal Meridian, and I re-established said corner according to the Wisconsin Statutes as shown and described hereon.

History of original corner establishment:

Description of corner evidence found:

Dated this 23rd day of Nov. 1977.

Intersected fence corners, Harrison up 3".

See Reverse Side For Maintenance

Harley A. Sime
County Surveyor
Title

Approved: HARLEY A. SIME
MONROE CO. SURVEYOR

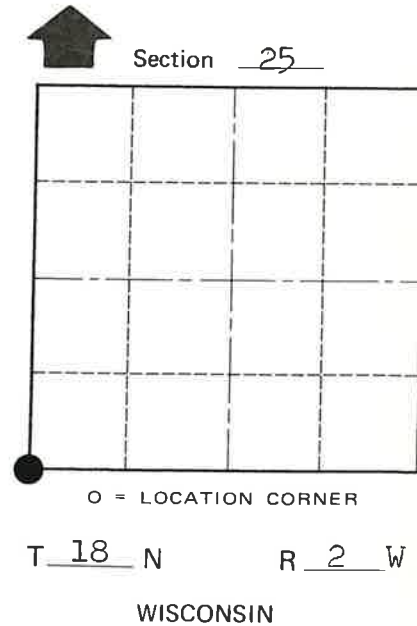
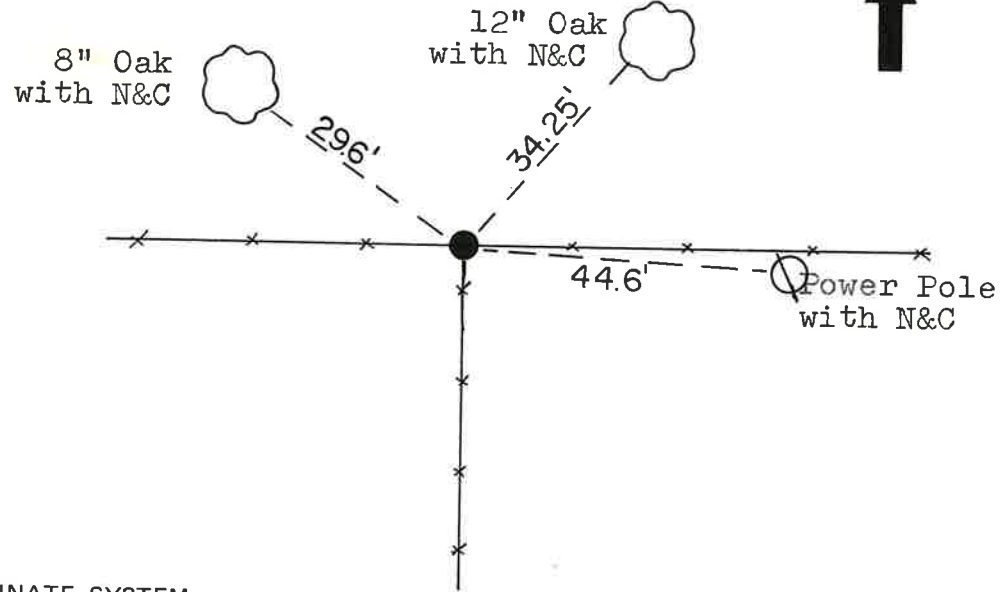
COUNTY SURVEYOR FORM NO. 1

Description of corner and witness monuments, references and accessories used to perpetuate the original or re-established location of this corner:

Witnesses to corner location:

K. Pritzlaff

D. Malliet



SURVEY CONTROL ORDER

Horizontal	_____
Vertical	_____

WISCONSIN COORDINATE SYSTEM

Corner	East (X)	North (Y)	Elevation (Z)	Zone
Control Sta. Name				

City, Village or Town Greenfield

County of Monroe