

U. S. Public Land Corner Maintenance

94

Corner: W1/4 Sec. 30, T16N-R1E

21601252000

<u>Date</u>	<u>Crew</u>	<u>Monument type</u>
February 29, 2024	Zachariah P. Dechant Gary L. Dechant	Found Harrison intact, 25' east of remnants of fence corner, sign 1/2' north, on steep slope

- 1) Set 5/8"x24" rebar, SW side of stone
- 2) Set 5/8"x24" rebar, stone over bar
- 3) Set 5/8"x24" rebar, north side of stone, 7 east of original bearing tree
- 4) Set 5/8"x24" rebar, east side of small stone ledge

<u>Bearing</u>	<u>Distance</u>
N30E	4.74'
S37E	13.76'
S10W	13.14'
N40W	11.48'

Compass bearings
Trees double blazed



I, Gary L. Dechant, do hereby certify that on the 19th day of December 1984, I found (evidence) (~~no evidence~~) of the W¹/₄ corner of Section 30, T 16 N, R 1 E Fourth Principal Meridian, and I re-established said corner according to the Wisconsin Statutes as shown and described hereon.

Dated this 21st day of Dec. 1984.

Gary L. Dechant

Registered Land Surveyor, 1744
Title

History of corner establishment since Original Government Survey

No known history since the original government survey.

Description of corner evidence found:

Found original bearing tree and set the corner by the bearing and distance given in the original survey notes. from the tree. Scar from blaze was still evident.

Also rough chained from the forty corner to the west as occupied and found the distance to be 1319'±, further supporting this corner.

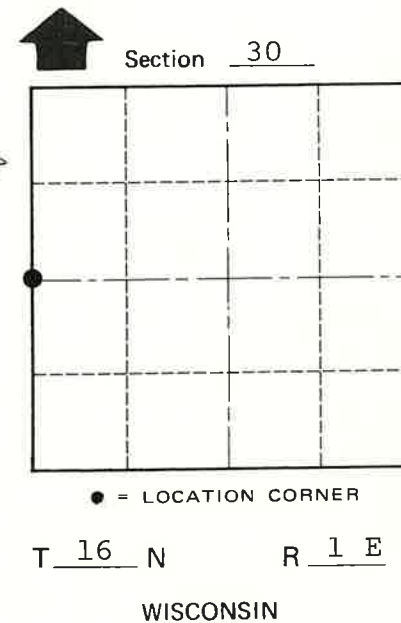
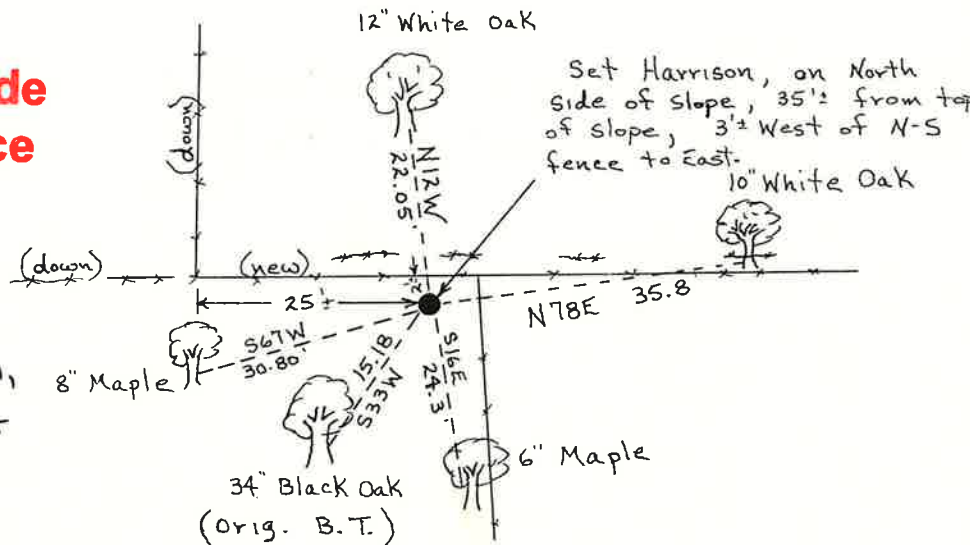
Description of corner and witness monuments, references and accessories used to perpetuate the original or re-established location of this corner:

Witnesses to corner location:

Larry A. Feddersen

Gary L. Dechant

See Reverse Side For Maintenance



(Trees double blazed with N&C's)

COUNTY SURVEYOR FORM NO. 1

SURVEY CONTROL ORDER

Horizontal	_____
Vertical	_____

WISCONSIN COORDINATE SYSTEM

Corner	East (X)	North (Y)	Elevation (Z)	Zone
Control Sta. Name				

~~City, Village or~~ Town Clifton
County of Monroe