

U. S. Public Land Corner Maintenance

74

Corner: W1/4 Sec. 19, T16N-R1E

21601242000

<u>Date</u>	<u>Crew</u>	<u>Monument type</u>
February 29, 2024	Zachariah P. Dechant Gary L. Dechant	Found Harrison intact at fence corner, 5' south of trail, survey post on north side

- 1) Set 5/8"x24" rebar, 5' NW of 14" Hickory (1984 BT), stone over bar
- 2) Set 5/8"x24" rebar, 6' NW of 16" White Oak, stone over bar
- 3) Set 5/8"x24" rebar, 4' NE of 8" Black Cherry
- 4) Set 5/8"x24" rebar, 2' east of large boulder

Compass bearings
Trees double blazed

<u>Bearing</u>	<u>Distance</u>
S64E	36.07'
S29E	41.70'
S33W	26.82'
N42W	30.98'



I, Gary L. Dechant, do hereby certify that on the 11th day of December 19 84, I found (evidence) (~~no evidence~~) of the W $\frac{1}{4}$ corner of Section 19, T16 N, R1E Fourth Principal Meridian, and I re-established said corner according to the Wisconsin Statutes as shown and described hereon.

Dated this 21st day of Dec. 19 84.

Gary L. Dechant

Registered Land Surveyor, 1744
Title

History of corner establishment since Original Government Survey

No known history since the original government survey.

Description of corner evidence found:

Accepted fence corner as the best available evidence as it fits the Original Government Survey within 1'+ to the NW corner of Section 30.

See Reverse Side For Maintenance

COUNTY SURVEYOR FORM NO. 1

Description of corner and witness monuments, references and accessories used to perpetuate the original or re-established location of this corner:

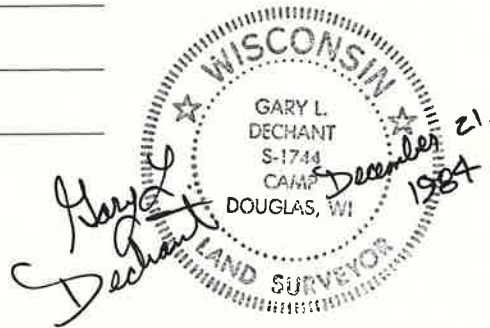
Witnesses to corner location:

Larry A. Feddersen, S-1226

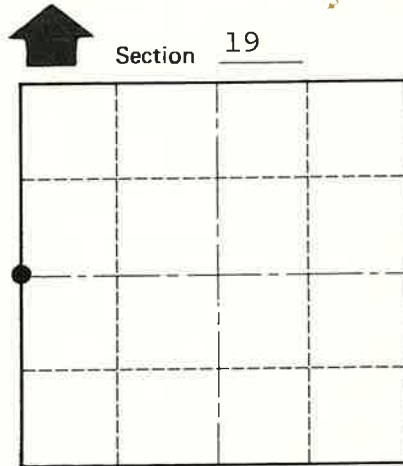
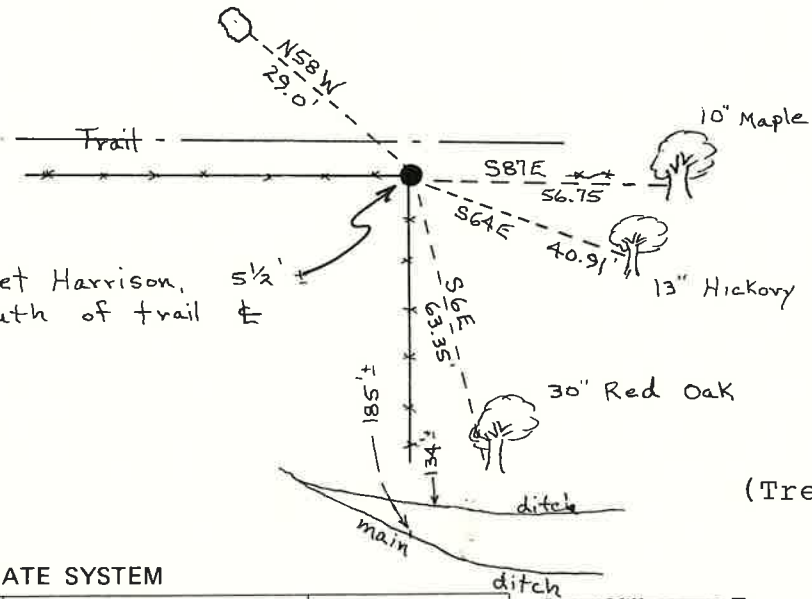
Dan Rattle

Gary L. Dechant

2.5' x 4.5' x 6' Boulder, distance to upper most point at the SE corner of boulder



Set Harrison, 5 1/2' South of trail



● = LOCATION CORNER

T 16 N R 1E
WISCONSIN

(Trees double blazed with N&C's)

SURVEY CONTROL ORDER

Horizontal	_____
Vertical	_____

WISCONSIN COORDINATE SYSTEM

Corner	East (X)	North (Y)	Elevation (Z)	Zone
Control Sta. Name				

City, Village or Town Clifton
County of Monroe