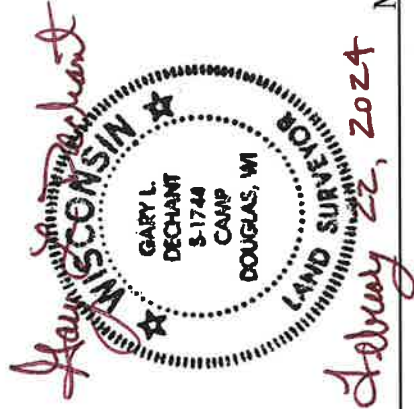


U. S. Public Land Corner Maintenance

54

Corner: W1/4 Sec. 18, T16N-R1E

21601132000



<u>Date</u>	<u>Crew</u>	<u>Monument type</u>
February 21, 2024	Zachariah P. Dechant Gary L. Dechant	Found TCP east iron monument at remnants of fence corner. TCP faces east. Placed stones around monument, sign 1' north.

- 1) Set 5/8"x24" rebar, stone over bar
- 2) Set 5/8"x24" rebar, down 16" in field
- 3) Set 5/8"x24" rebar, down 10" in field
- 4) Set 5/8"x24" rebar, 4' SE of 10" Black Cherry (1995 BT), stone over bar

<u>Bearing</u>	<u>Distance</u>
N60E	33.58'
S42E	29.49'
S43W	39.54'
N56W	21.54'

Compass bearings
Trees double blazed

I, Gary L. Dechant, do hereby certify that on the 17th day of February 19 95, I found (evidence) (~~no evidence~~) of the W/4 corner of Sec. 18, T 16 N, R 1 E Fourth Principal Meridian, and I re-established said corner according to the Wisconsin Statutes as shown and described hereon.

Dated this 20th day of Feb. 19 95.

Gary L. Dechant

R. L. S. 1744
Title

History of corner establishment since Original Government Survey

D. Marten shows setting 1 1/4" iron bar in an unrecorded survey in 1973.

Description of corner evidence found:

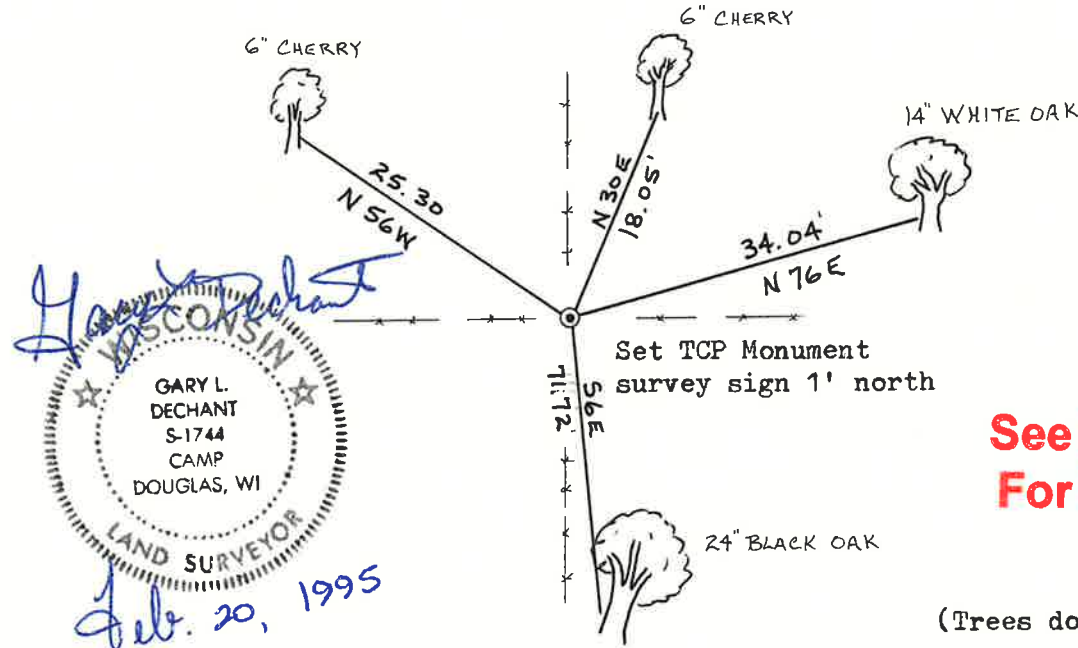
Could not find Marten's iron bar. Found a steel fence post at old occupied corner. Accepted post location as corner as it fits Marten's unrecorded surveyed and fits remains of old rotted stump believed to be original B.T. 8" Black Oak N62 1/2 E, 4.78 lks. Replaced fence post with County TCP monument. Set survey sign 1' north.

Description of corner and witness monuments, references and accessories used to perpetuate the original or re-established location of this corner:

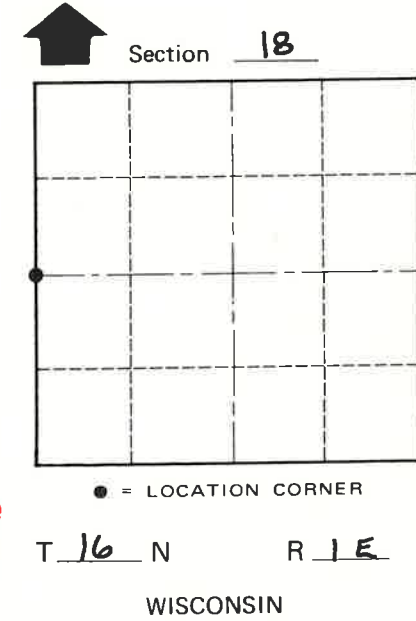
Witnesses to corner location:

David E. Madison

Gary L. Dechant



Gary L. Dechant
GARY L. DECHANT
S-1744
CAMP DOUGLAS, WI
LAND SURVEYOR
Feb. 20, 1995



See Reverse Side For Maintenance

(Trees doubled blazed w/20d nail set)

COUNTY SURVEYOR FORM NO. 1

SURVEY CONTROL ORDER

Horizontal _____

Vertical _____

WISCONSIN COORDINATE SYSTEM

Corner	East (X)	North (Y)	Elevation (Z)	Zone
Control Sta. Name				

City, Village or Town CLIFTON
County of MONROE