

U. S. Public Land Corner Maintenance

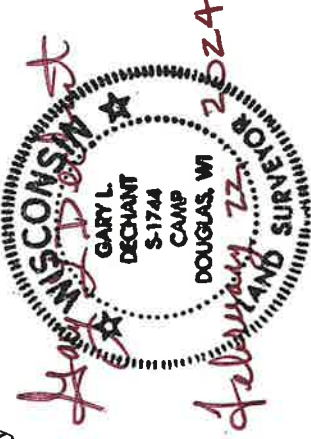
53

Corner: NW Sec. 18, T16N-R1E

21601120000

Date	Crew	Monument type
February 21, 2024	Zachariah P. Dechant Gary L. Dechant	Found Harrison intact at remains of 3-way fence corner. Verified by all four 1995 bearing trees. Sign 1' west
1) Set 5/8"x24" rebar, SW side of large stone		Bearing Distance
2) Set 5/8"x24" rebar, 4' NW of 17" White Oak (1995 BT)		N33E 43.74'
3) Set 5/8"x24" rebar, 4' NE of 5" Black Cherry		S30E 30.68'
4) Set 5/8"x24" rebar, stone over bar		S49W 48.57'
		NW 37.39'

Compass bearings
Trees double blazed



I, Gary L. Dechant, do hereby certify that on the 20th day of Jan. 19 95, I found (evidence) (~~no evidence~~) of the NW corner of Sec. 18, T 16 N, R 1 E Fourth Principal Meridian, and I re-established said corner according to the Wisconsin Statutes as shown and described hereon.

Dated this 6th day of Feb. 19 95.

Gary L. Dechant
R.L.S. 1744

Title

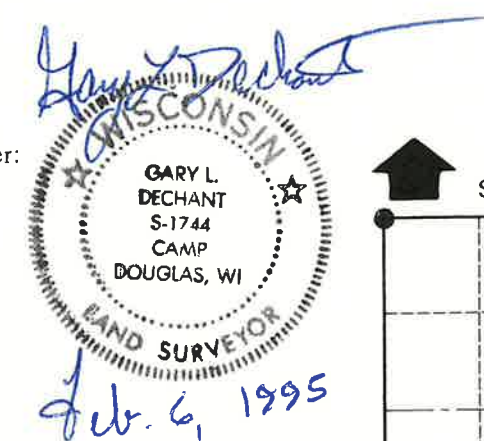
History of corner establishment since Original Government Survey

No known recorded history since the original government survey.

Description of corner evidence found:

Accepted remains of fence corner as best available evidence. Fits other section data extremely well.

See Reverse Side For Maintenance

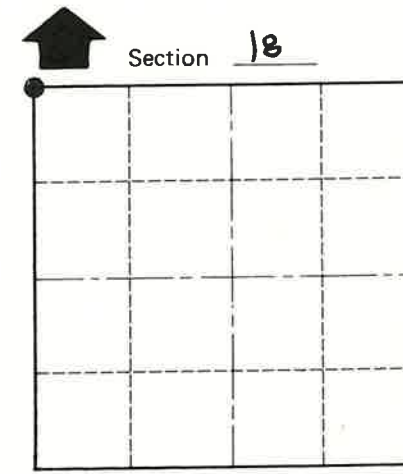
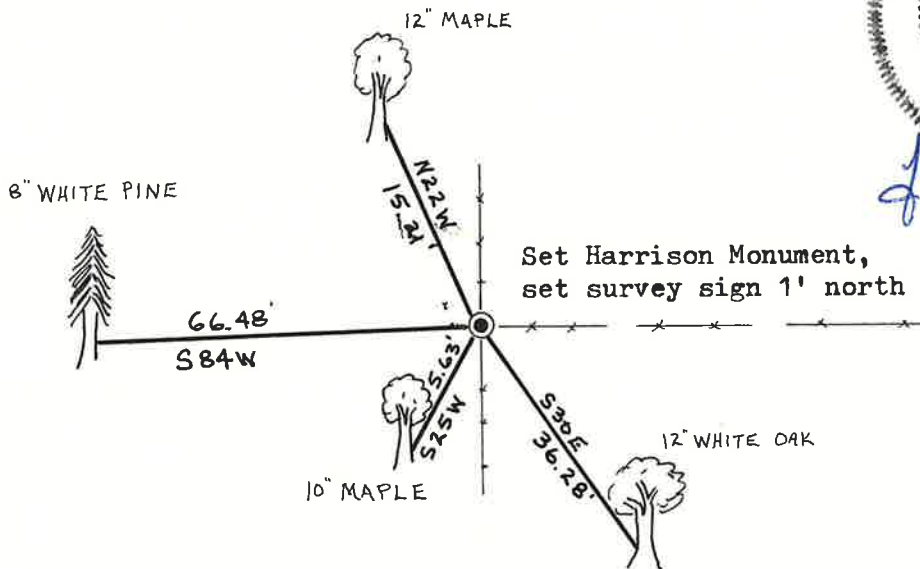


Description of corner and witness monuments, references and accessories used to perpetuate the original or re-established location of this corner:

Witnesses to corner location:

David E. Madison

Gary L. Dechant



● = LOCATION CORNER

(Trees double blazed w/20d nail set)

COUNTY SURVEYOR FORM NO. 1

SURVEY CONTROL ORDER

Horizontal	_____
Vertical	_____

WISCONSIN COORDINATE SYSTEM

Corner	East (X)	North (Y)	Elevation (Z)	Zone
Control Sta. Name				

City, Village or Town CLIFTON
County of MONROE