

# U. S. Public Land Corner Maintenance

# 20

Corner: E1/4 Sec. 1, T16N-R1W

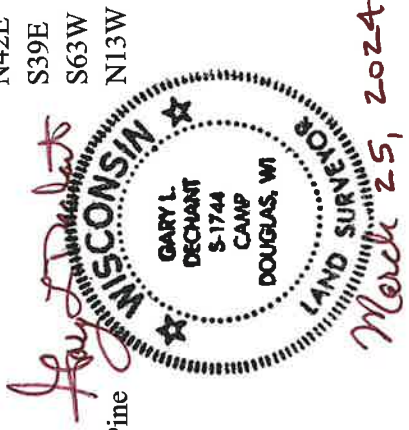
21601012000

Date	Crew	Monument type
March 21, 2024	Zachariah P. Dechant Gary L. Dechant	Found Harrison intact at four way fence corner sign 1/2' west

- 1) Set 5/8"x24" rebar, 4' SW of 13" White Oak
- 2) Set 5/8"x24" rebar, 4' NW of 17" Black Cherry
- 3) Set 5/8"x24" rebar, 5' NE of 11" Maple
- 4) Set 5/8"x24" rebar, 4' SE of 12" - 4" double White Pine

Trees double blazed  
Compass bearings

Bearing	Distance
N42E	30.70'
S39E	13.93'
S63W	24.13'
N13W	65.00'



CERTIFICATE

CERTIFIED LAND CORNER

21601012000

No. 20

I, Lawrence A. Feddersen, do hereby certify that on the 28th day of June 1982, I found (evidence) (no evidence) of the corner of Section 1, T. 16 N., R. 1 W. Fourth Principal Meridian, and I re-established said corner according to the Wisconsin Statutes as shown and described hereon.

Dated this 28 day of June 1982.

Lawrence A. Feddersen

Registered Land Surveyor Title

History of corner establishment since Original Government Survey

In 1961 Harley A. Sime was at this corner and found an iron pipe at a 2-way fence corner.

Description of corner evidence found:

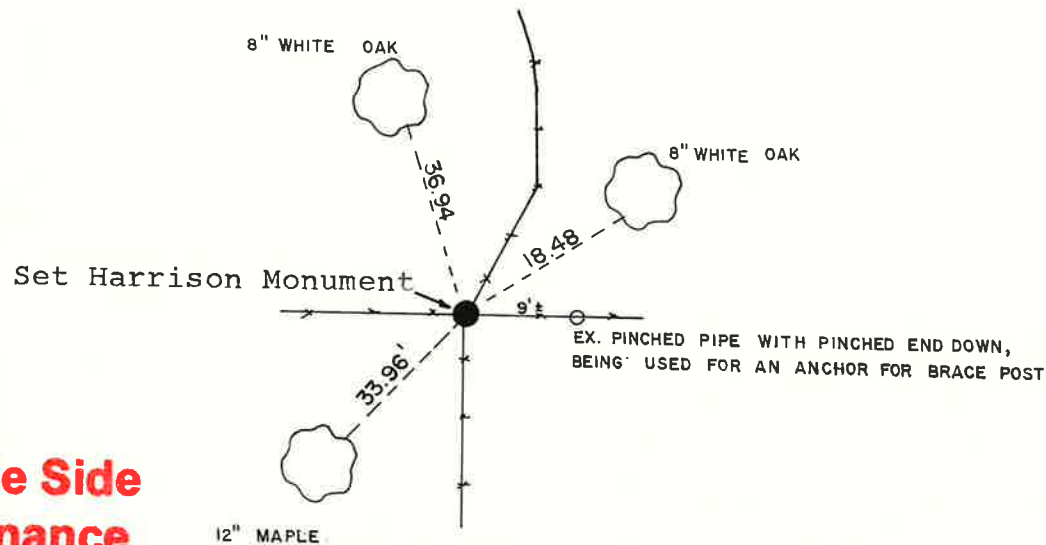
We found a pinched iron pipe, with the pinched end down, 9 feet + East of the fence corner. The pipe appears to have been dug out when a new corner post was put in and is now being used as an anchor for the brace post. This corner is now a 4-way fence corner. We also found older wire down or in old trees, running North-South, both East and West of the now standing fences indicating that this has been the occupied corner for quite some time. Therefore, accepted the fence corner as the corner as it also fits conditions to the North well.

Description of corner and witness monuments, references and accessories used to perpetuate the original or re-established location of this corner:

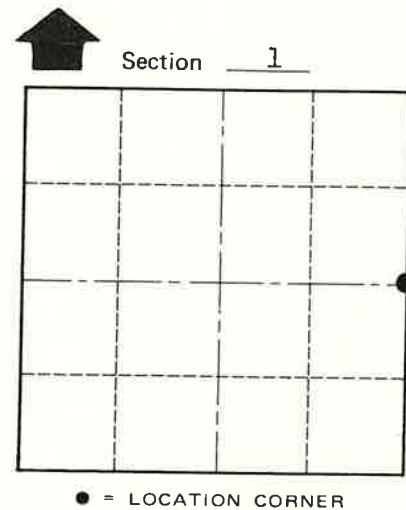
Witnesses to corner location:

Gary Dechant

Thomas Mangene



See Reverse Side For Maintenance



T. 16 N. R. 1 W.

WISCONSIN

(All trees double blazed, scribed, and with N&C's in side of tree, distances to N&C's)

SURVEY CONTROL ORDER

Table with 2 rows: Horizontal, Vertical

WISCONSIN COORDINATE SYSTEM

Table with 5 columns: Corner, East (X), North (Y), Elevation (Z), Zone

City, Village or Town Wilton

County of Monroe

COUNTY SURVEYOR FORM NO. 1