



Feb 29th, 2024

Field trip Location: Junction Cty I and Delaware Ave – 11:00 a.m -12:00 p.m.

Tour leaders: **Clint Gilman**

Annual Meeting Location: Cataract Sports Club 1:00-4:00pm

Agenda:

Order of Business

- Introductions/New Faces - **Gilman**
- Agenda Additions
- Outreach Media - **Weedman**
- Previous meeting recap – **Armstrong, Lefebvre**
- Annual Report **Gilman, Armstrong**
- Revise 2019 “Lead individuals” list *see end of agenda

Action Updates

- Jackson County CISMA - **Gilman, Ellingson**
- Monroe County Highways: Invasive Plant Monitoring – **Johnston, Langrehr**
- Amur Maple Reduction – **Johnston** +Discussion on writing grant for tools (trailer)
- Amur Maple Committee. **Gilman, Esterline, Moran**
- Monroe County Cost-share Applications for Private Land Invasive Species Management – **Lefebvre**
- Purple Loosestrife **Esterline**
- Play Clean Go signs with Scrushers **Micheel**
- Fort McCoy Updates **Ratsch**
- Callery Pear **Armstrong**
- Sparta Public Library **Gilman**
- Updates from the front line **All**.
- **Field Days** Pineview Campground Date: Cranberry Research Center Date:
- **Invader Persuader** ballots-return to **Gilman**. Trophy at next Year’s Annual Meeting
- **Spring CISMA Meeting** - 10 a.m. to 4 p.m. Wed, May 1 - Schmeckle Reserve in Stevens Point, Wisconsin
- Future Field Day ideas – Target township training

Set future meeting/ Field trip dates

- West Salem Schools Outdoor Education Center with John Sullivan (Sparta)
- Fire-Fly Farm with Andre Paquettev (Cashton)

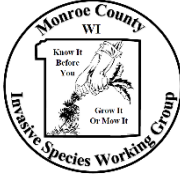
Agenda Items for next meeting

- Adjourn
- Long Branch if interested/ thirsty/hungry



*

- School groups: matching grants, biology students, Earth Club, 4H
- Priority lands: e.g. Tri Creek - **Micheel** will talk to **Chad Ziegler**
- Utilize Challenge Academy from Fort McCoy- **Tim Wilder** will research
- Farmer's market- **Joey Esterline**
- Garden clubs- **Joey Esterline**
- Shooting sports
- Monroe County Fair
- Dairy Breakfast - **Bill Halfman?**
- Conservation Awards Banquet
- Outdoor clubs-**Mickelson/ Micheel**
- Adopt highway programs -**Andre Paquett**
- Libraries - **Skip Frazee**
- Scouts- **Bob Micheel**
- Kiwanis - **Skip Frazee**



THURSDAY FEBRUARY 29th, MCISWG Annual Meeting and Field trip.

11.00 a.m. Meet Clint Gilman for a tour of Buckthorn treated forestland

(Delaware Ave and Cty Hwy I See separate sheet)

1.00 p.m. Annual Meeting: CATARACT SPORTSMEN'S CLUB, 5984 CANNON ROAD. CATARACT

The afternoon session is our Annual MCISWG partner meeting in which we welcome long time as well as new participants to talk about our successes and future plans for addressing the invasive species concerns in Monroe County. We are also inviting Jackson County residents to continue with our discussions on potential collaborations. We plan to wrap up around 3.30p.m. Afterward feel free to congregate at Big Dan's Long Branch Tavern across the road for a celebration of the year. You're welcome to join us in our annual tradition, sitting down to a delicious dinner together.



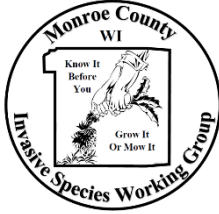
Check out our web page for past meetings, invasive species information and future events.

<https://www.co.monroe.wi.us/departments/land-conservation/invasive-species-workgroup>

Contact Clint Gilman : (608)-387-0782 for more information

Clint.Gilman@wisconsin.gov

facebook: Monroe County Invasive Species Working Group

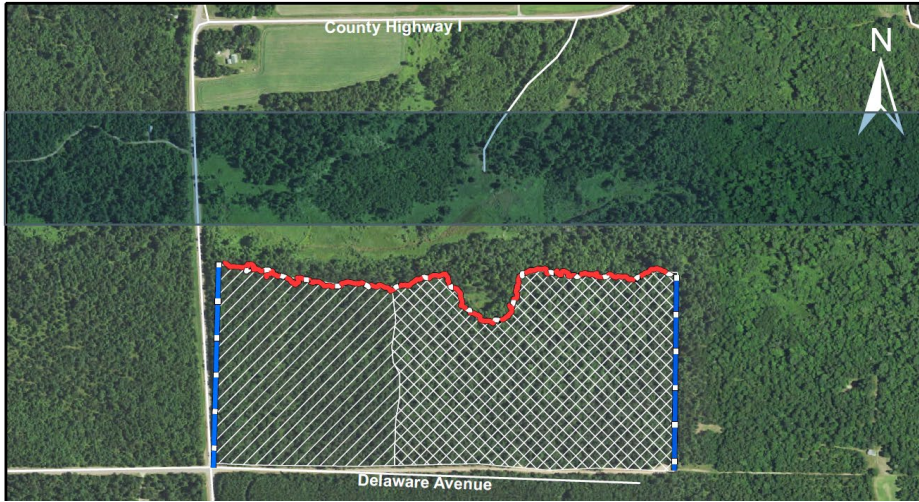


THURSDAY FEBRUARY 29th MCISWG Annual Meeting and Field trip.

11.00 a.m. Meet Clint Gilman for a tour of Buckthorn treated forestland



Big Creek Fishery Area
T18N R03W S05
Monroe County, WI
70 Acres



	Legend	*Harvest by logging operation during contract dates possible.
	<ul style="list-style-type: none"> Unit 1 - Mature woods. Treat all buckthorn within boundary.* Unit 2 - Recent clearcut. Treat all buckthorn within boundary. Roads Stand Boundary Trails Private Boundary 	

This map is not a survey of the actual boundary of any property the map depicts

Meet at the junction of Cty I and Delaware. We will make sure there is parking and a safe turnaround, hopefully on the gravel road. (weather dependent!)

DNR led Crews have been treating buckthorn and resprouts on this parcel, we will walk towards the north side and get a glimpse of the Soper Creek, a pristine trout stream. After the walk, make your way to Cataract, either bring your own lunch or buy one at the Cataract Store- they have excellent pizza by the slice and other lunch items. We will have the Sportsmen’s club open for you around noon to use the facilities, fill your water bottles and socialize with MCISWG members, before our Annual Meeting at 1.p.m

Contact Clint Gilman : (608)-387-0782

Clint.Gilman@wisconsin.gov