

U. S. Public Land Corner Maintenance

118 B

Corner: C1/4 Sec. 35, T16N-R1E

41601352020

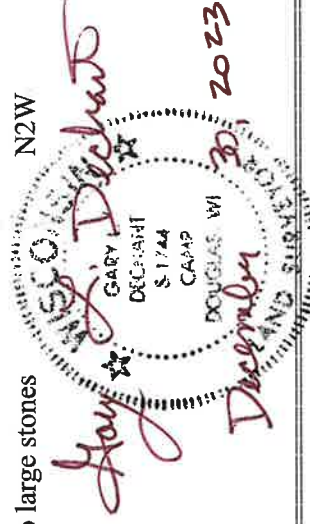
<u>Date</u>	<u>Crew</u>	<u>Monument type</u>
December 26, 2023	Zachariah P. Dechant Gary L. Dechant	Found 3/4" witness monument, actual corner falls 3' south on 24" Red Oak, 21' east of old town road bed

	<u>Bearing</u>	<u>Distance</u>
1) Set 5/8"x24" round rebar, 5' SW of double White Oak 25" at base (1981 BT)	N39E	35.21'
2) Set 5/8"x24" round rebar, NW side of 3'x3' flat stone	S36E	24.96'
3) Set 5/8"x24" round rebar, SE side of 2.5'x2.5' stone	N57W	54.30'
4) Set 5/8"x24" round rebar, between south side of two large stones	N2W	14.86'

Compass bearings

Trees double blazed

Reference markers measured from witness monument



I, Harley A. Sime, do hereby certify that on the 30th day of July 19 81, I found (evidence) ~~(no evidence)~~ of the C¹/₄ corner of Section 35, T 16 N, R 1 E Fourth Principal Meridian, and I re-established said corner according to the Wisconsin Statutes as shown and described hereon.

Dated this 5th day of August 19 81.

Harley A. Sime, R.L.S. 355

County Surveyor

Title

History of corner establishment since Original Government Survey

None on record.

See Reverse Side For Maintenance

Description of corner evidence found:

After surveying out the Section, found the occupied C¹/₄ corner to fit exceptionally well. Also according to Mr. Duane Thorson, landowner and farmer, he says his father lived to be 97 and that he remembers his father, Mr. Duane Thorson's Grandfather, talking about planting an Oak tree at the C¹/₄ corner of Section 35. We found a 24" Red Oak as the occupied corner with wire growing through it and around it, thus accepting it as the corner. Judging by the field evidence in the section, it would appear that this corner was set in an irregular fashion by an unknown surveyor in an unrecorded survey.

Description of corner and witness monuments, references and accessories used to perpetuate the original or re-established location of this corner:

Witnesses to corner location:

G. Dechant

C. Pietz

B. Meyer

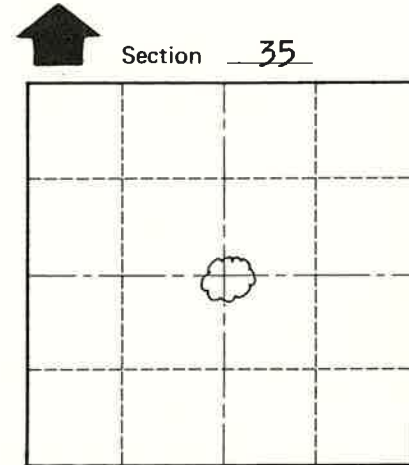
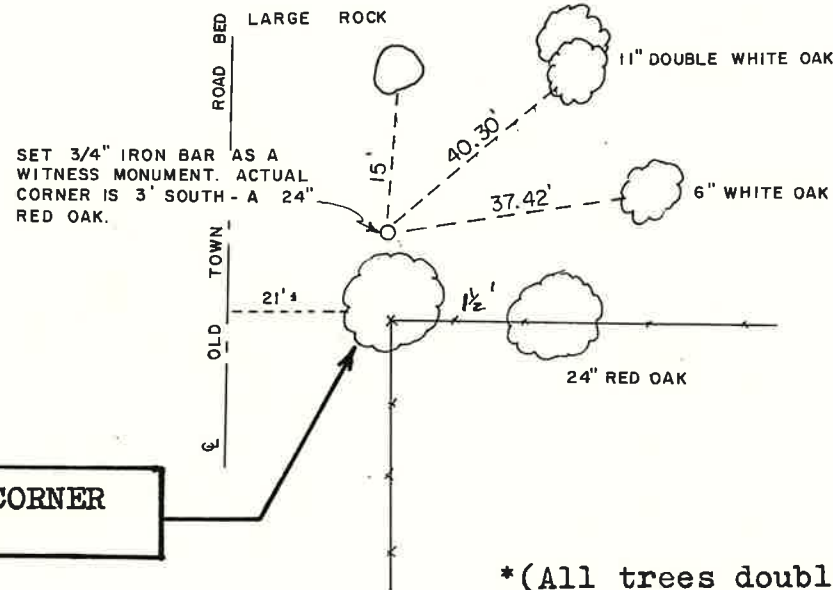
COUNTY SURVEYOR FORM NO. 1

**Approved: HARLEY A. SIME
MONROE CO. SURVEYOR**

SURVEY CONTROL ORDER

Horizontal	_____
Vertical	_____

**ACTUAL LIVING CORNER
24" RED OAK**



T 16 N R 1E
WISCONSIN

(All trees double blazed with nails set)

WISCONSIN COORDINATE SYSTEM

Corner	East (X)	North (Y)	Elevation (Z)	Zone
Control Sta. Name				

City, Village or Town Clifton
County of Monroe