

U. S. Public Land Corner Maintenance

124

Corner: S1/4 Sec. 35, T16N-R1E

41601350020

Date	Crew	Monument type										
December 27, 2023	Zachariah P. Dechant Gary L. Dechant	Found Harrison, top broke off, down 10", 5' south of centerline of Lumber Road, on line with fence to the north										
1) Set 5/8"x24" round rebar, down 12" in field		<table border="1"><thead><tr><th>Bearing</th><th>Distance</th></tr></thead><tbody><tr><td>N32E</td><td>54.00'</td></tr><tr><td>S27E</td><td>65.40'</td></tr><tr><td>S32W</td><td>62.34'</td></tr><tr><td>N27W</td><td>47.08'</td></tr></tbody></table>	Bearing	Distance	N32E	54.00'	S27E	65.40'	S32W	62.34'	N27W	47.08'
Bearing	Distance											
N32E	54.00'											
S27E	65.40'											
S32W	62.34'											
N27W	47.08'											

- 2) Set 5/8"x24" round rebar, 8' NW of 12"-16" double Red Oak
- 3) Set 5/8"x24" round rebar, 5' NE of 8" Black Cherry 20' east of trail
- 4) Set 5/8"x24" round rebar, down 12" in pasture

Compass bearings
Trees double blazed
Harrison and reference markers set on straight lines



I, Harley A. Sime, do hereby certify that on the 30th day of July 19 81, I found (evidence) (~~no evidence~~) of the S¹/₄ corner of Section 35, T. 16 N, R. 1 E Fourth Principal Meridian, and I re-established said corner according to the Wisconsin Statutes as shown and described hereon.

Dated this 5th day of August 19 81.

Harley A. Sime, R.L.S. 355

County Surveyor
Title

History of corner establishment since Original Government Survey

No known recorded history since the original government survey.

Description of corner evidence found:

Set on line between the SW and SE corners of Section 35 and on line with the existing fence to the North.

See Reverse Side For Maintenance

COUNTY SURVEYOR FORM NO. 1

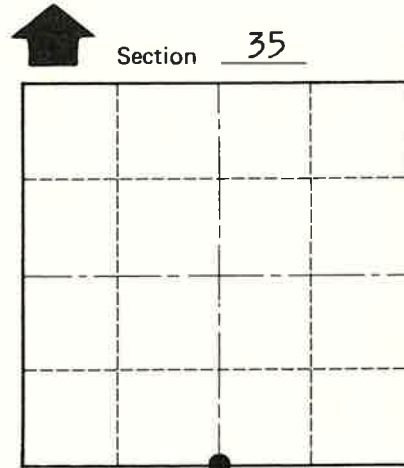
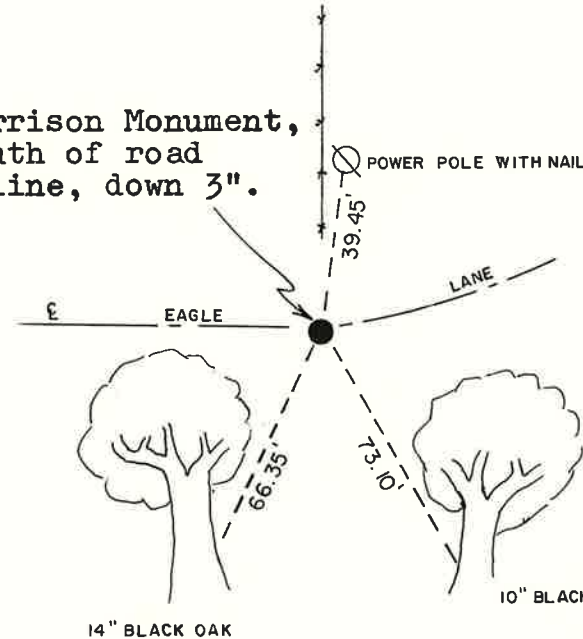
Description of corner and witness monuments, references and accessories used to perpetuate the original or re-established location of this corner:

Witnesses to corner location:

G. Dechant
C. Pietz
B. Meyer



Set Harrison Monument, 4'± south of road centerline, down 3".



• = LOCATION CORNER

T. 16 N R. 1 E

WISCONSIN

Approved: **HARLEY A. SIME**
MONROE CO. SURVEYOR

SURVEY CONTROL ORDER

Horizontal	_____
Vertical	_____

WISCONSIN COORDINATE SYSTEM

Corner	East (X)	North (Y)	Elevation (Z)	Zone
Control Sta. Name				

(All trees double blazed with nails set)

City, Village or Town Clifton
County of Monroe