

U. S. Public Land Corner Maintenance

78

Corner: W1/4 Sec. 23, T16N-R1E

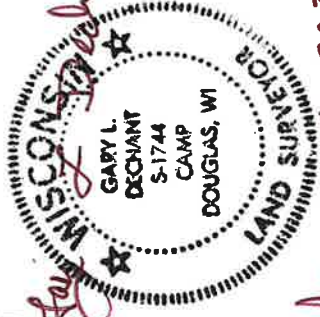
41601222000

Date	Crew	Monument type
January 3, 2024	Zachariah P. Dechant Gary L. Dechant	Found Harrison intact, at remains of fence corner, sign 1/2' west 48' west of dry run, heavily logged, thick brush

- 1) Set 1"x24" iron pipe 4' south of 12" Black Cherry
- 2) Set 1"x24" iron pipe 6' south of two dead white oaks with barb wire
- 3) Set 1"x24" iron pipe
- 4) Set 1"x24" iron pipe

Bearing	Distance
North	20.48'
S76E	29.30'
S11W	20.81'
N70W	18.78'

Compass bearings
Trees double blazed
Set stone over pipes



January 6, 2024

I, Harley A. Sime, do hereby certify that on the 11 day of August 19 76, I found (evidence) (~~no evidence~~) of the W 1/4 corner of Section 23, T16 N, R 1 E, Fourth Principal Meridian, and I re-established said corner according to the Wisconsin Statutes as shown and described hereon.

Dated this 7 day of September '77.

History of original corner establishment:

Description of corner evidence found:

Accepted existing occupied fence corner as the best available evidence. Fits the section very well.

County Surveyor

Title

**Approved: HARLEY A. SIME
MONROE CO. SURVEYOR**

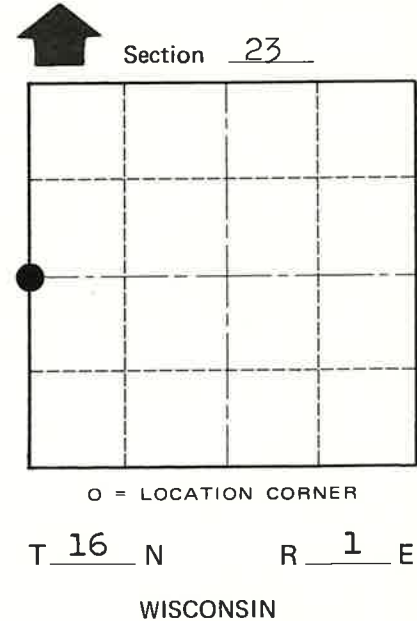
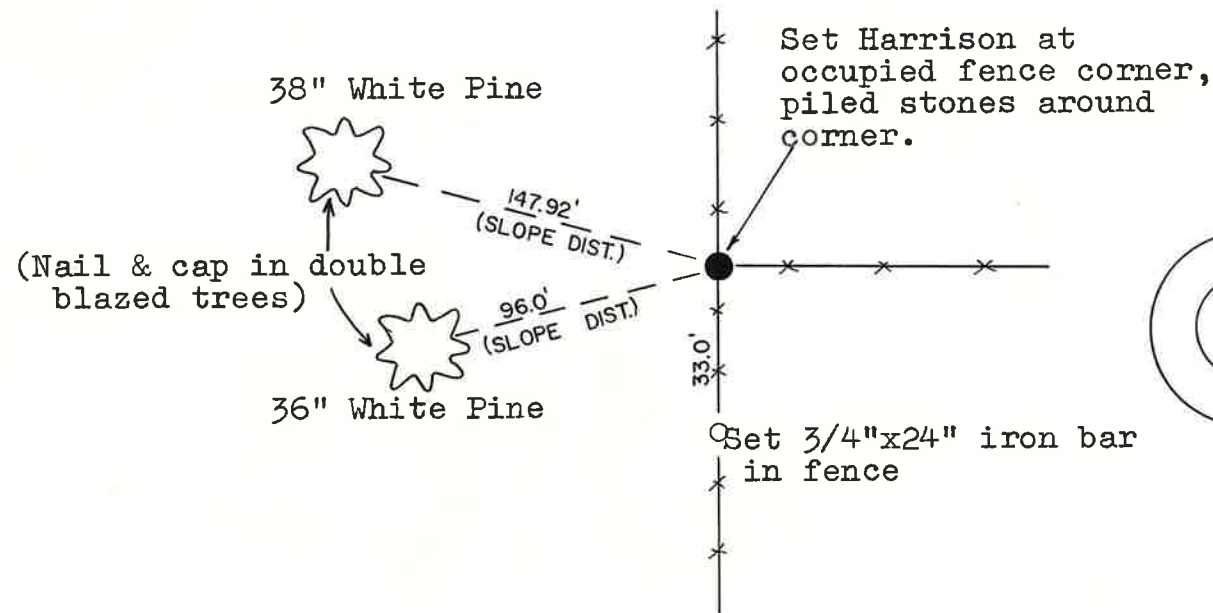
**See Reverse Side
For Maintenance**

Description of corner and witness monuments, references and accessories used to perpetuate the original or re-established location of this corner:

Witnesses to corner location:

W. Jung - Crew Chief

G. Dechant



COUNTY SURVEYOR FORM NO. 1

SURVEY CONTROL ORDER

Horizontal	_____
Vertical	_____

WISCONSIN COORDINATE SYSTEM

Corner	East (X)	North (Y)	Elevation (Z)	Zone
Control Sta. Name				

City, Village or Town Clifton
County of Monroe

O.K.