

# U. S. Public Land Corner Maintenance

# 59

Corner: E1/4 Sec. 14, T16N-R1E

41601142000

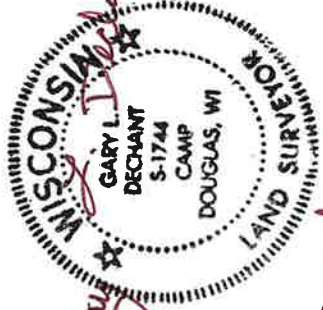
<u>Date</u>	<u>Crew</u>	<u>Monument type</u>
December 1, 2023	Zachariah P. Dechant Gary L. Dechant	Found Harrison and sign 1.5' north

### References:

- 1) Set 5/8"x 24" round rebar, 6' SW of 20" White Pine
- 2) Set 5/8"x24" round rebar, 4' SW of 14" White Pine
- 3) Set 5/8"x 5' round rebar
- 4) Set 5/8"x 5' round rebar, 4' NE of 6" Red Oak

Compass bearings  
Trees double blazed

<u>Bearing</u>	<u>Distance</u>
N14E	32.02'
N70E	17.46'
S50E	20.20'
S10W	22.84'



December 1, 2023

CERTIFICATE

CERTIFIED LAND CORNER

41601142000

No. 59

I, William C. Jung, do hereby certify that on the 29th day of March 1978, I found (evidence) (~~no evidence~~) of the E<sup>1</sup>/<sub>4</sub> corner of Section 14, T 16 N, R 1 E, Fourth Principal Meridian, and I re-established said corner according to the Wisconsin Statutes as shown and described hereon.

History of original corner establishment:

No known recorded history since the original government survey.

Description of corner evidence found:

**Set the corner on line and equidistant between the section corners.**

Dated this 22nd day of Nov. 1978.

William C. Jung, R.L.S. 1323

County Surveyor's Office

**See Reverse Side For Maintenance**

COUNTY SURVEYOR FORM NO. 1

Description of corner and witness monuments, references and accessories used to perpetuate the original or re-established location of this corner:

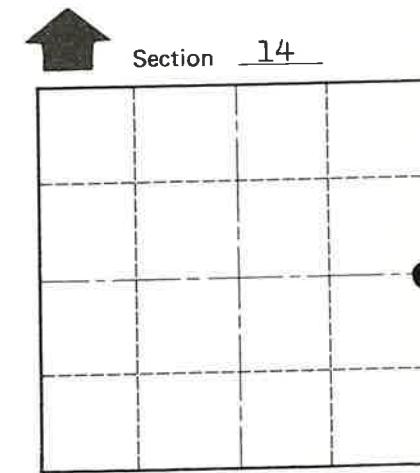
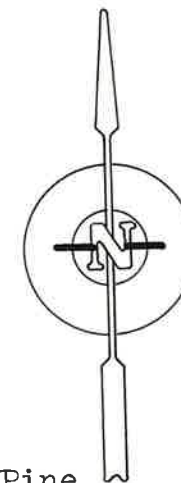
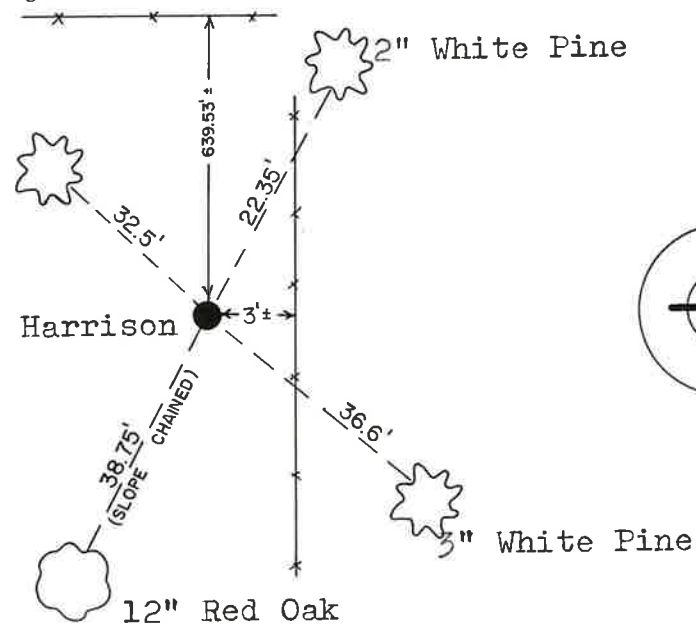
Witnesses to corner location:

C. Pietz

G. Dechant



6" Norway Pine



O = LOCATION CORNER

T 16 N R 1 E  
WISCONSIN

Approved by: Harley A. Sime  
County Surveyor

SURVEY CONTROL ORDER

Horizontal \_\_\_\_\_  
Vertical \_\_\_\_\_

WISCONSIN COORDINATE SYSTEM

Corner	East (X)	North (Y)	Elevation (Z)	Zone
Control Sta. Name				

City, Village or Town Clifton  
County of Monroe