

U. S. Public Land Corner Maintenance

#45

Corner: SE Sec. 10, T16N-R1E

41601100000

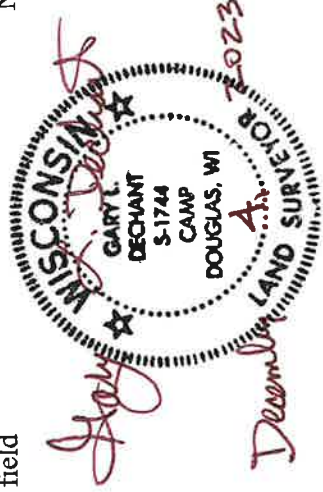
<u>Date</u>	<u>Crew</u>	<u>Monument type</u>
December 4, 2023	Zachariah P. Dechant Gary L. Dechant	Found Harrison in field, down 12", steel post on east side

References:

- 1) Set 5/8"x 24" round rebar, down 12" in field road
- 2) Set 5/8"x24" round rebar, down 12" in field road
- 3) Set 5/8"x 5' round rebar, down 12" in field
- 4) Set 5/8"x 5' round rebar, down 12" in field

<u>Bearing</u>	<u>Distance</u>
N28E	21.88'
S38E	19.46'
S47W	22.40'
N67W	22.20'

Compass bearings



I, William C. Jung, do hereby certify that on the seventeenth day of June 1980, I found (evidence) ~~the evidence~~ of the southeast corner of section 10, T 16 N, R 1 E Fourth Principal Meridian, and I re-established said corner according to the Wisconsin Statutes as shown and described hereon.

Dated this 23rd day of Feb. 1981.

William C. Jung

William C. Jung - R.L.S. 1323
Title

History of corner establishment since Original Government Survey

Duane Marten set a Harrison marker at this corner in June of 1972. Gary Sime used this corner in a July 1976 survey and in a May, 1977 survey.

Description of corner evidence found:

Found Harrison marker in field.

Approved: **HARLEY A. SIME**
MONROE CO. SURVEYOR

See Reverse Side For Maintenance

COUNTY SURVEYOR FORM NO. 1

Description of corner and witness monuments, references and accessories used to perpetuate the original or re-established location of this corner:

Witnesses to corner location:

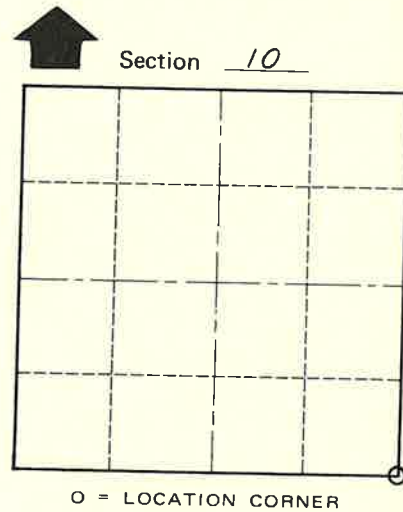
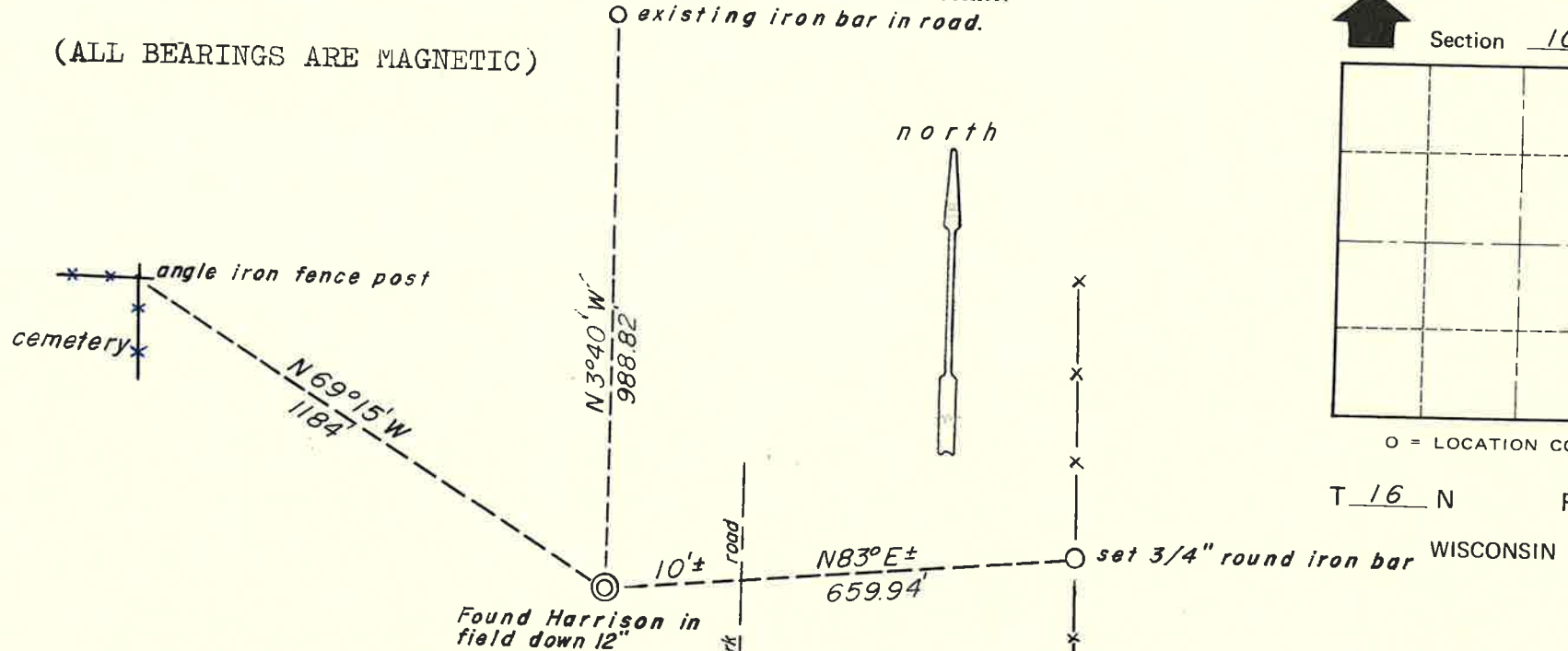
W. Jung

G. Dechant

T. Tormoen



(ALL BEARINGS ARE MAGNETIC)



SURVEY CONTROL ORDER

Table with 2 rows: Horizontal, Vertical.

Table with 5 columns: Corner, East (X), North (Y), Elevation (Z), Zone.

City/Village of Town of Clifton
County of Monroe
Wisconsin