

U. S. Public Land Corner Maintenance

29

Corner: NW Sec. 9, T16N-R1E

41601050000

<u>Date</u>	<u>Crew</u>	<u>Monument type</u>
December 21, 2023	Zachariah P. Dechant Gary L. Dechant	Found <u>stone</u> of record with leaning Harrison, up 10", 1.5' south of stone. THE STONE is the corner. 2' west & 7' N. of present fence corner. Sign on south side of stone. Verified by the two 1980 bearing trees.

References:

- 1) Set 5/8"x24" round rebar, 4' SW of 5" Maple
- 2) Set 5/8"x24" round rebar, 4' NW of 10" Hickory
- 3) Set 5/8"x24" round rebar
- 4) Set 5/8"x24" round rebar, 4' SE of 6" Maple

Compass bearings
Trees double blazed
Set stone over rebars

<u>Bearing</u>	<u>Distance</u>
N52E	19.09'
S49E	17.91'
S44W	21.70'
N30W	25.56'



I, Harley A. Sime 19th, do hereby certify that on the 19th day of September 1980, I found (evidence) (~~was~~) of the Northwest corner of Section 9, T 16 N, R 1 E Fourth Principal Meridian, and I re-established said corner according to the Wisconsin Statutes as shown and described hereon.

History of corner establishment since Original Government Survey

Hamilton LaRue was at this corner in May of 1897. Ray Hurlburt found a stone at this corner in December of 1940.

Description of corner evidence found:

Found unmarked field stone 1" under surface. The stone is the corner, and all ties are to the stone. The Harrison is a witness monument.

Dated this 19th day of Sept. 1980.

Approved: HARLEY A. SIME
MONROE CO. SURVEYOR
Title

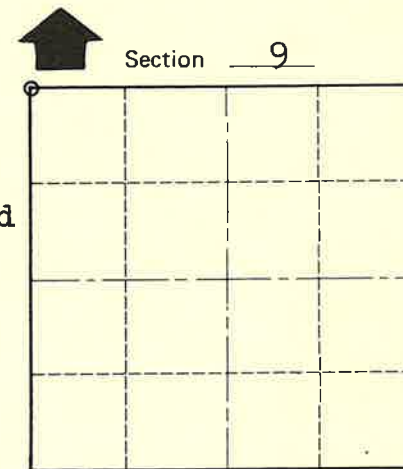
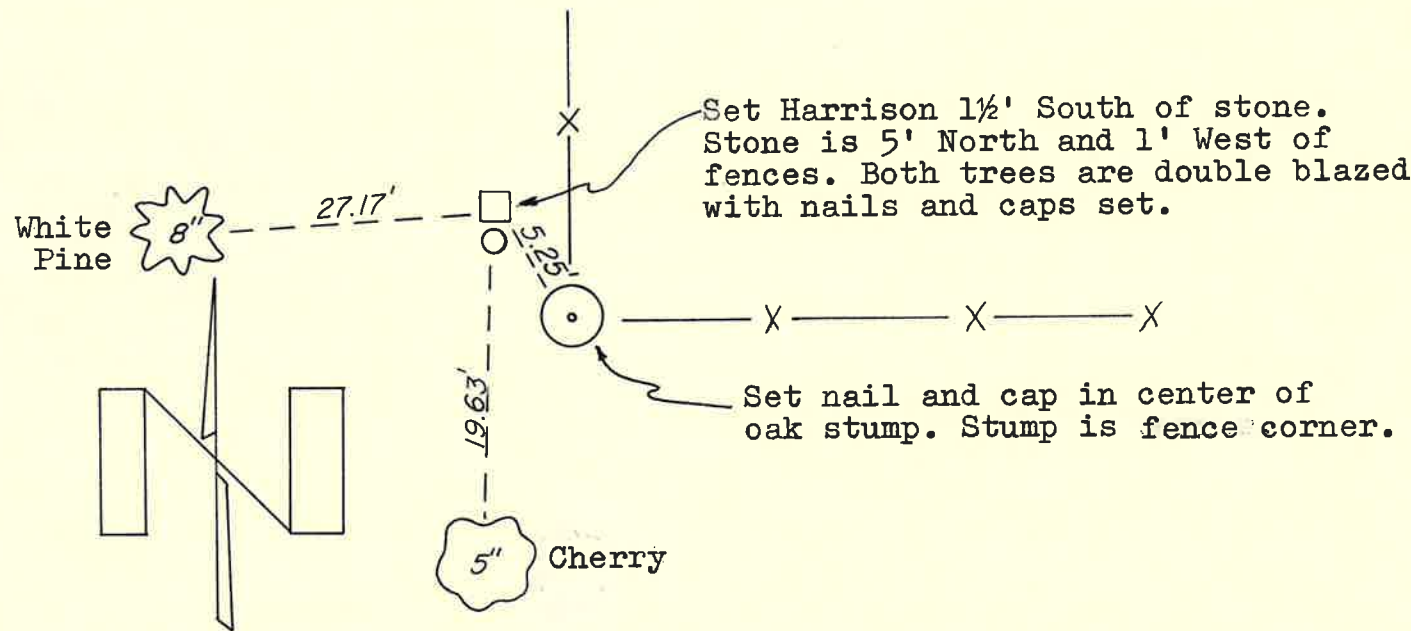
See Reverse Side For Maintenance

COUNTY SURVEYOR FORM NO. 1

Description of corner and witness monuments, references and accessories used to perpetuate the original or re-established location of this corner:

Witnesses to corner location:

Bryan Meyer
Chuck Dade



O = LOCATION CORNER

T 16 N R 1 E
WISCONSIN

SURVEY CONTROL ORDER

Horizontal	_____
Vertical	_____

WISCONSIN COORDINATE SYSTEM

Corner	East (X)	North (Y)	Elevation (Z)	Zone
Control Sta. Name				

~~City, Village or~~ Town of Clifton
County of Monroe
Wisconsin