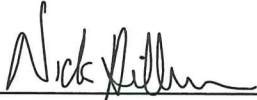


CERTIFICATE

I, Nicholas M. Hillmer, do hereby certify that this document and the data contained herein was prepared by me or under my direct supervision and that I am a duly Licensed Land Surveyor under the laws of the State of Wisconsin.

Dated this 23rd day of May, 2013



Nicholas M. Hillmer, P.L.S. 2909
Anderson Engineering of Minnesota, LLC.

CERTIFIED LAND CORNER

History of corner established since Original Government Survey

Fred Holden was here in January of 1901. In August of 1988 Gary Dechant set a Harrison monument half way between section corners and in an east-west fence line.

Description of evidence found

On February 21st, 2013, Anderson Engineering of Minnesota located the Harrison monument sticking up 0.4 foot in between two fences.

No. 21802260020



Description of corner and witness monuments, references and accessories used to perpetuate the original or re-established location of this corner:

Witnesses to corner location:

Nick Hillmer
Josh Oslund
Dan Greenwald

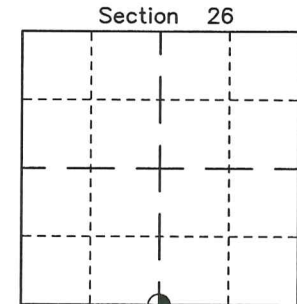
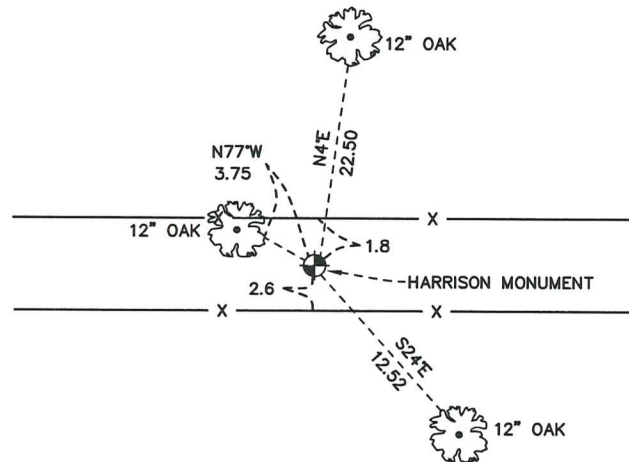


MONROE COUNTY
COORDINATE SYSTEM
NAD 1983 (2007)

HARRISON MONUMENT
Northing (Y) 400172.88
Easting (X) 686444.50

Base Station - 22 182W
Northing (Y) 408053.25
Easting (X) 679287.00

All distances are shown in U.S. Survey Feet.
Ties are to 60D nails set in trees.
Bearings are for tie reference purposes only.
Coordinates were derived from RTK GNSS procedures.



● = LOCATION CORNER
Corner I.D. S 1/4 26
T 18 N R 2 W
Town of Greenfield
Monroe County, WI.

21802260020

I, Gary L. Dechant, do hereby certify that on the 1st day of August 19 88, I found (evidence) ~~xxxxxxx~~ of the N 1/4 corner of Section 35, T 18 N, R 2 W Fourth Principal Meridian, and I re-established said corner according to the Wisconsin Statutes as shown and described hereon.

History of corner establishment since Original Government Survey
Fred Holden was here in Jan. of 1901.

Dated this 3rd day of Aug. 19 88.

Gary L. Dechant

Reg. Land Surveyor, S-1744
Title

Description of corner evidence found:

Set half way between section corners and in East-West fence line.

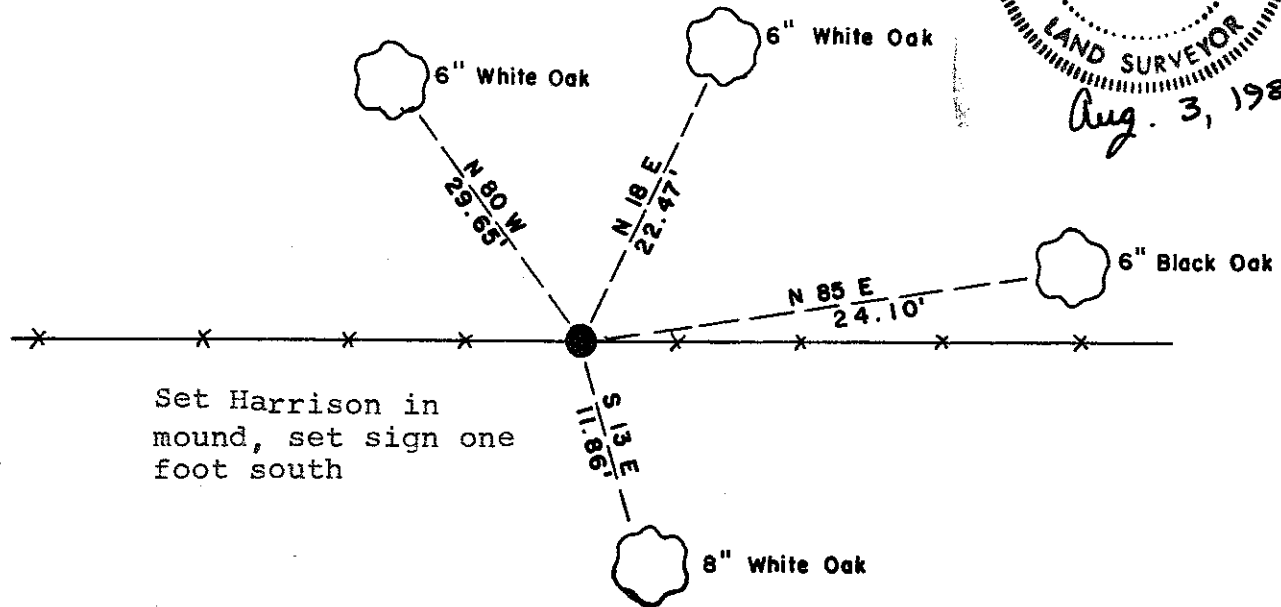
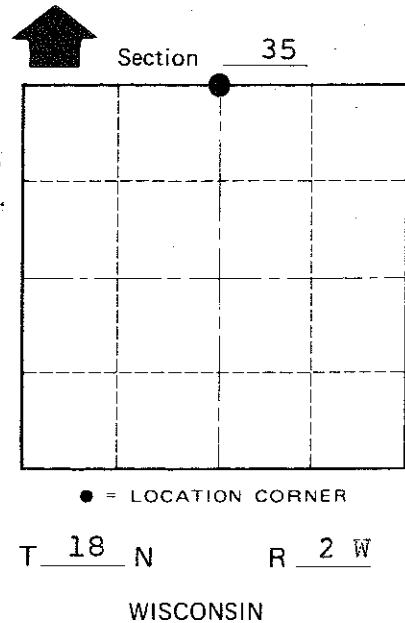
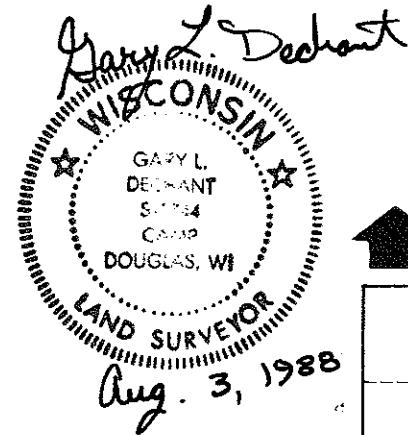
Description of corner and witness monuments, references and accessories used to perpetuate the original or re-established location of this corner:

HOT!! 105° F.

Witnesses to corner location:

Timothy S. Frederick

Gary L. Dechant



Set Harrison in mound, set sign one foot south

(Trees double blazed with N&C's set)

COUNTY SURVEYOR FORM NO. 1

SURVEY CONTROL ORDER

Horizontal _____
Vertical _____

WISCONSIN COORDINATE SYSTEM

Corner	East (X)	North (Y)	Elevation (Z)	Zone
Control Sta. Name				

City, Village or Town Greenfield
County of Monroe