

U.S. PUBLIC LAND CORNER MAINTENANCE

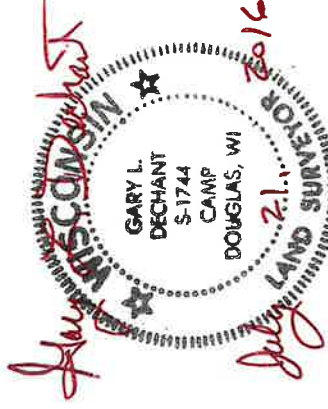
99

**Corner ID : E1/4 Sec. 26, T18N-R2W
21802262000**

DATE	CREW	MONUMENT TYPE
June 29, 2016	Zachariah P. Dechant Gary L. Dechant	Existing 1/4" round iron bar old Railroad bed Approx. 140' east of abandoned Railroad tunnel.

References:

1) Set 3/4"x24" round iron bar, down 6"	Bearing	Distance
2) Set 3/4"x24" round iron bar, down 6", on top of sluff from slope	N80E	31.35'
3) Set 3/4"x24" round iron bar, down 6" in old railroad bed	S59E	26.98"
4) Set 3/4"x24" round iron bar, down 6"	N83W	33.09
	N18W	16.35"



U. S. Public Land Corner Maintenance

99

Corner: W1/4 Sec. 25, T18N-R2W

21802262000

Date	Crew	Monument type
December 14, 2023	Zachariah P. Dechant Gary L. Dechant	Corner and all reference markers destroyed or buried deep from removal of railroad tracks and/or erosion of steep limestone walls. Reset corner from previous survey points. Set cast iron TCP monument, placed limestones around monument, set survey sign 2' east, 135' east of face of 1911 tunnel.

References:

1) Set 5/8"x24" round rebar	Bearing	Distance
2) Set 5/8"x24" round rebar	S82E	25.55'
3) Set 5/8"x24" round rebar	S53E	15.08'
4) Set 5/8"x24" round rebar	N72W	30.30'
	N28W	15.42'

Compass bearings



December 18, 2023

I, Gary L. Dechant, do hereby certify that on the 12th day of April 1988, I found ~~(evidence)~~ (no evidence) of the W¹/₄ corner of Section 25, T 18 N, R 2 W Fourth Principal Meridian, and I re-established said corner according to the Wisconsin Statutes as shown and described hereon.

Dated this 13th day of April 1988.

Gary L. Dechant

Reg. Land Surveyor, S-1744
Title

History of corner establishment since Original Government Survey

Bill Jung has a computed location for this corner shown on his Section 26 summary surveyed in 1974.

Description of corner evidence found:

My distance between the NW and SW Section corners differ by 1.58 feet from Bill Jung's. I set the corner on line between Section corners at a prorated distance to Jung's measurements. This corner was also located from existing monuments within the Village of Tunnel City. However it should be noted, that this corner location fits the North line of the Village of Tunnel City in a North South direction, but is about 2 chains farther East as indicated on the Plat of Tunnel City which would make some lots as shown on said Plat non-existent! After reviewing the evidence of Bill Jung's survey and my own I am under the opinion that an error was made in the Village of Tunnel City when platted in 1858.

Description of corner and witness monuments, references and accessories used to perpetuate the original or re-established location of this corner:

Witnesses to corner location:

David E. Madison (D.E.M.)

Gary L. Dechant

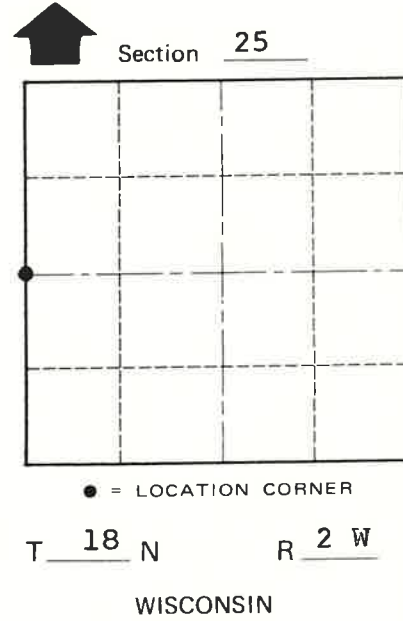
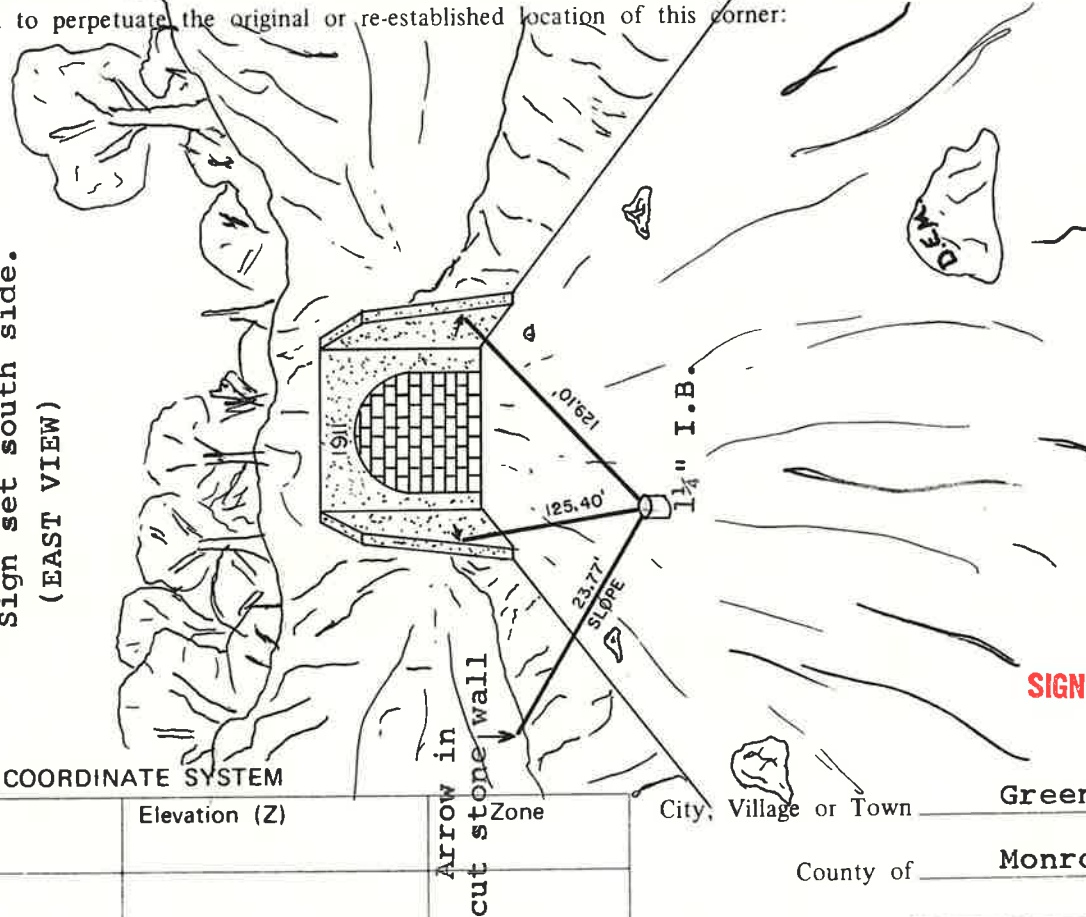
COUNTY SURVEYOR FORM NO. 1

See Reverse Side For Maintenance



Set 1 1/4"x30" round iron bar 4' + South of centerline of abandoned railroad. Distances from corner to tip of arrows. Sign set south side.

(EAST VIEW)



SIGN PLACED 8-27-92

WISCONSIN COORDINATE SYSTEM

Corner	East (X)	North (Y)	Elevation (Z)	Zone
Control Sta. Name				

City, Village or Town Greenfield
County of Monroe