

# U. S. Public Land Corner Maintenance

# 93

Corner: NW Sec. 30, T18N-R1W

21802240000

Date	Crew	Monument type
January 4, 2024	Zachariah P. Dechant Gary L. Dechant	Found Harrison intact, down 8", 16' west of fence 2' east of 12" Black Oak, sign on north side

	Bearing	Distance
1) Set 1"x24" iron pipe, set stone over pipe	North	26.29'
2) Set 1"x24" iron pipe, stone over pipe, 4' west of fence	East	12.38'
3) Set 1"x24" iron pipe, set stone over pipe	South	21.47'
4) Set 1"x24" iron pipe, set stone over pipe	West	24.19'

Compass bearings  
Trees double blazed



I, Harley Sime, do hereby certify that on the \_\_\_\_\_ day of \_\_\_\_\_ 19 74, I found ~~(evidence)~~ (no evidence) of the NW corner of Section 30, T 18 N, R 1 W, Fourth Principal Meridian, and I re-established said corner according to the Wisconsin Statutes as shown and described hereon.

Dated this 13 day of March 19 75

Harley Sime  
COUNTY SURVEYOR  
Title

History of original corner establishment:

In January of 1901, Fred Holden (County Surveyor) resurveyed Section 30 and the records state that he set a stone with a cross at the NW corner of said Section. This area was excavated and the stone was not found, however, in the location of the SW corner a stone not in his records was found. This may indicate a possible mile error North and South on the West line of this section (monument-wise only)

Description of corner evidence found: indicate a possible mile error North and South on the West line of this section (monument-wise only)

This corner was set by prolonging the line between the NE and NW corners and intersecting this line with existing field evidence. The resulting measurements to and from this corner fit original notes pretty well.

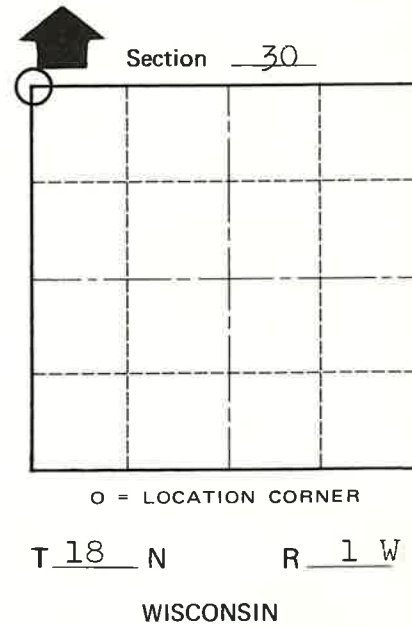
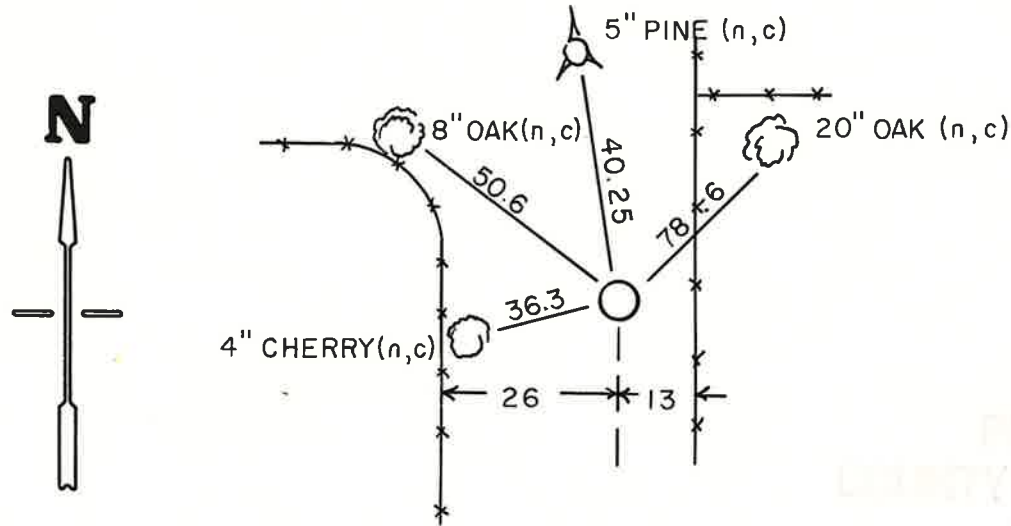
**See Reverse Side For Maintenance**

Description of corner and witness monuments, references and accessories used to perpetuate the original or re-established location of this corner:

Set a standard Harrison monument up 2", with accessories shown below:

Witnesses to corner location:

- SURVEY CREW
- K. Pritzlaff - Survey Crew Chief
- D. Malliet
- B. Jung
- A. Lueck



COUNTY SURVEYOR FORM NO. 1

SURVEY CONTROL ORDER

Horizontal	_____
Vertical	_____

WISCONSIN COORDINATE SYSTEM

Corner	East (X)	North (Y)	Elevation (Z)	Zone
Control Sta. Name				

PLACED  
COUNTY SURVEYOR'S  
SIGN 5-09-87

City, Village or Town La Grange  
County of Monroe