

U.S. PUBLIC LAND SURVEY MONUMENT RECORD

ROMPORTL #21601200000

HISTORY OF CORNER ESTABLISHMENT SINCE THE ORIGINAL GOVERNMENT SURVEY
SEE PREVIOUS TIE SHEET.

DESCRIPTION OF CORNER EVIDENCE FOUND
FOUND HARRISON AS SET BY GARY DECHANT, VERIFIED EXISTING TIES AND TOOK NEW TIES AS SHOWN.

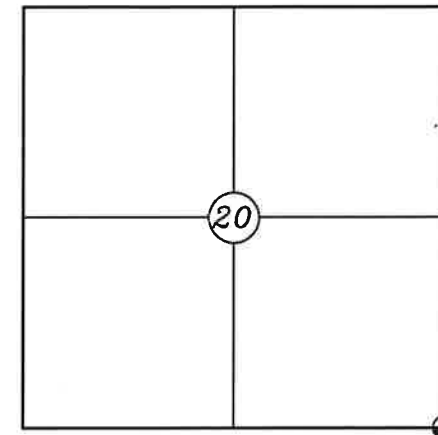
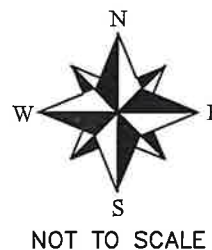
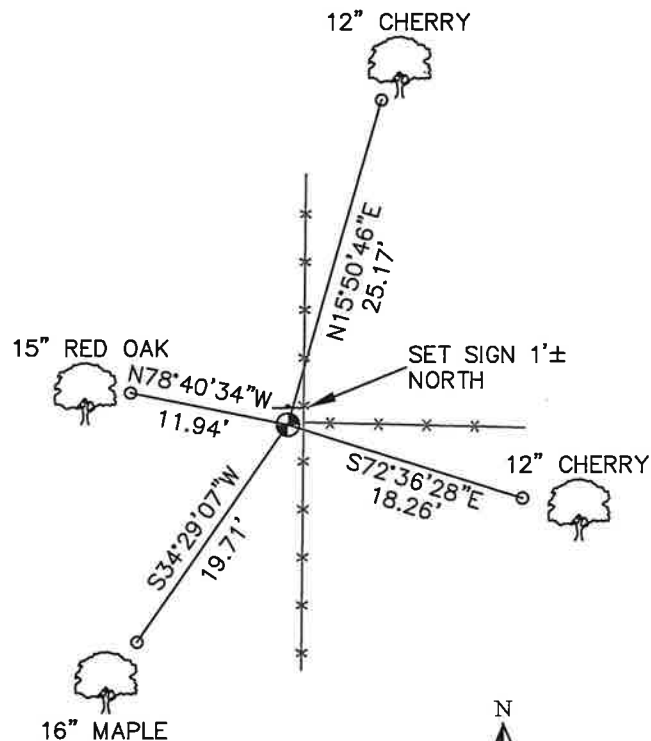
SECTION 20, T16N, R1W,
TOWN OF WILTON
MONROE COUNTY
WISCONSIN.

CREW/WITNESS FOR CORNER LOCATION
-CHRISTIAN J. RUNNING
-LEIGH A. RUNNING

FIELD WORK COMPLETED 10/18/2023

I, CHRISTIAN J. RUNNING RLS 2558, HEREBY CERTIFY THAT THE COORDINATES PROVIDED ON THIS RECORD WERE DETERMINED BY ME OR UNDER MY DIRECT SUPERVISION AND THAT THIS FORM IS CORRECT TO THE BEST OF MY KNOWLEDGE AND BELIEF.

CHRISTIAN J. RUNNING
PLS 2558
RUNNING LAND SURVEYING
700 DAUPHIN ST.
LA CROSSE, WI 54603



● CORNER LOCATION

LEGEND

- FOUND HARRISON
- SET 3/4" X 18" IRON BAR 1.5 LB/FT UNLESS NOTED

ALL BEARINGS ARE REFERENCED TO THE MONROE COUNTY COORDINATE SYSTEM NAD 83(2011)

MONROE COUNTY COORDINATES NAD 83(2011)
NORTHING: 342319.3989
EASTING: 704754.3214

I, Gary L. Dechant, do hereby certify that on the 7th day of December, 1988, I found (evidence) ~~the original~~ XXXXXXX of the SW corner of Sec. 21, T 16 N, R 1 W Fourth Principal Meridian, and I re-established said corner according to the Wisconsin Statutes as shown and described hereon.

Dated this 8th day of Dec., 1988.

Gary L. Dechant

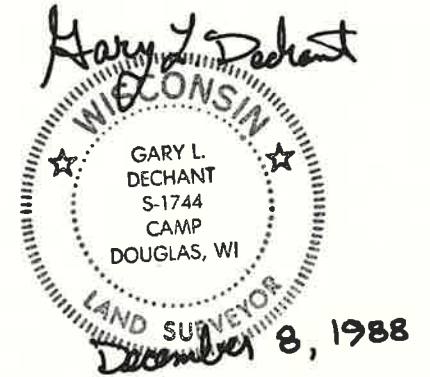
Reg. Land Surveyor, S-1744
Title

History of corner establishment since Original Government Survey

No known history since the original government survey.

Description of corner evidence found:

Accepted fence corner as best available evidence. This fits the Government survey to the SE Corner of Section 21 within 4'+.



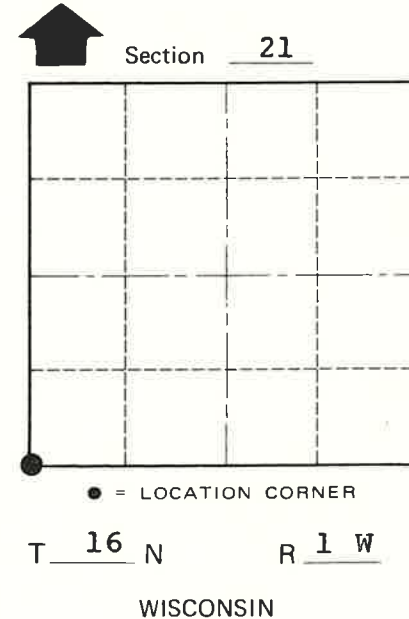
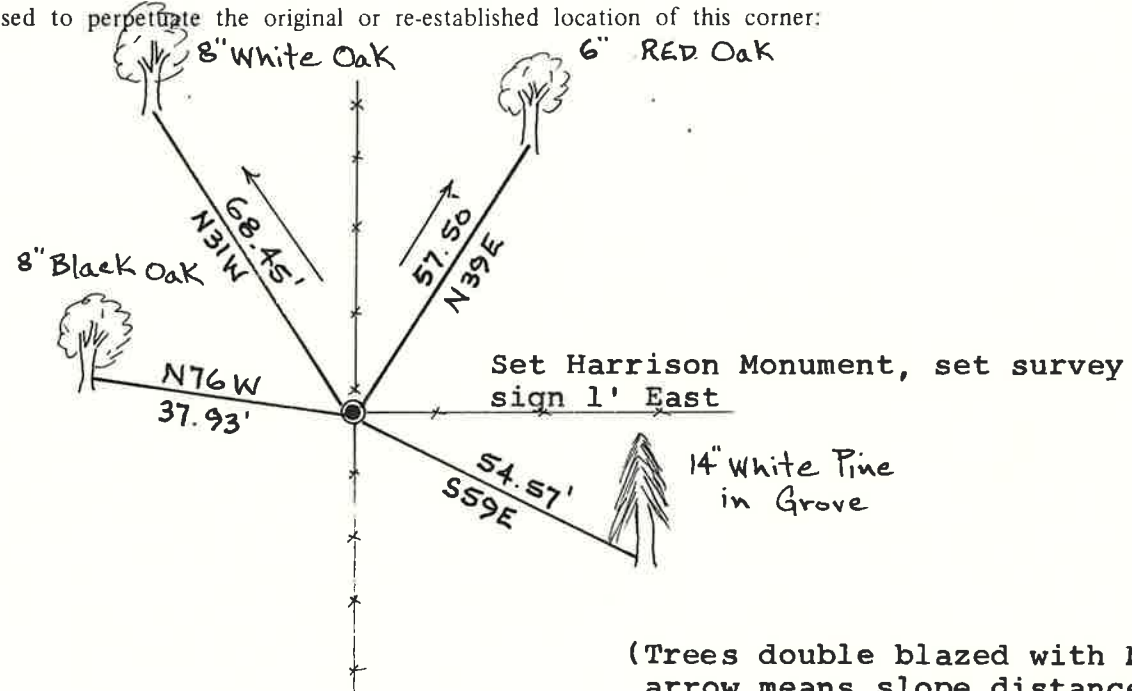
COUNTY SURVEYOR FORM NO. 1

Description of corner and witness monuments, references and accessories used to perpetuate the original or re-established location of this corner:

Witnesses to corner location:

Timothy S. Frederick

Gary L. Dechant



(Trees double blazed with N&C's set, arrow means slope distance.)

SURVEY CONTROL ORDER

Horizontal	_____
Vertical	_____

WISCONSIN COORDINATE SYSTEM

Corner	East (X)	North (Y)	Elevation (Z)	Zone
Control Sta. Name				

City, Village or Town Wilton
County of Monroe