

U.S. PUBLIC LAND SURVEY MONUMENT RECORD

ROMPORTL #41501190000

HISTORY OF CORNER ESTABLISHMENT SINCE THE ORIGINAL GOVERNMENT SURVEY
SEE PREVIOUS TIE SHEET.

DESCRIPTION OF CORNER EVIDENCE FOUND
FOUND AND ACCEPTED HARRISON

CREW/WITNESS FOR CORNER LOCATION
-CHRISTIAN J. RUNNING
-LEIGH A. RUNNING

FIELD WORK COMPLETED 8/02/2023.

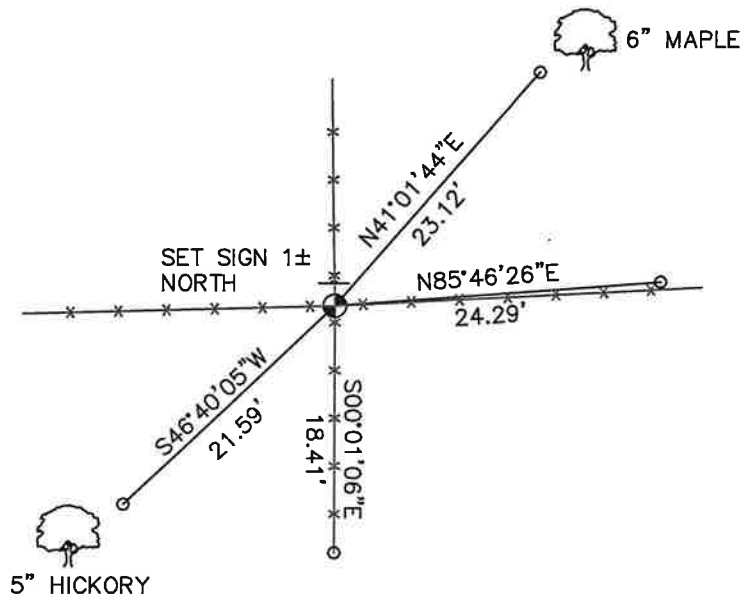
I, CHRISTIAN J. RUNNING RLS 2558, HEREBY CERTIFY THAT THE COORDINATES PROVIDED ON THIS RECORD WERE DETERMINED BY ME OR UNDER MY DIRECT SUPERVISION AND THAT THIS FORM IS CORRECT TO THE BEST OF MY KNOWLEDGE AND BELIEF.

CHRISTIAN J. RUNNING
PLS 2558
RUNNING LAND SURVEYING
700 DAUPHIN ST.
LA CROSSE, WI 54603

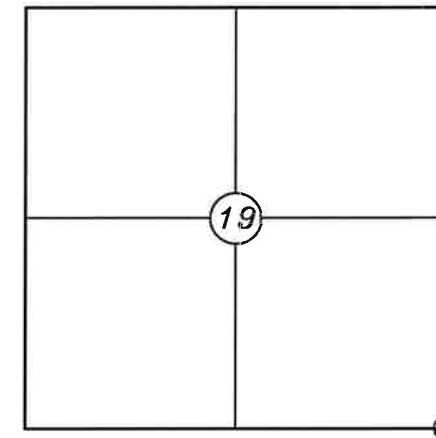


MONROE COUNTY COORDINATES NAD 83(2011)
NORTHING: 310950.8008
EASTING: 731583.7188

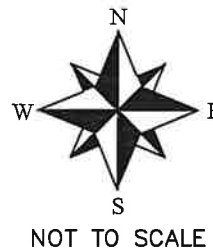
NOTE: ALL TIES ARE SET 3'± FROM FACE OF TREES.



**SECTION 19, T15N, R1E,
TOWN OF GLENDALE
MONROE COUNTY
WISCONSIN.**



⊕ CORNER LOCATION



NOT TO SCALE

LEGEND

- ⊕ FOUND HARRISON
- SET 3/4" X 18" IRON BAR 1.5 LB/FT UNLESS NOTED

ALL BEARINGS ARE REFERENCED TO THE MONROE COUNTY COORDINATE SYSTEM NAD 83(2011)

41501190000

I, William C. Jung, do hereby certify that on the 27th day of September 1982, I found (evidence) ~~(no evidence)~~ of the Northeast corner of Section 30, T 15 N, R 1 E Fourth Principal Meridian, and I re-established said corner according to the Wisconsin Statutes as shown and described hereon.

History of corner establishment since Original Government Survey

O. R. Dahl was at this corner in December of 1868. In May of 1904 Holden found and used Dahl's corner.

Description of corner evidence found:

I accepted the existing 4-way occupied fence corner as the best available evidence of the original government corner.

Dated this 28th day of Jan. 1983.

William C. Jung

Deputy County Surveyor
Title

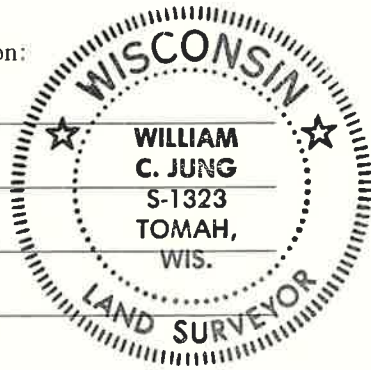
COUNTY SURVEYOR FORM NO. 1

Description of corner and witness monuments, references and accessories used to perpetuate the original or re-established location of this corner:

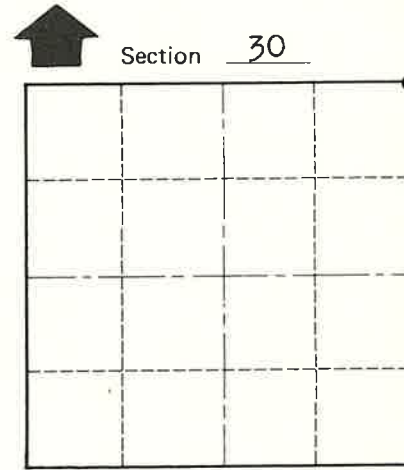
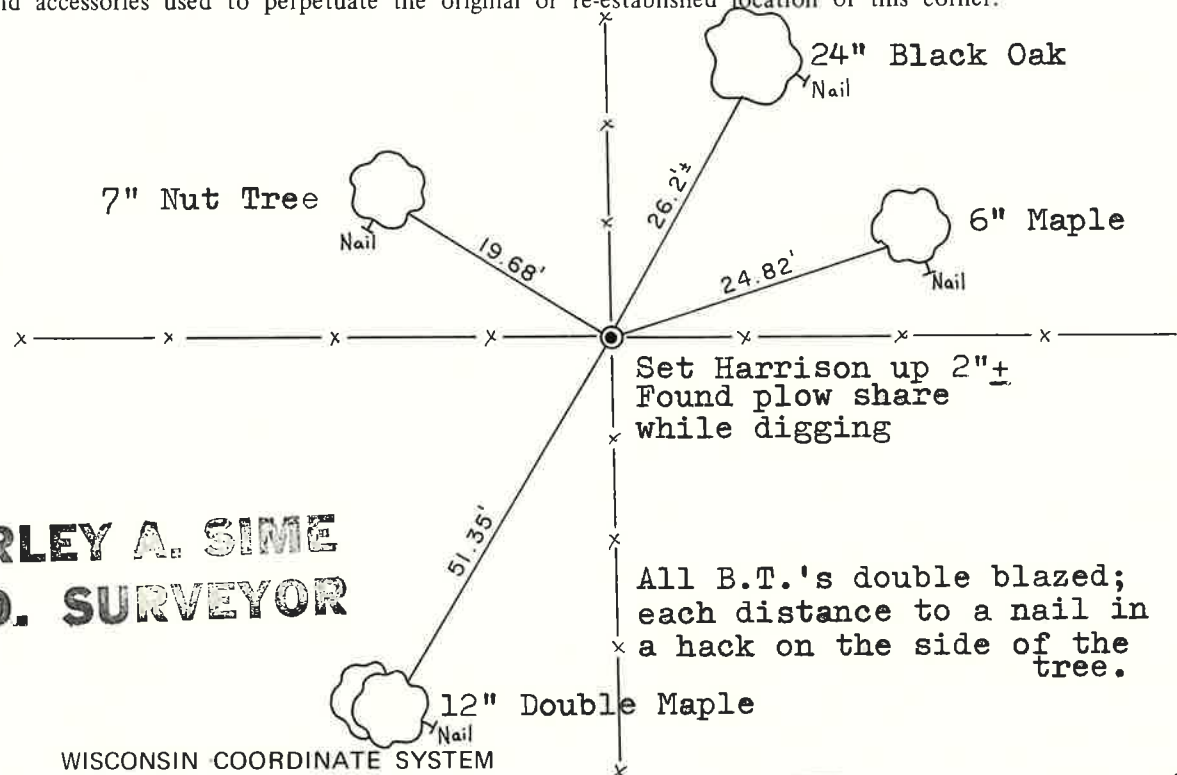
Witnesses to corner location:

Jung

Pliner



Approved: **HARLEY A. SIME**
MONROE CO. SURVEYOR



● = LOCATION CORNER
T 15 N R 1 E
WISCONSIN

SURVEY CONTROL ORDER

Horizontal	_____
Vertical	_____

WISCONSIN COORDINATE SYSTEM

Corner	East (X)	North (Y)	Elevation (Z)	Zone
Control Sta. Name				

~~City Village or~~ Town of Glendale
County of Monroe