

# U.S. PUBLIC LAND SURVEY MONUMENT RECORD

ROMPORTL #41501050000

HISTORY OF CORNER ESTABLISHMENT SINCE THE ORIGINAL GOVERNMENT SURVEY  
SEE PREVIOUS TIE SHEET.

DESCRIPTION OF CORNER EVIDENCE FOUND  
FOUND AND ACCEPTED HARRISON MONUMENT.

CREW/WITNESS FOR CORNER LOCATION  
-CHRISTIAN J. RUNNING  
-

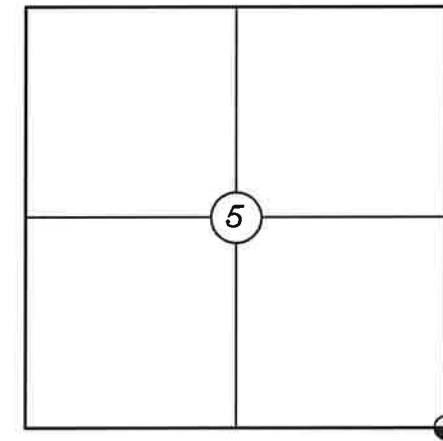
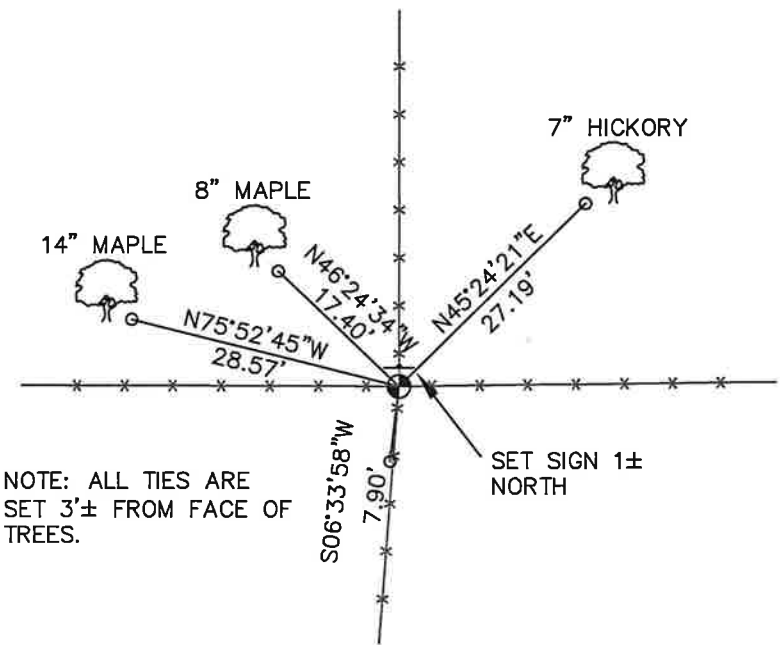
FIELD WORK COMPLETED 8/01/2023

I, CHRISTIAN J. RUNNING RLS 2558, HEREBY CERTIFY THAT THE COORDINATES PROVIDED ON THIS RECORD WERE DETERMINED BY ME OR UNDER MY DIRECT SUPERVISION AND THAT THIS FORM IS CORRECT TO THE BEST OF MY KNOWLEDGE AND BELIEF.

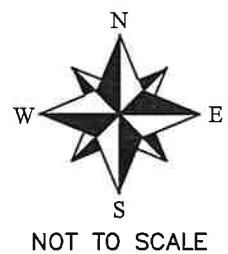
CHRISTIAN J. RUNNING  
PLS 2558  
RUNNING LAND SURVEYING  
700 DAUPHIN ST.  
LA CROSSE, WI 54603



SECTION 5, T15N, R1E,  
TOWN OF GLENDALE  
MONROE COUNTY  
WISCONSIN.



⊕ CORNER LOCATION



LEGEND

- ⊕ FOUND HARRISON MONUMENT
- SET 3/4" X 18" IRON BAR 1.5 LB/FT UNLESS NOTED

ALL BEARINGS ARE REFERENCED TO THE MONROE COUNTY COORDINATE SYSTEM NAD 83(2011)

MONROE COUNTY COORDINATES NAD 83(2011)  
NORTHING: 327105.8984  
EASTING: 736727.5667

41501050000

I, William C. Jung, do hereby certify that on the 18<sup>th</sup> day of June 19 79, I found (evidence) ~~(no evidence)~~ of the Northwest corner of Section 9, T 15 N, R 1 E Fourth Principal Meridian, and I re-established said corner according to the Wisconsin Statutes as shown and described hereon.

Dated this 13<sup>th</sup> day of Feb. 19 81.

William C. Jung

William C. Jung, R.L.S. 1323  
Title

History of corner establishment since Original Government Survey

Duane Marten set an iron bar at this corner in March of 1975.  
Gary Sime used this corner in the summer of 1976.

Description of corner evidence found:

Found the iron bar at the occupied fence corner, removed it and replaced it with a Harrison marker. Accepted the fence corner as the best available evidence of the original government survey.

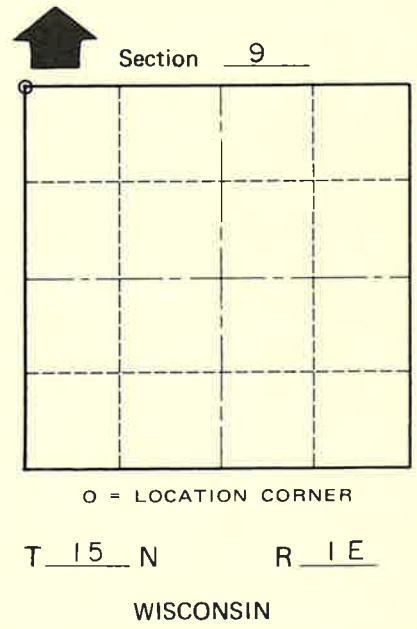
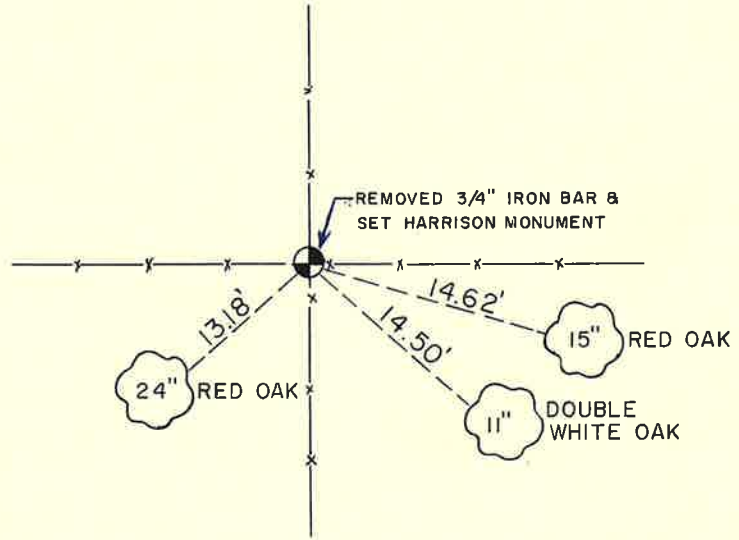
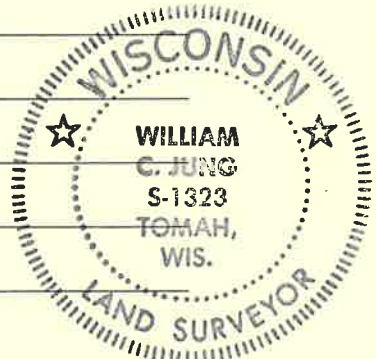
Approved: **HARLEY A. SIME**  
**MONROE CO. SURVEYOR**

Description of corner and witness monuments, references and accessories used to perpetuate the original or re-established location of this corner:

NOTE: ALL BEARING TREES DOUBLE BLAZED WITH NAIL & CAP SET.

Witnesses to corner location:

Jung  
Pietz  
Webb



COUNTY SURVEYOR FORM NO. 1

SURVEY CONTROL ORDER

Horizontal \_\_\_\_\_  
Vertical \_\_\_\_\_

WISCONSIN COORDINATE SYSTEM

Corner	East (X)	North (Y)	Elevation (Z)	Zone
Control Sta. Name				

\_\_\_\_\_ or Town Glendale  
County of Monroe