

U.S. PUBLIC LAND SURVEY MONUMENT RECORD

SECTION 29, T16N, R3W,
TOWN OF WELLS
MONROE COUNTY
WISCONSIN.

HISTORY OF CORNER ESTABLISHMENT SINCE THE ORIGINAL GOVERNMENT SURVEY
SEE PREVIOUS TIE SHEET.

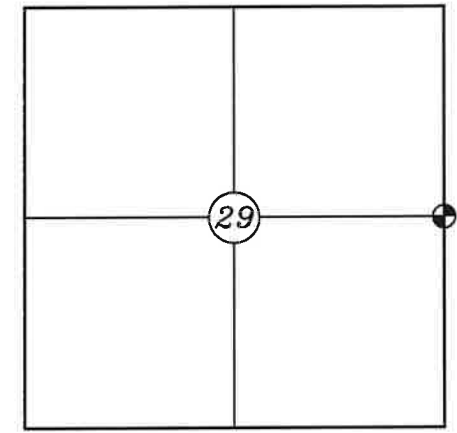
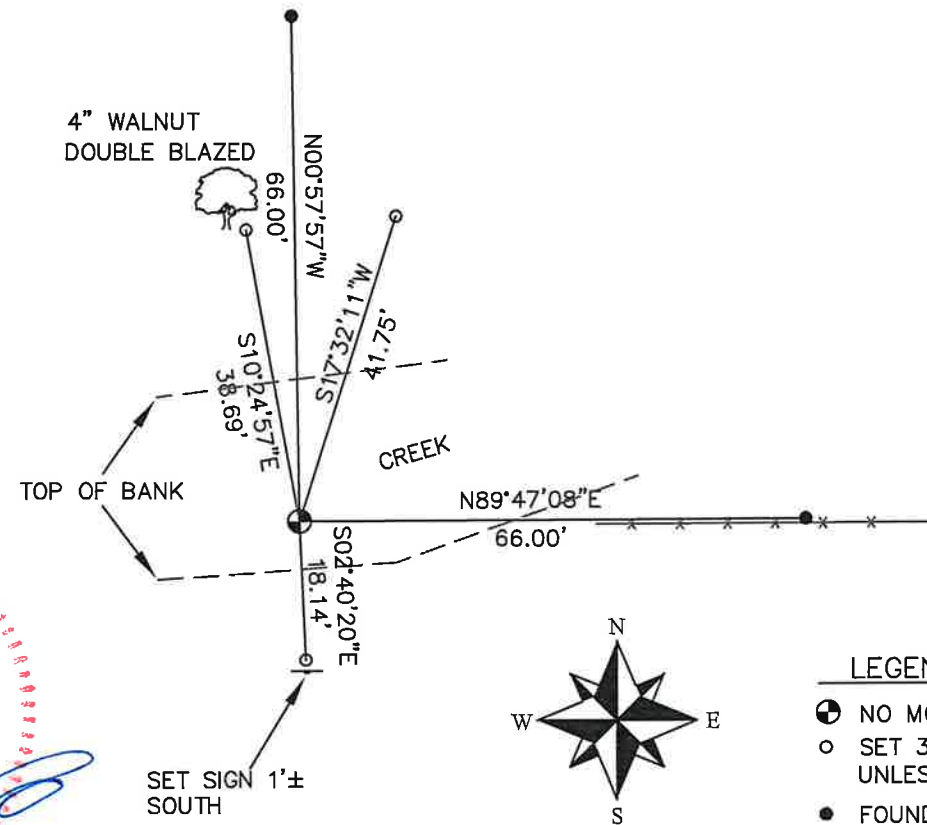
DESCRIPTION OF CORNER EVIDENCE FOUND
THERE IS NO MONUMENT SET AT THIS LOCATION. THE HARRISON THAT WAS SET BY GARY DECHANT WAS WASHED OUT BY THE CREEK.

CREW/WITNESS FOR CORNER LOCATION
-CHRISTIAN J. RUNNING
-

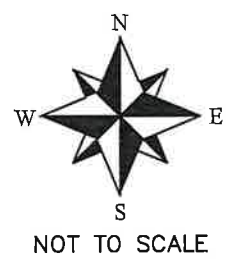
FIELD WORK COMPLETED 9/11/2023

I, CHRISTIAN J. RUNNING RLS 2558, HEREBY CERTIFY THAT THE COORDINATES PROVIDED ON THIS RECORD WERE DETERMINED BY ME OR UNDER MY DIRECT SUPERVISION AND THAT THIS FORM IS CORRECT TO THE BEST OF MY KNOWLEDGE AND BELIEF.

CHRISTIAN J. RUNNING
PLS 2558
RUNNING LAND SURVEYING
700 DAUPHIN ST.
LA CROSSE, WI 54603



⊕ CORNER LOCATION



LEGEND

- ⊕ NO MONUMENT
- SET 3/4" X 18" IRON BAR 1.5 LB/FT UNLESS NOTED
- FOUND 3/4" IRON BAR

ALL BEARINGS ARE REFERENCED TO THE MONROE COUNTY COORDINATE SYSTEM NAD 83(2011)

MONROE COUNTY COORDINATES NAD 83(2011)
NORTHING: 339812.7425
EASTING: 642071.9286

I, Gary L. Dechant, do hereby certify that on the 19th day of July 1988, I found (evidence) ~~(no evidence)~~ of the E 1/4 corner of Sec. 29, T16 N, R 3 W Fourth Principal Meridian, and I re-established said corner according to the Wisconsin Statutes as shown and described hereon.

Dated this 20th day of July 1988.

Gary L. Dechant

Reg. Land Surveyor, S-1744
Title

History of corner establishment since Original Government Survey

No known recorded history since the original government survey.

Description of corner evidence found:

Set corner in East-West fence line and in line with the NE and SE section corners.

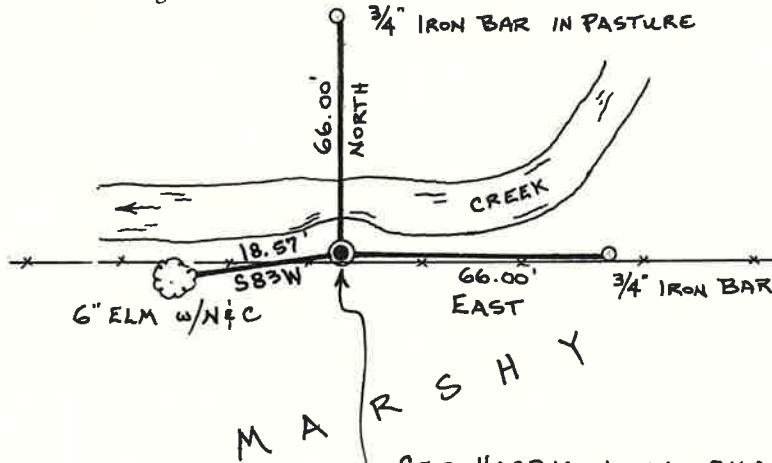
COUNTY SURVEYOR FORM NO. 1

Description of corner and witness monuments, references and accessories used to perpetuate the original or re-established location of this corner:

Witnesses to corner location:

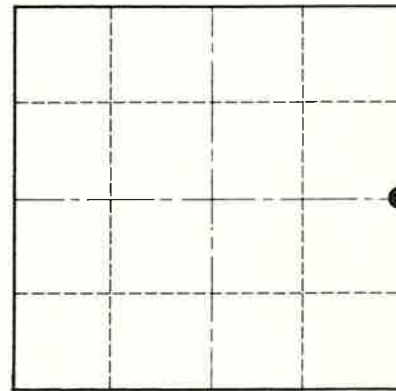
Dallas E. Wilhite

Gary L. Dechant



SET HARRISON IN SMALL MOUND, 10' SOUTH OF $\frac{1}{2}$ CREEK, SET SIGN 1' SOUTH, FOUND OLD 4" OAK POINTED POST LYING 2' SOUTH.

Section 29



● = LOCATION CORNER

T 16 N R 3 W

WISCONSIN

SURVEY CONTROL ORDER

Horizontal	
Vertical	

WISCONSIN COORDINATE SYSTEM

Corner	East (X)	North (Y)	Elevation (Z)	Zone
Control Sta. Name				

~~XXXXXX~~ Town Wells

County of Monroe