

# U.S. PUBLIC LAND SURVEY MONUMENT RECORD

ROMPORTL #21603210000

HISTORY OF CORNER ESTABLISHMENT SINCE THE ORIGINAL GOVERNMENT SURVEY  
SEE PREVIOUS TIE SHEET.

DESCRIPTION OF CORNER EVIDENCE FOUND  
FOUND AND ACCEPTED HARRISON MONUMENT AS SET BY GARY DECHANT, VERIFIED EXISTING TIES AND TOOK NEW TIES AS SHOWN.

CREW/WITNESS FOR CORNER LOCATION  
-CHRISTIAN J. RUNNING  
-

FIELD WORK COMPLETED 9/13/2023

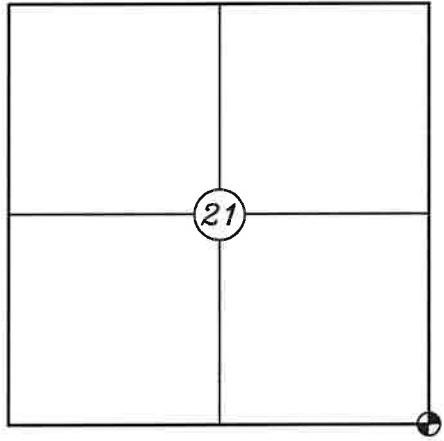
I, CHRISTIAN J. RUNNING RLS 2558, HEREBY CERTIFY THAT THE COORDINATES PROVIDED ON THIS RECORD WERE DETERMINED BY ME OR UNDER MY DIRECT SUPERVISION AND THAT THIS FORM IS CORRECT TO THE BEST OF MY KNOWLEDGE AND BELIEF.

CHRISTIAN J. RUNNING  
PLS 2558  
RUNNING LAND SURVEYING  
700 DAUPHIN ST.  
LA CROSSE, WI 54603

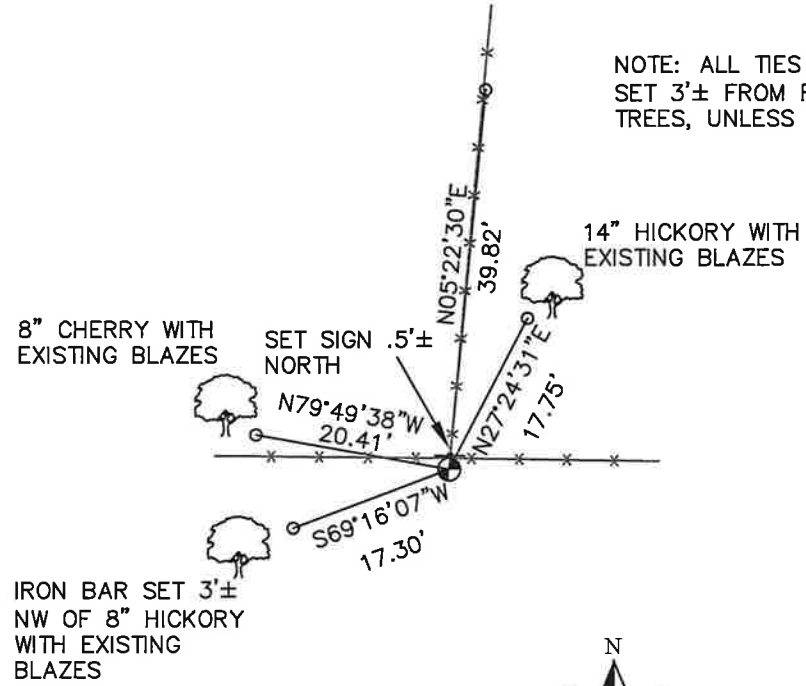


MONROE COUNTY COORDINATES NAD 83(2011)  
NORTHING: 342486.2741  
EASTING: 647304.6304

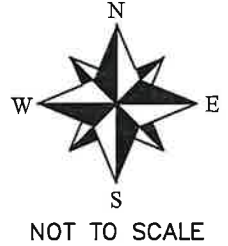
SECTION 21, T16N, R3W,  
TOWN OF WELLS  
MONROE COUNTY  
WISCONSIN.



● CORNER LOCATION



NOTE: ALL TIES ARE SET 3'± FROM FACE OF TREES, UNLESS NOTED.



LEGEND

- FOUND HARRISON MONUMENT
- SET 3/4" X 18" IRON BAR 1.5 LB/FT UNLESS NOTED

ALL BEARINGS ARE REFERENCED TO THE MONROE COUNTY COORDINATE SYSTEM NAD 83(2011)

I, Gary L. Dechant, do hereby certify that on the 17th day of November 1997, I found (evidence) (~~no evidence~~) of the SE corner of Section 21, T. 16 N, R. 3 W. Fourth Principal Meridian, and I re-established said corner according to the Wisconsin Statutes as shown and described hereon.

History of corner establishment since Original Government Survey

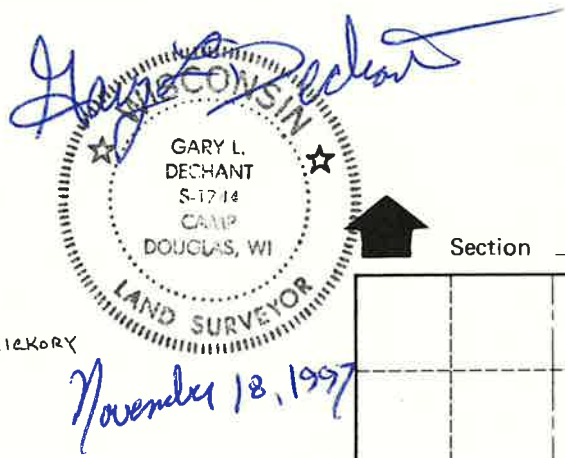
No known recorded history since the original government survey.

Description of corner evidence found:

Accepted fence corner as the best available evidence of the corner. The distance to the S $\frac{1}{4}$  corner is somewhat short (74.76'), but the distance to the "Bluff of land rock" fits very well. Original Government Notes.

Dated this 18th day of Nov. 1997.

Gary L. Dechant  
Registered Land Surveyor 1744  
Title

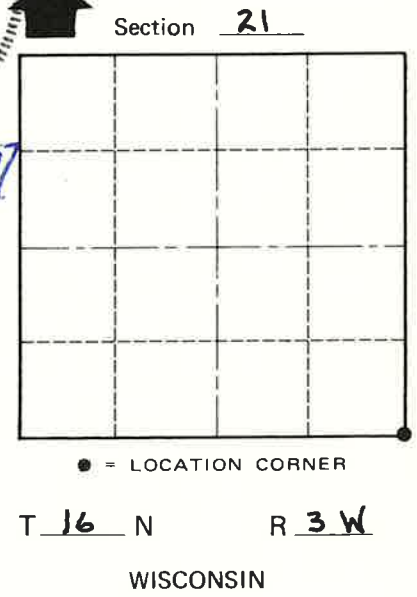
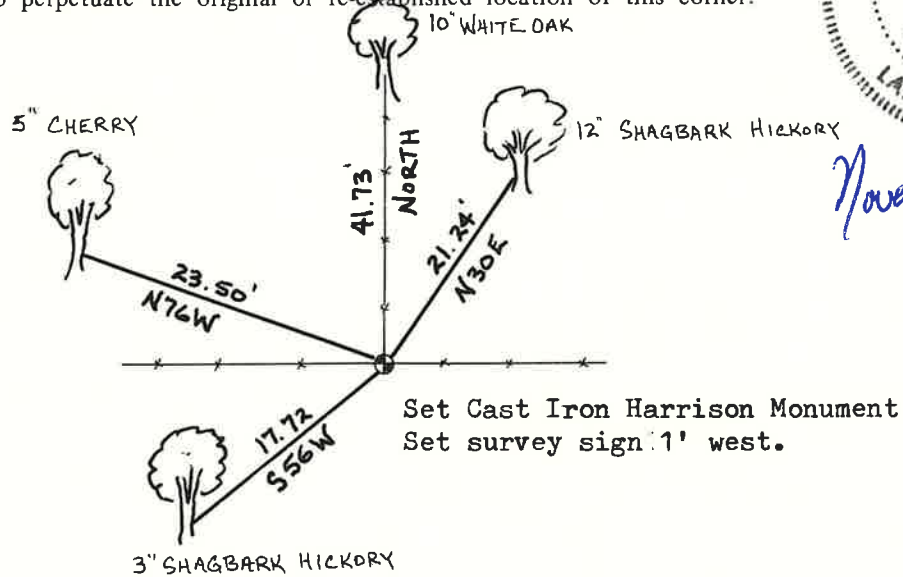


COUNTY SURVEYOR FORM NO. 1

Description of corner and witness monuments, references and accessories used to perpetuate the original or re-established location of this corner:

Witnesses to corner location:

David E. Madison  
Gary L. Dechant



T 16 N R 3 W  
WISCONSIN

(Trees double blazed with 40d nails set)

SURVEY CONTROL ORDER

Horizontal	_____
Vertical	_____

WISCONSIN COORDINATE SYSTEM

Corner	East (X)	North (Y)	Elevation (Z)	Zone
Control Sta. Name				

City, Village or Town WELLS  
County of MONROE