

U.S. PUBLIC LAND SURVEY MONUMENT RECORD

ROMPORTL #21603142000

HISTORY OF CORNER ESTABLISHMENT SINCE THE ORIGINAL GOVERNMENT SURVEY
SEE PREVIOUS TIE SHEET.

DESCRIPTION OF CORNER EVIDENCE FOUND

FOUND AND ACCEPTED HARRISON MONUMENT AS SET BY BILL JUNG, VERIFIED EXISTING TIES AND TOOK NEW TIES AS SHOWN.

CREW/WITNESS FOR CORNER LOCATION
-CHRISTIAN J. RUNNING

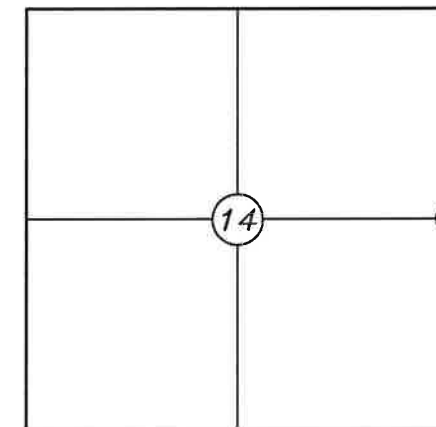
FIELD WORK COMPLETED 10/6/2023

I, CHRISTIAN J. RUNNING RLS 2558, HEREBY CERTIFY THAT THE COORDINATES PROVIDED ON THIS RECORD WERE DETERMINED BY ME OR UNDER MY DIRECT SUPERVISION AND THAT THIS FORM IS CORRECT TO THE BEST OF MY KNOWLEDGE AND BELIEF.

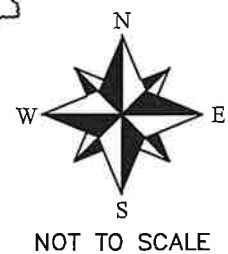
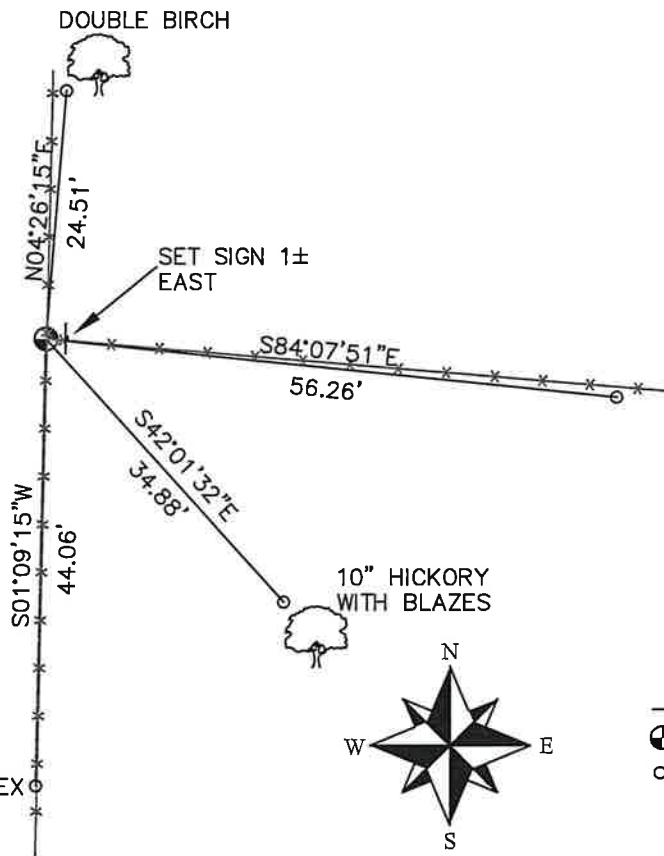
CHRISTIAN J. RUNNING
PLS 2558
RUNNING LAND SURVEYING
700 DAUPHIN ST.
LA CROSSE, WI 54603



SECTION 14, T16N, R3W,
TOWN OF WELLS
MONROE COUNTY
WISCONSIN.



⊕ CORNER LOCATION



LEGEND

- ⊕ FOUND HARRISON
- SET 3/4" X 18" IRON BAR 1.5 LB/FT UNLESS NOTED

ALL BEARINGS ARE REFERENCED TO THE MONROE COUNTY COORDINATE SYSTEM NAD 83(2011)

MONROE COUNTY COORDINATES NAD 83(2011)
NORTHING: 350246.5556
EASTING: 657975.0479

I, William C. Jung, do hereby certify that on the 8th day of May 19 79, I found (evidence) (~~no evidence~~) of the East 1/4 corner of Section 14, T 16 N, R 3 W Fourth Principal Meridian, and I re-established said corner according to the Wisconsin Statutes as shown and described hereon.

Dated this 16th day of Feb. 19 81.

William C. Jung
William C. Jung, R.L.S. 1323
Title

History of corner establishment since Original Government Survey

Kenyon (?) was at this corner in April of 1883. Fred Holden found Kenyon's stake at this corner in November of 1899 and April of 1900.

Description of corner evidence found:

Accepted the occupied fence corner as the best available evidence of the original government corner. This location agrees with other evidence found in the NE1/4 of Section 14. Set the top 1/2 of a Harrison marker.

Description of corner and witness monuments, references and accessories used to perpetuate the original or re-established location of this corner:

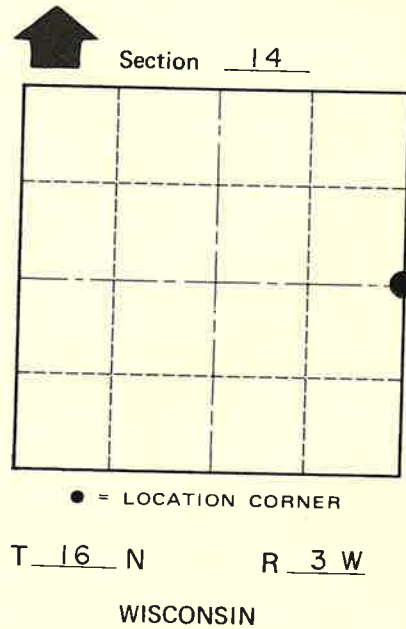
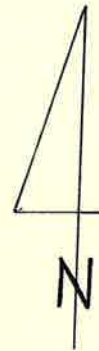
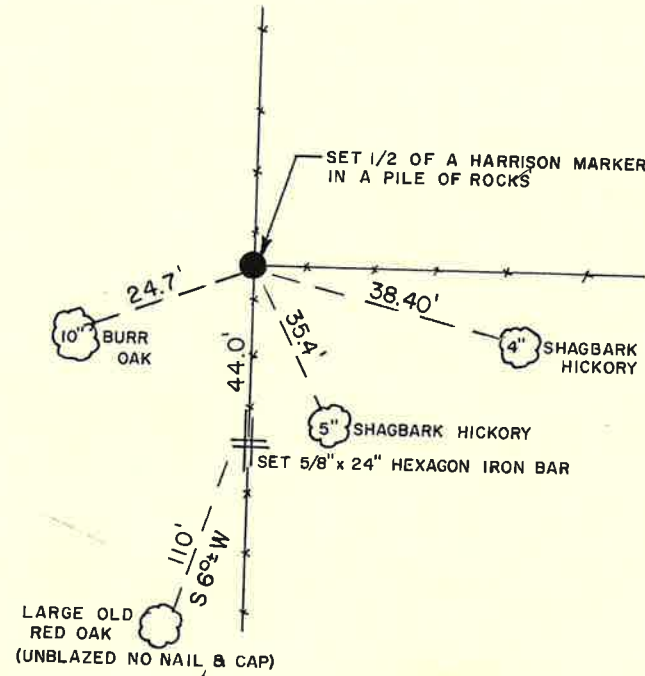
Witnesses to corner location:

Jung
Dechant

NOTE: ALL TREES DOUBLE BLAZED WITH NAIL & CAP SET



Approved: **HARLEY A. SIME**
MONROE CO. SURVEYOR



• = LOCATION CORNER

SURVEY CONTROL ORDER

Horizontal _____
Vertical _____

WISCONSIN COORDINATE SYSTEM

Corner	East (X)	North (Y)	Elevation (Z)	Zone
Control Sta. Name				

-City, Village or Town Wells

County of Monroe

COUNTY SURVEYOR FORM NO. 1