

# U.S. PUBLIC LAND SURVEY MONUMENT RECORD

ROMPORTL #21603110000

HISTORY OF CORNER ESTABLISHMENT SINCE THE ORIGINAL GOVERNMENT SURVEY  
SEE PREVIOUS TIE SHEET.

**SECTION 11, T16N, R3W,  
TOWN OF WELLS  
MONROE COUNTY  
WISCONSIN.**

DESCRIPTION OF CORNER EVIDENCE FOUND

FOUND AND ACCEPTED HARRISON MONUMENT AS SET BY BILL JUNG, VERIFIED EXISTING TIES AND TOOK NEW TIES AS SHOWN.

CREW/WITNESS FOR CORNER LOCATION  
-CHRISTIAN J. RUNNING  
-

FIELD WORK COMPLETED 10/6/2023

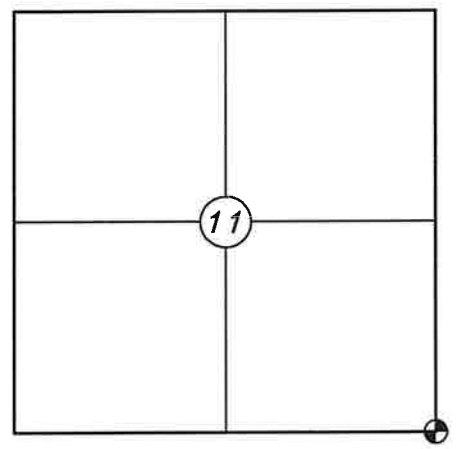
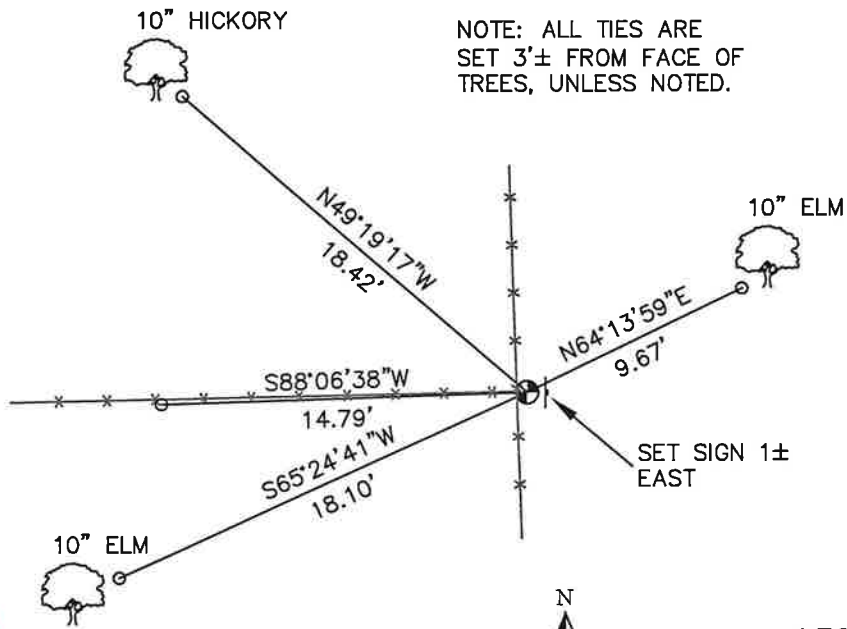
I, CHRISTIAN J. RUNNING RLS 2558, HEREBY CERTIFY THAT THE COORDINATES PROVIDED ON THIS RECORD WERE DETERMINED BY ME OR UNDER MY DIRECT SUPERVISION AND THAT THIS FORM IS CORRECT TO THE BEST OF MY KNOWLEDGE AND BELIEF.

CHRISTIAN J. RUNNING  
PLS 2558  
RUNNING LAND SURVEYING  
700 DAUPHIN ST.  
LA CROSSE, WI 54603

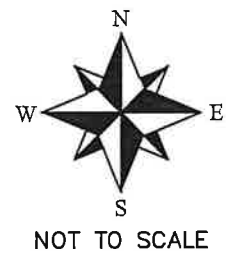


MONROE COUNTY COORDINATES NAD 83(2011)  
NORTHING: 352838.1043  
EASTING: 658024.0632

NOTE: ALL TIES ARE SET 3'± FROM FACE OF TREES, UNLESS NOTED.



⊕ CORNER LOCATION



LEGEND

- ⊕ FOUND HARRISON
- SET 3/4" X 18" IRON BAR 1.5 LB/FT UNLESS NOTED

ALL BEARINGS ARE REFERENCED TO THE MONROE COUNTY COORDINATE SYSTEM NAD 83(2011)

I, William C. Jung, do hereby certify that on the 8<sup>th</sup> day of May 19 79, I found (evidence) (~~no evidence~~) of the Southeast corner of Section 11, T 16 N, R 3 W Fourth Principal Meridian, and I re-established said corner according to the Wisconsin Statutes as shown and described hereon.

History of corner establishment since Original Government Survey

Fred Holden found LaRue's stake at this corner in Nov. of 1899 and April of 1900.

Description of corner evidence found:

Accepted the occupied fence corner as the best available evidence of the original government survey and monumented the corner with a Harrison marker. Fits the existing field evidence in Sections 11 and 14 very well.

Dated this 17<sup>th</sup> day of Feb. 19 81.

*William C. Jung*

William C. Jung, R.L.S. 1323  
Title

COUNTY SURVEYOR FORM NO. 1

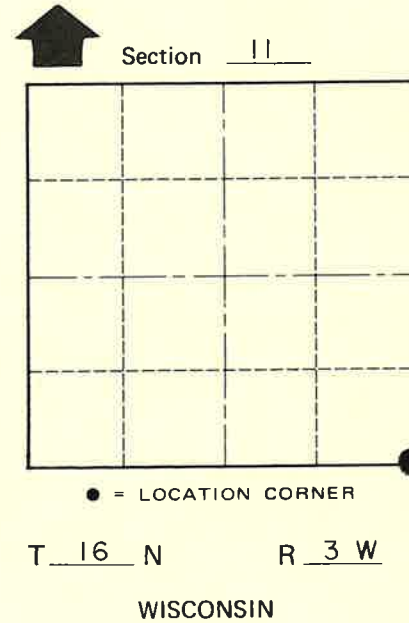
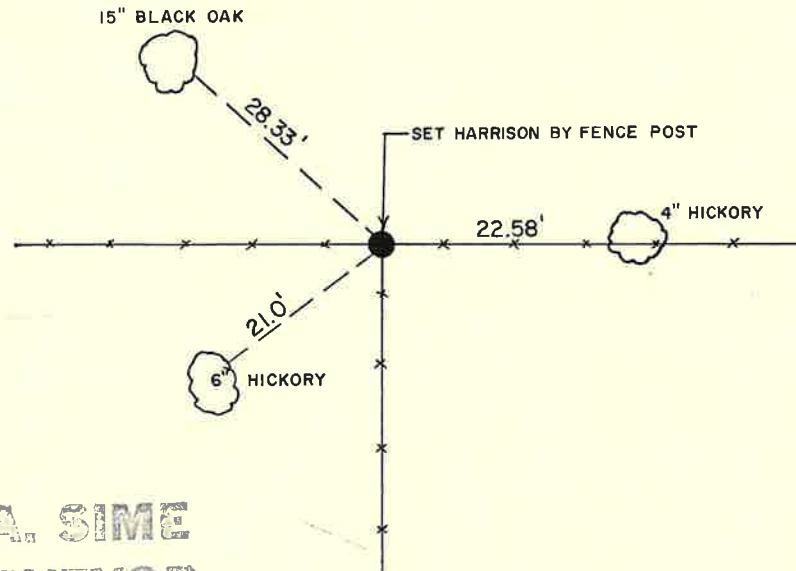
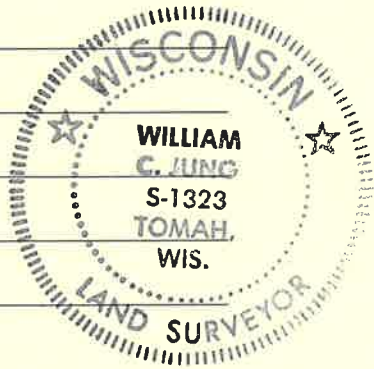
Description of corner and witness monuments, references and accessories used to perpetuate the original or re-established location of this corner:

NOTE: ALL TREES DOUBLE BLAZED WITH NAIL & CAP SET

Witnesses to corner location:

Jung

Dechat



Approved: **HARLEY A. SIME**  
**MONROE CO. SURVEYOR**

SURVEY CONTROL ORDER

Horizontal	_____
Vertical	_____

WISCONSIN COORDINATE SYSTEM

Corner	East (X)	North (Y)	Elevation (Z)	Zone
Control Sta. Name				

City, Village or Town Wells  
County of Monroe