

U.S. PUBLIC LAND SURVEY MONUMENT RECORD

ROMPORTL #21603080020

HISTORY OF CORNER ESTABLISHMENT SINCE THE ORIGINAL GOVERNMENT SURVEY
SEE PREVIOUS TIE SHEET.

DESCRIPTION OF CORNER EVIDENCE FOUND

FOUND AND ACCEPTED 1" IRON PIPE AS SET BY PATRICK CARROLL, VERIFIED EXISTING TIES AND TOOK NEW TIES AS SHOWN.

CREW/WITNESS FOR CORNER LOCATION
-CHRISTIAN J. RUNNING
-

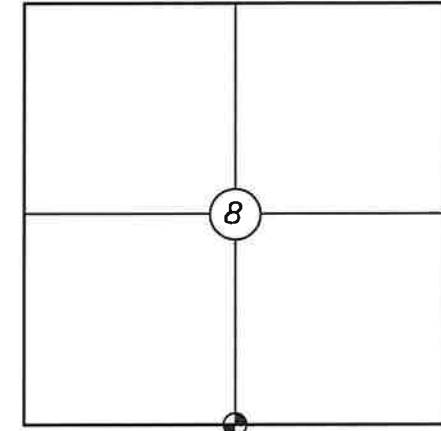
FIELD WORK COMPLETED 10/6/2023

I, CHRISTIAN J. RUNNING RLS 2558, HEREBY CERTIFY THAT THE COORDINATES PROVIDED ON THIS RECORD WERE DETERMINED BY ME OR UNDER MY DIRECT SUPERVISION AND THAT THIS FORM IS CORRECT TO THE BEST OF MY KNOWLEDGE AND BELIEF.

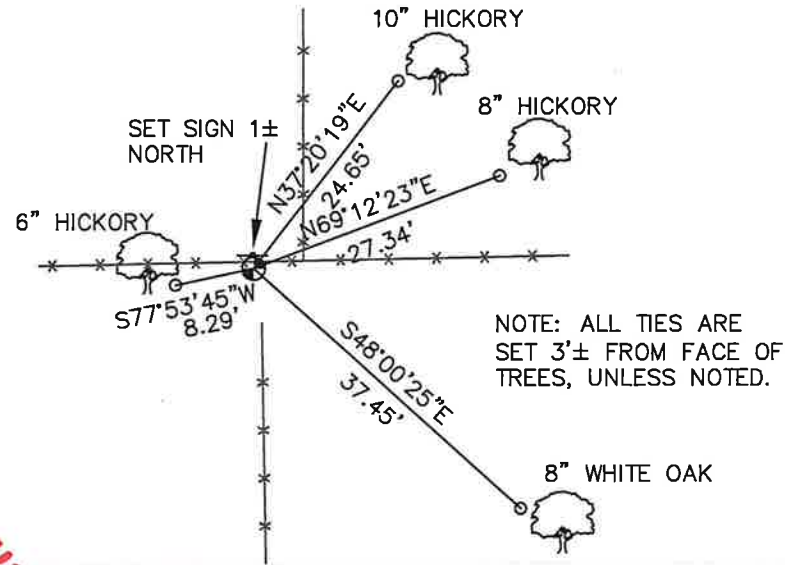
CHRISTIAN J. RUNNING
PLS 2558
RUNNING LAND SURVEYING
700 DAUPHIN ST.
LA CROSSE, WI 54603



SECTION 8, T16N, R3W,
TOWN OF WELLS
MONROE COUNTY
WISCONSIN.



● CORNER LOCATION



LEGEND

- FOUND 1" IRON PIPE
- SET 3/4" X 18" IRON BAR 1.5 LB/FT UNLESS NOTED

ALL BEARINGS ARE REFERENCED TO THE MONROE COUNTY COORDINATE SYSTEM NAD 83(2011)

MONROE COUNTY COORDINATES NAD 83(2011)
NORTHING: 353048.6351
EASTING: 639568.2810

Monroe

COUNTY

Survey Monument Record

TYPE OF MONUMENT: 1" x 24" IRON PIPE SET

STATE PLANE COORDINATES: N _____ E _____

ELEVATION - M.S.L. DATUM: _____

THETA ANGLE: _____

FIELD BOOK: _____ PAGE _____

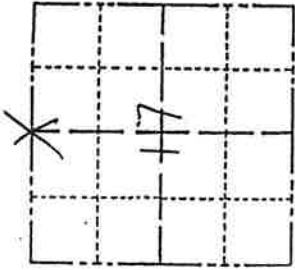
BASIS FOR MONUMENT LOCATION

(Use reverse side if necessary)

Show info such as: History of corner, with reference to Vol. and pg. dates, surveyor; exact description of monument replaced; if location computed, by taped or EDM traverse; landowner remarks, etc.

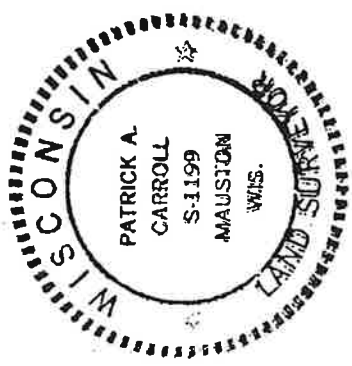
Per discussion with owner Mike Rengert,
The location of fence intersection is
accepted as the corner location.

CORNER NO. 50
SECTION 17
TOWN 16
RANGE 3W



LOCATION
(Indicated by 'X')

SEAL:



CERTIFIED CORRECT:

Patrick A. Carroll

Registered Land Surveyor

DATE: 2/3/99

TIE SKETCH

(Show at least four ties)

