

# U.S. PUBLIC LAND SURVEY MONUMENT RECORD

ROMPORTL #21601362000

HISTORY OF CORNER ESTABLISHMENT SINCE THE ORIGINAL GOVERNMENT SURVEY  
SEE PREVIOUS TIE SHEET.

DESCRIPTION OF CORNER EVIDENCE FOUND  
FOUND HARRISON AS SET BY GARY DECHANT LEANING. PLUMBED IT BACK AND PILED STONES AROUND IT, VERIFIED EXISTING TIES AND TOOK NEW TIES AS SHOWN.

**SECTION 36, T16N, R1W,  
TOWN OF WILTON  
MONROE COUNTY  
WISCONSIN.**

CREW/WITNESS FOR CORNER LOCATION  
-CHRISTIAN J. RUNNING  
-LEIGH A. RUNNING

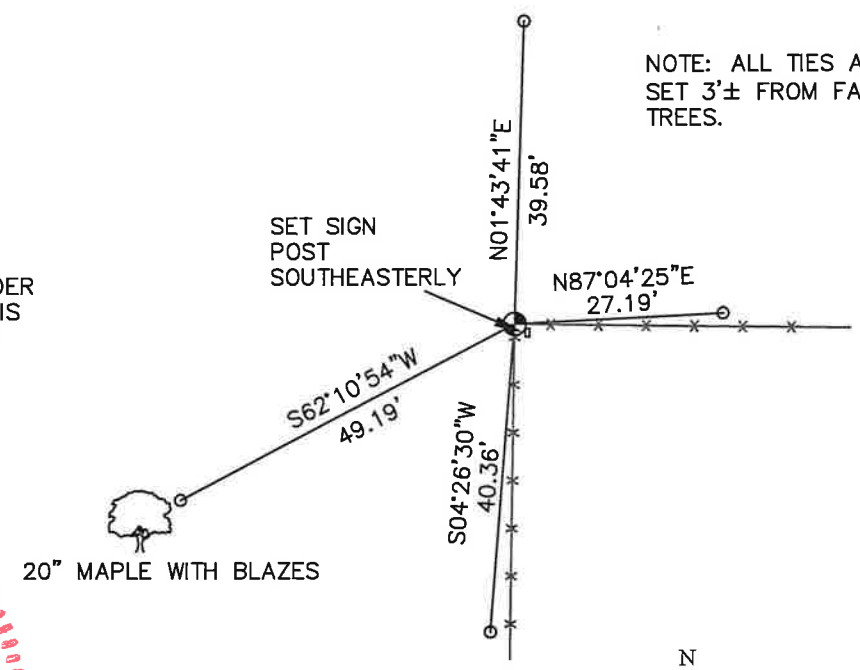
FIELD WORK COMPLETED 10/20/2023

I, CHRISTIAN J. RUNNING RLS 2558, HEREBY CERTIFY THAT THE COORDINATES PROVIDED ON THIS RECORD WERE DETERMINED BY ME OR UNDER MY DIRECT SUPERVISION AND THAT THIS FORM IS CORRECT TO THE BEST OF MY KNOWLEDGE AND BELIEF.

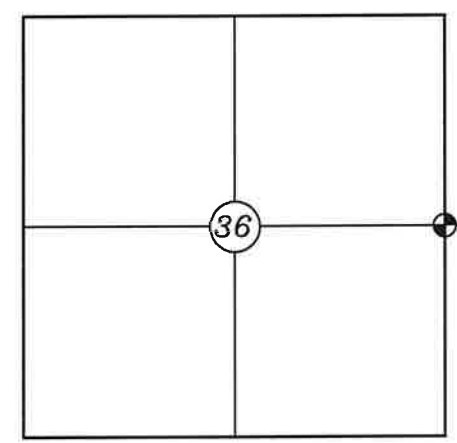
CHRISTIAN J. RUNNING  
PLS 2558  
RUNNING LAND SURVEYING  
700 DAUPHIN ST.  
LA CROSSE, WI 54603



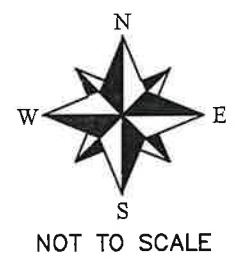
MONROE COUNTY COORDINATES NAD 83(2011)  
NORTHING: 334527.0209  
EASTING: 725965.8053



NOTE: ALL TIES ARE SET 3'± FROM FACE OF TREES.



⊕ CORNER LOCATION



LEGEND

- ⊕ FOUND HARRISON
- SET 3/4" X 18" IRON BAR 1.5 LB/FT UNLESS NOTED

ALL BEARINGS ARE REFERENCED TO THE MONROE COUNTY COORDINATE SYSTEM NAD 83(2011)

CERTIFICATE

I, Gary L. Dechant, do hereby certify that on the 14th day of December 1984, I found (evidence) (~~no evidence~~) of the W $\frac{1}{2}$  corner of Section 31, T16 N, R1E Fourth Principal Meridian, and I re-established said corner according to the Wisconsin Statutes as shown and described hereon.

Dated this 21st day of Dec. 1984.

Gary L. Dechant

Registered Land Surveyor, 1744  
Title

CERTIFIED LAND CORNER

History of corner establishment since Original Government Survey

Fred Holden was at this corner in April and May of 1901.

Description of corner evidence found:

Accepted fence corner as the best available evidence.

No. 114

**21601362000**

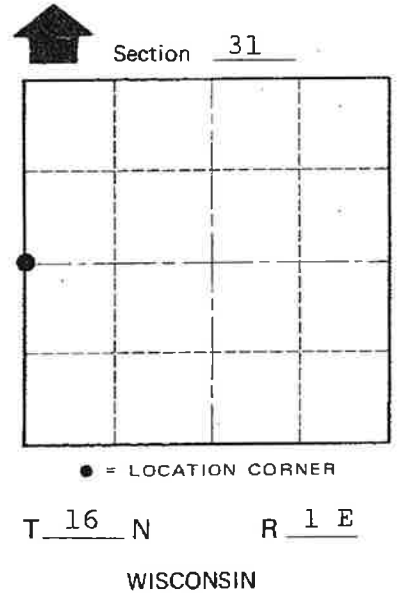
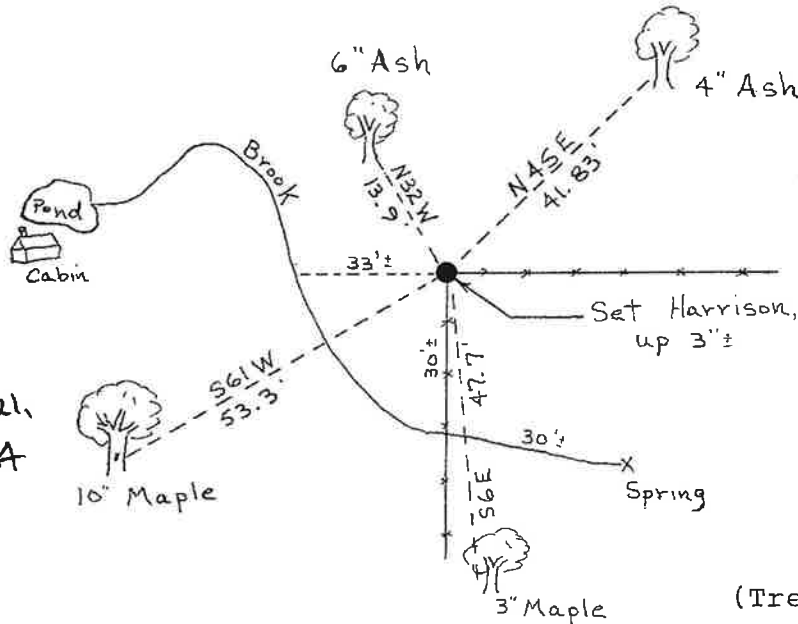
COUNTY SURVEYOR FORM NO. 1

Description of corner and witness monuments, references and accessories used to perpetuate the original or re-established location of this corner:

Witnesses to corner location:

Dan Rattle

Gary Dechant



SURVEY CONTROL ORDER

Horizontal \_\_\_\_\_

Vertical \_\_\_\_\_

WISCONSIN COORDINATE SYSTEM

Corner	East (X)	North (Y)	Elevation (Z)	Zone
Control Sta. Name				

(Trees double blazed with N&C's)

~~City, Village~~ Town Clifton  
County of Monroe