

U.S. PUBLIC LAND SURVEY MONUMENT RECORD

ROMPORTL #21601342000

HISTORY OF CORNER ESTABLISHMENT SINCE THE ORIGINAL GOVERNMENT SURVEY
SEE PREVIOUS TIE SHEET.

DESCRIPTION OF CORNER EVIDENCE FOUND
FOUND HARRISON AS SET BY HARLEY SIME, VERIFIED EXISTING TIES AND TOOK NEW TIES AS SHOWN.

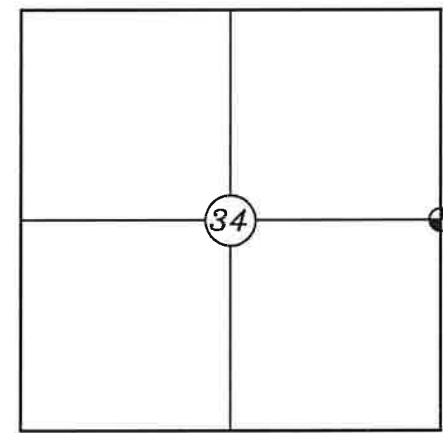
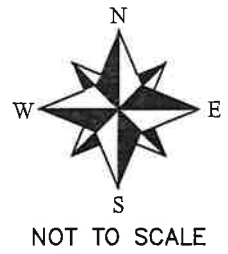
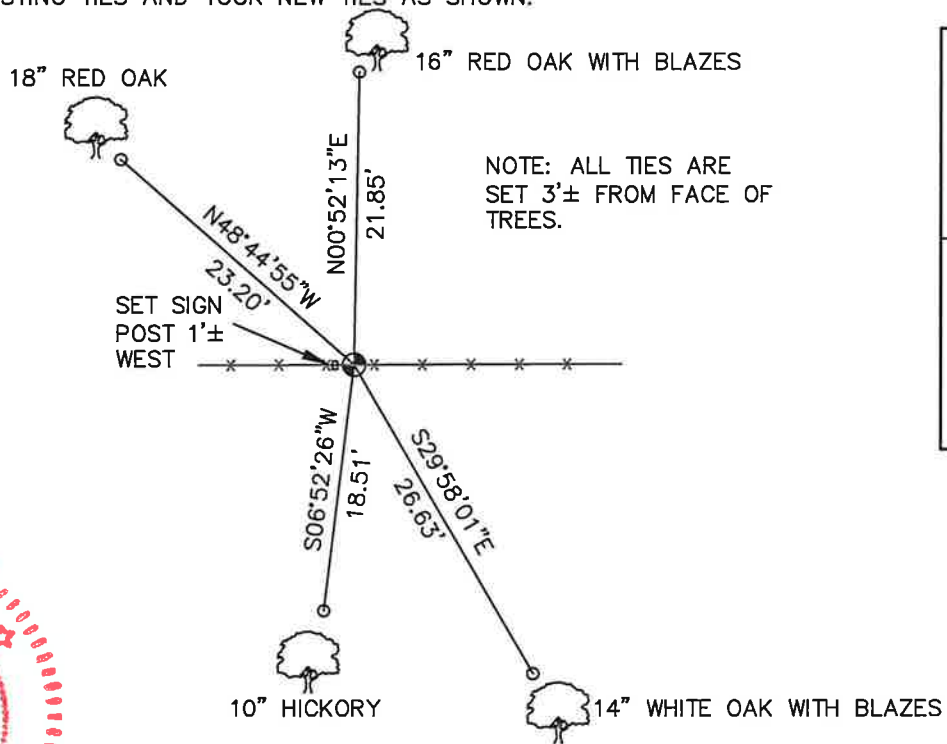
SECTION 34, T16N, R1W,
TOWN OF WILTON
MONROE COUNTY
WISCONSIN.

CREW/WITNESS FOR CORNER LOCATION
-CHRISTIAN J. RUNNING
-LEIGH A. RUNNING

FIELD WORK COMPLETED 10/20/2023

I, CHRISTIAN J. RUNNING RLS 2558, HEREBY CERTIFY THAT THE COORDINATES PROVIDED ON THIS RECORD WERE DETERMINED BY ME OR UNDER MY DIRECT SUPERVISION AND THAT THIS FORM IS CORRECT TO THE BEST OF MY KNOWLEDGE AND BELIEF.

CHRISTIAN J. RUNNING
PLS 2558
RUNNING LAND SURVEYING
700 DAUPHIN ST.
LA CROSSE, WI 54603



● CORNER LOCATION

LEGEND

- FOUND HARRISON
- SET 3/4" X 18" IRON BAR 1.5 LB/FT UNLESS NOTED

ALL BEARINGS ARE REFERENCED TO THE MONROE COUNTY COORDINATE SYSTEM NAD 83(2011)

MONROE COUNTY COORDINATES NAD 83(2011)
NORTHING: 334524.0141
EASTING: 715407.1895

I, Harley A. Sime, do hereby certify that on the 26th day of September 1980, I found ~~(evidence)~~ (no evidence) of the East 1/4 corner of Section 34, T16 N, R 1 W Fourth Principal Meridian, and I re-established said corner according to the Wisconsin Statutes as shown and described hereon.

Dated this 26th day of Sept. 1980.

Approved: **HARLEY A. SIME**
MONROE CO. SURVEYOR
Title

History of corner establishment since Original Government Survey
No known recorded history since the original government survey.

Description of corner evidence found:

Intersected E-W fence line with straight line between NE & SE corners of Sec. 34.

COUNTY SURVEYOR FORM NO. 1

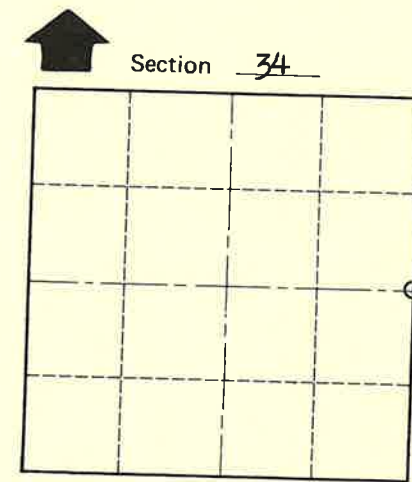
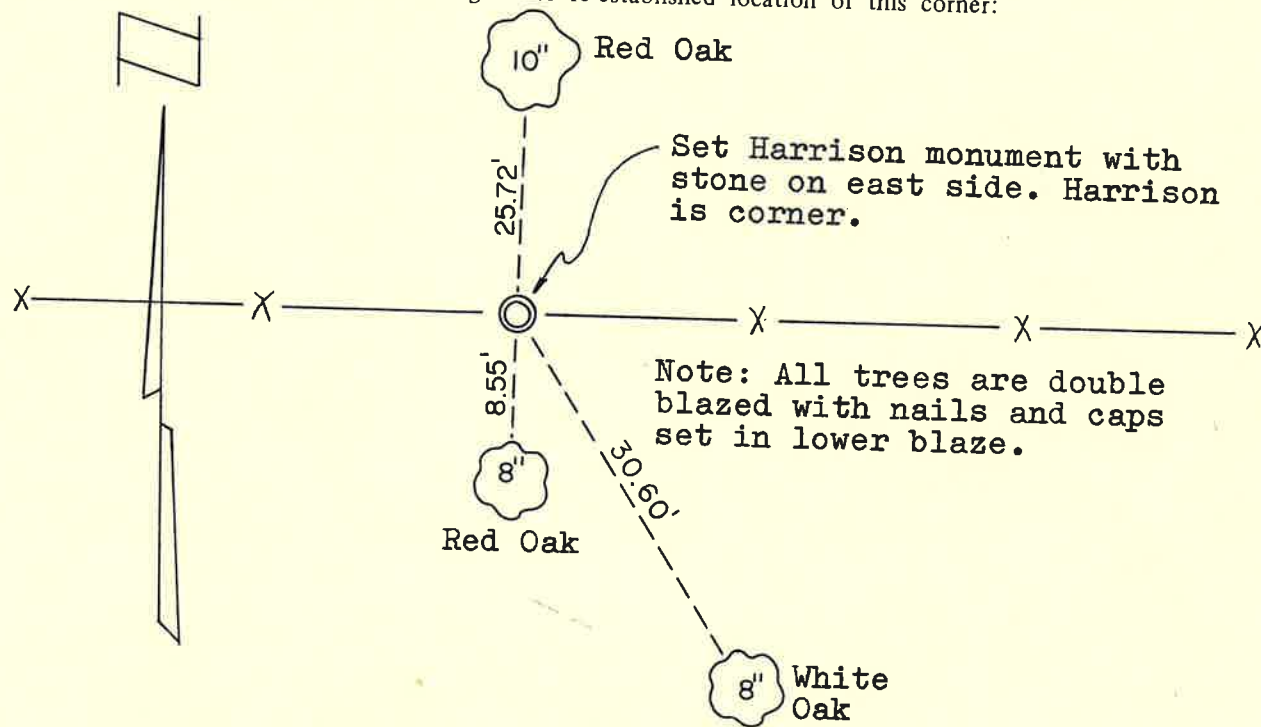
Description of corner and witness monuments, references and accessories used to perpetuate the original or re-established location of this corner:

Witnesses to corner location:

G. Dechant

B. Meyer

C. Dade



O = LOCATION CORNER

T 16 N R 1 W

WISCONSIN

SURVEY CONTROL ORDER

Horizontal _____

Vertical _____

WISCONSIN COORDINATE SYSTEM

Corner	East (X)	North (Y)	Elevation (Z)	Zone
Control Sta. Name				

City, Village or Town of Wilton

County of Monroe

Wisconsin