

U.S. PUBLIC LAND SURVEY MONUMENT RECORD

ROMPORTL #21601332000

HISTORY OF CORNER ESTABLISHMENT SINCE THE ORIGINAL GOVERNMENT SURVEY
SEE PREVIOUS TIE SHEET.

DESCRIPTION OF CORNER EVIDENCE FOUND
FOUND HARRISON WITH TOP MISSING, SET BY HARLEY SIME, VERIFIED EXISTING TIES AND TOOK NEW TIES AS SHOWN.

SECTION 33, T16N, R1W,
TOWN OF WILTON
MONROE COUNTY
WISCONSIN.

CREW/WITNESS FOR CORNER LOCATION
-CHRISTIAN J. RUNNING
-LEIGH A. RUNNING

FIELD WORK COMPLETED 10/20/2023

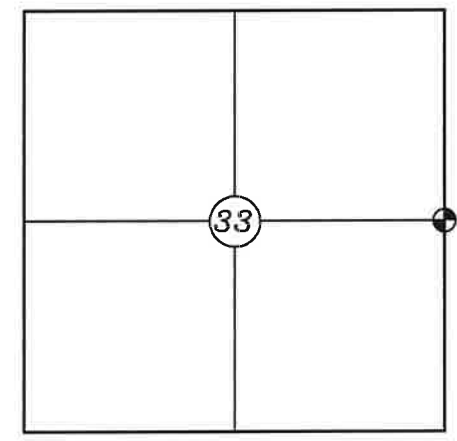
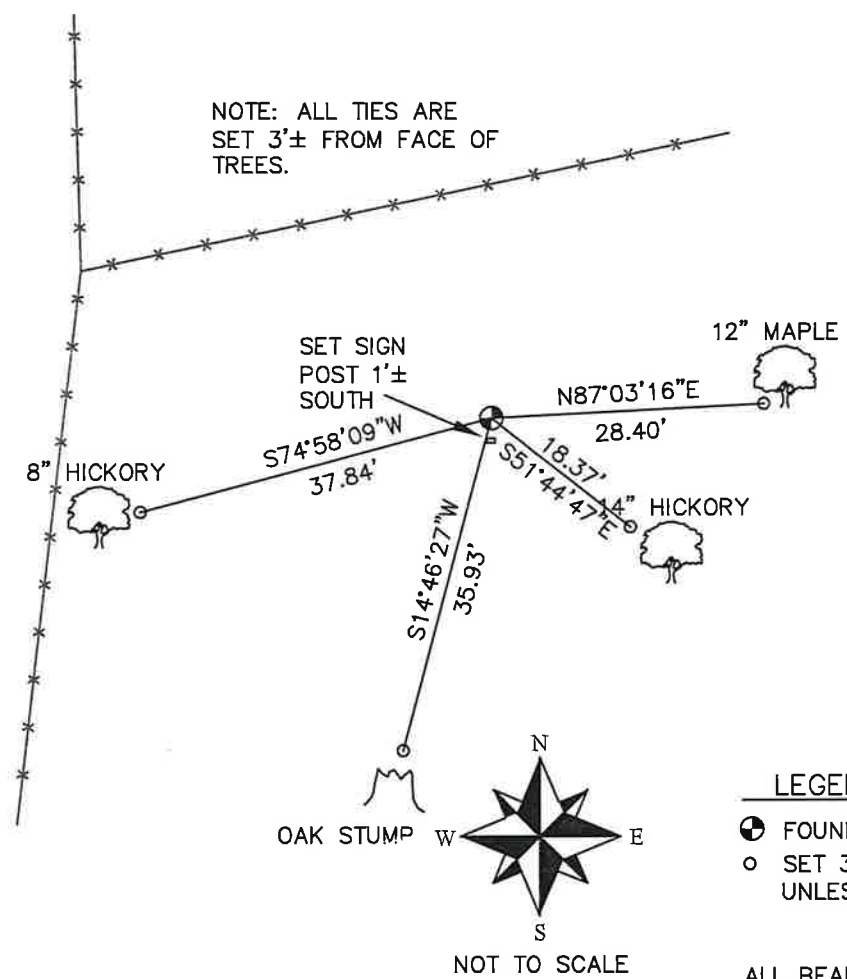
I, CHRISTIAN J. RUNNING RLS 2558, HEREBY CERTIFY THAT THE COORDINATES PROVIDED ON THIS RECORD WERE DETERMINED BY ME OR UNDER MY DIRECT SUPERVISION AND THAT THIS FORM IS CORRECT TO THE BEST OF MY KNOWLEDGE AND BELIEF.

CHRISTIAN J. RUNNING
PLS 2558
RUNNING LAND SURVEYING
700 DAUPHIN ST.
LA CROSSE, WI 54603



MONROE COUNTY COORDINATES NAD 83(2011)
NORTHING: 334484.6097
EASTING: 710102.9593

NOTE: ALL TIES ARE SET 3'± FROM FACE OF TREES.



⊕ CORNER LOCATION

LEGEND

- ⊕ FOUND HARRISON
- SET 3/4" X 18" IRON BAR 1.5 LB/FT UNLESS NOTED

ALL BEARINGS ARE REFERENCED TO THE MONROE COUNTY COORDINATE SYSTEM NAD 83(2011)



I, Harley A. Sime, do hereby certify that on the 26th day of September 1980, I found ~~(evidence)~~ (no evidence) of the West 1/4 corner of Section 34, T 16 N, R 1 W Fourth Principal Meridian, and I re-established said corner according to the Wisconsin Statutes as shown and described hereon.

Dated this 26th day of Sept. 1980.

Approved: HARLEY A. SIME
MONROE CO. SURVEYOR
 Title

History of corner establishment since Original Government Survey
 No known recorded history since the original government survey.

Description of corner evidence found:

Projected east-west fence line (between E1/4 corner and forty corner to west) West and intersected it with a straight line between the NW & SW corners of Sec. 34.

COUNTY SURVEYOR FORM NO. 1

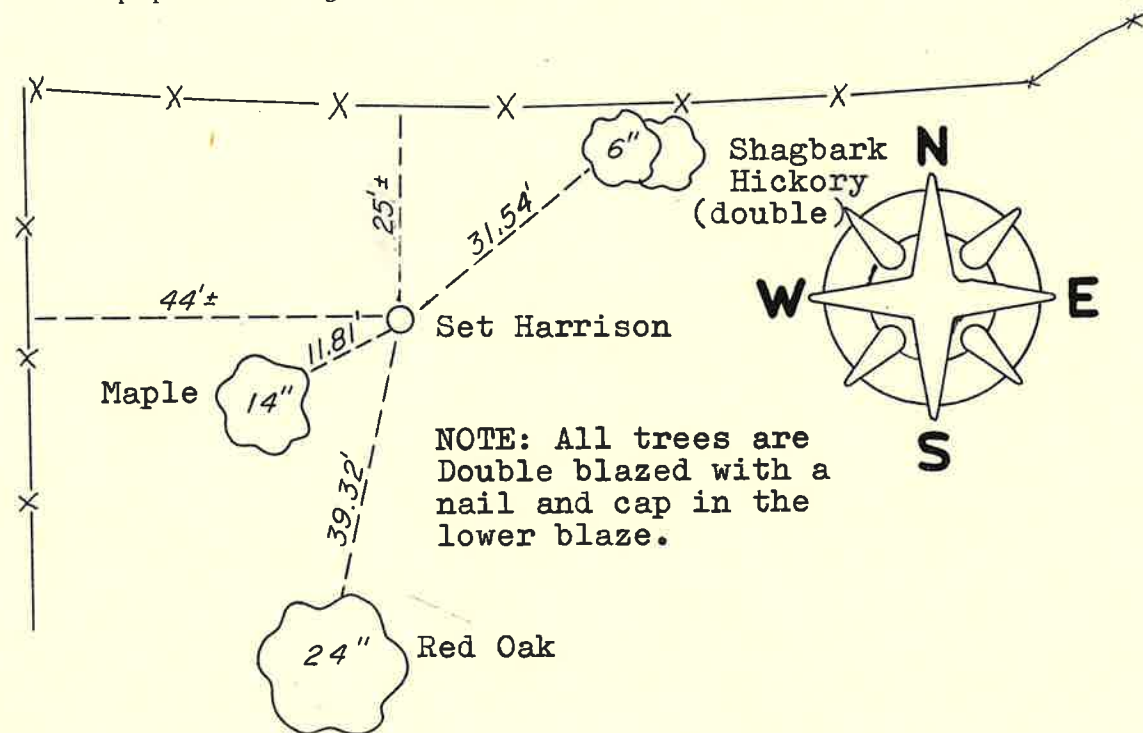
Description of corner and witness monuments, references and accessories used to perpetuate the original or re-established location of this corner:

Witnesses to corner location:

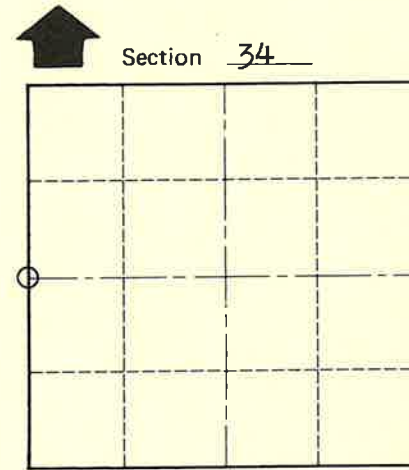
G. Dechant

B. Meyer

C. Dade



NOTE: All trees are Double blazed with a nail and cap in the lower blaze.



O = LOCATION CORNER

T 16 N R 1 W

WISCONSIN

SURVEY CONTROL ORDER

Horizontal	_____
Vertical	_____

WISCONSIN COORDINATE SYSTEM

Corner	East (X)	North (Y)	Elevation (Z)	Zone
Control Sta. Name				

City, Village or Town of Wilton
 County of Monroe
Wisconsin