

U.S. PUBLIC LAND SURVEY MONUMENT RECORD

ROMPORTL #21601330000

HISTORY OF CORNER ESTABLISHMENT SINCE THE ORIGINAL GOVERNMENT SURVEY
SEE PREVIOUS TIE SHEET.

**SECTION 33, T16N, R1W,
TOWN OF WILTON
MONROE COUNTY
WISCONSIN.**

DESCRIPTION OF CORNER EVIDENCE FOUND

FOUND HARRISON AS SET BY GARY DECHANT, VERIFIED EXISTING TIES AND TOOK NEW TIES AS SHOWN.

CREW/WITNESS FOR CORNER LOCATION
-CHRISTIAN J. RUNNING
-LEIGH A. RUNNING

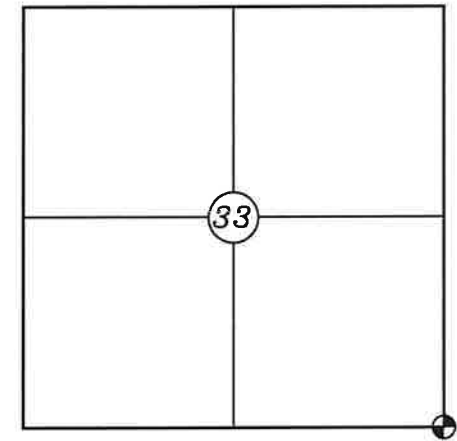
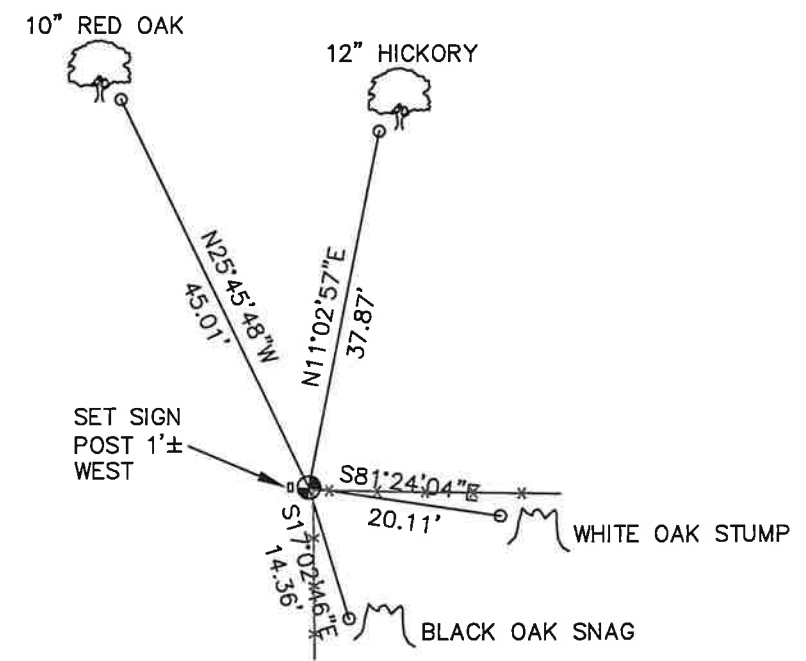
FIELD WORK COMPLETED 10/20/2023

I, CHRISTIAN J. RUNNING RLS 2558, HEREBY CERTIFY THAT THE COORDINATES PROVIDED ON THIS RECORD WERE DETERMINED BY ME OR UNDER MY DIRECT SUPERVISION AND THAT THIS FORM IS CORRECT TO THE BEST OF MY KNOWLEDGE AND BELIEF.

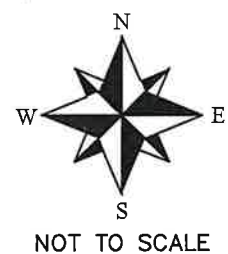
CHRISTIAN J. RUNNING
PLS 2558
RUNNING LAND SURVEYING
700 DAUPHIN ST.
LA CROSSE, WI 54603



MONROE COUNTY COORDINATES NAD 83(2011)
NORTHING: 331832.5967
EASTING: 710185.1592



● CORNER LOCATION



LEGEND

- FOUND HARRISON
- SET 3/4" X 18" IRON BAR 1.5 LB/FT UNLESS NOTED

ALL BEARINGS ARE REFERENCED TO THE MONROE COUNTY COORDINATE SYSTEM NAD 83(2011)

I, Harley A. Sime, do hereby certify that on the 26th day of September 1980, I found ~~(evidence)~~ (no evidence) of the S.W. corner of Section 34, T 16 N, R 1 W Fourth Principal Meridian, and I re-established said corner according to the Wisconsin Statutes as shown and described hereon.

Dated this 29th day of Sept. 1980.

History of corner establishment since Original Government Survey

A. S. Ingalls was here in May of 1873.

Description of corner evidence found:

Projected line between S¼ & SE corners West and intersected it with N-S fence line at west line of Sec. 34.

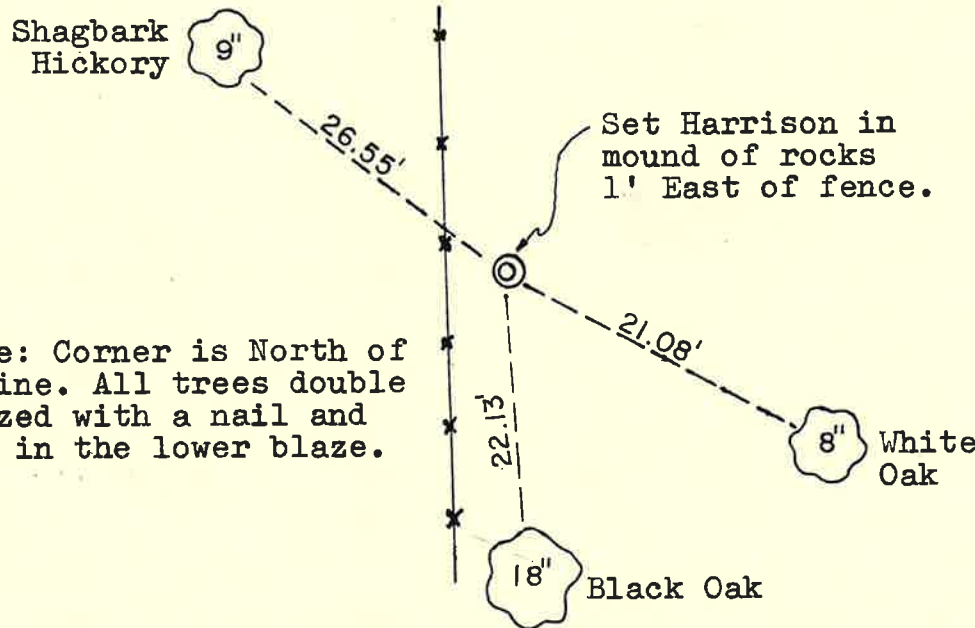
Approved: HARLEY A. SIME
MONROE CO. SURVEYOR
 Title

COUNTY SURVEYOR FORM NO. 1

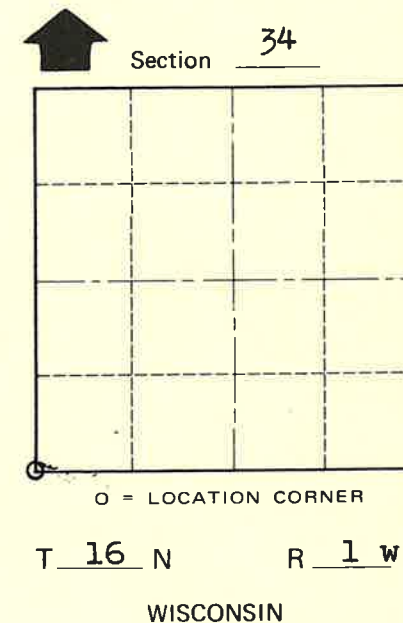
Description of corner and witness monuments, references and accessories used to perpetuate the original or re-established location of this corner:

Witnesses to corner location:

- G. Dechant
- B. Meyer
- C. Dade



Note: Corner is North of ravine. All trees double blazed with a nail and cap in the lower blaze.



SURVEY CONTROL ORDER

Horizontal	_____
Vertical	_____

WISCONSIN COORDINATE SYSTEM

Corner	East (X)	North (Y)	Elevation (Z)	Zone
Control Sta. Name				

~~City, Village or~~ Town of Wilton
 County of Monroe
Wisconsin