

# U.S. PUBLIC LAND SURVEY MONUMENT RECORD

ROMPORTL #21601320000

HISTORY OF CORNER ESTABLISHMENT SINCE THE ORIGINAL GOVERNMENT SURVEY  
SEE PREVIOUS TIE SHEET.

### DESCRIPTION OF CORNER EVIDENCE FOUND

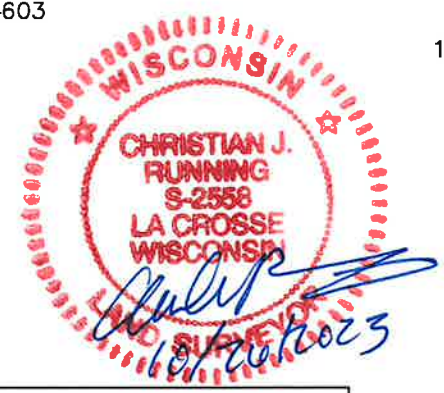
FOUND THE 30" HARRISON AS SET BY RONALD PARRISH STICKING 24" OUT OF THE GROUND AND LEANING DOWNHILL. IT IS CLEAR THAT THE ROOTS OF THE BIRCH AND ROCKS PREVENTED HIM FROM PROPERLY SETTING THE MONUMENT. I REMOVED THE MONUMENT AND IN THE PROCESS THE BOTTOM FEW INCHES BROKE OFF. I SET A 3/4"X18" REBAR IN ITS PLACE AND MOUNDED ROCKS AROUND IT.

CREW/WITNESS FOR CORNER LOCATION  
-CHRISTIAN J. RUNNING  
-LEIGH A. RUNNING

FIELD WORK COMPLETED 10/17/2023

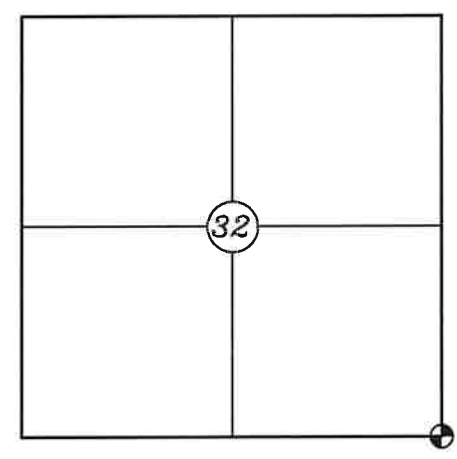
I, CHRISTIAN J. RUNNING RLS 2558, HEREBY CERTIFY THAT THE COORDINATES PROVIDED ON THIS RECORD WERE DETERMINED BY ME OR UNDER MY DIRECT SUPERVISION AND THAT THIS FORM IS CORRECT TO THE BEST OF MY KNOWLEDGE AND BELIEF.

CHRISTIAN J. RUNNING  
PLS 2558  
RUNNING LAND SURVEYING  
700 DAUPHIN ST.  
LA CROSSE, WI 54603

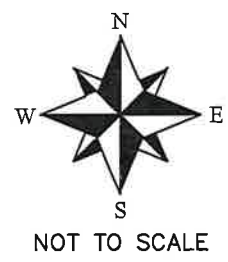
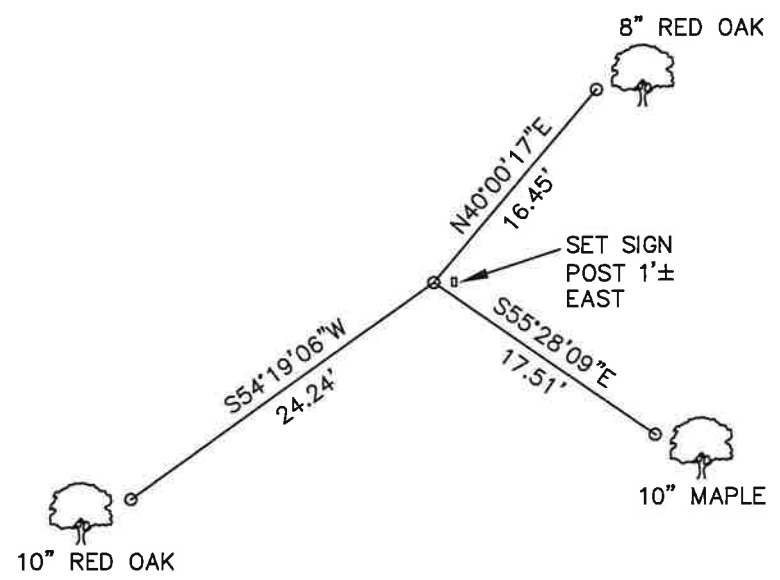


MONROE COUNTY COORDINATES NAD 83(2011)  
NORTHING: 331818.9348  
EASTING: 704929.2382

SECTION 32, T16N, R1W,  
TOWN OF WILTON  
MONROE COUNTY  
WISCONSIN.



● CORNER LOCATION



### LEGEND

○ SET 3/4" X 18" IRON BAR 1.5 LB/FT  
UNLESS NOTED

ALL BEARINGS ARE REFERENCED TO  
THE MONROE COUNTY COORDINATE SYSTEM NAD 83(2011)

I, RONALD D. PARISH, do hereby certify that on the 19th day of JANUARY 1983, I found ~~(evidence)~~ (no evidence) of the SW corner of SECTION 33, T16 N, R1 W Fourth Principal Meridian, and I re-established said corner according to the Wisconsin Statutes as shown and described hereon.

Dated this 11th day of FEB. 1983.

Ronald D. Parish, R.L.S.

Title

History of corner establishment since Original Government Survey  
**NO RECORDED HISTORY SINCE ORIGINAL SURVEY**

Description of corner evidence found:

**SET CORNER EQUI DISTANCE ON A LINE BETWEEN S¼ COR. SEC. 33 & S¼ COR. SEC. 32. THIS FITS A CALL FOR SUMMIT OF SANDSTONE LEDGE 5 CHAINS EAST OF CORNER.**

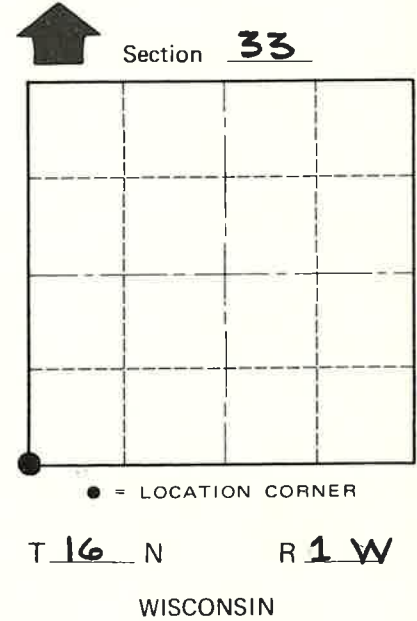
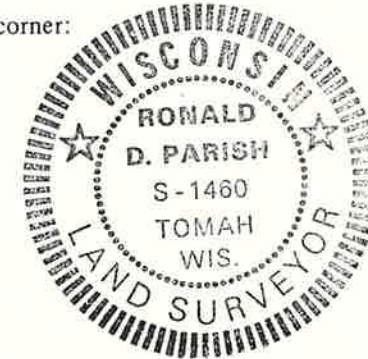
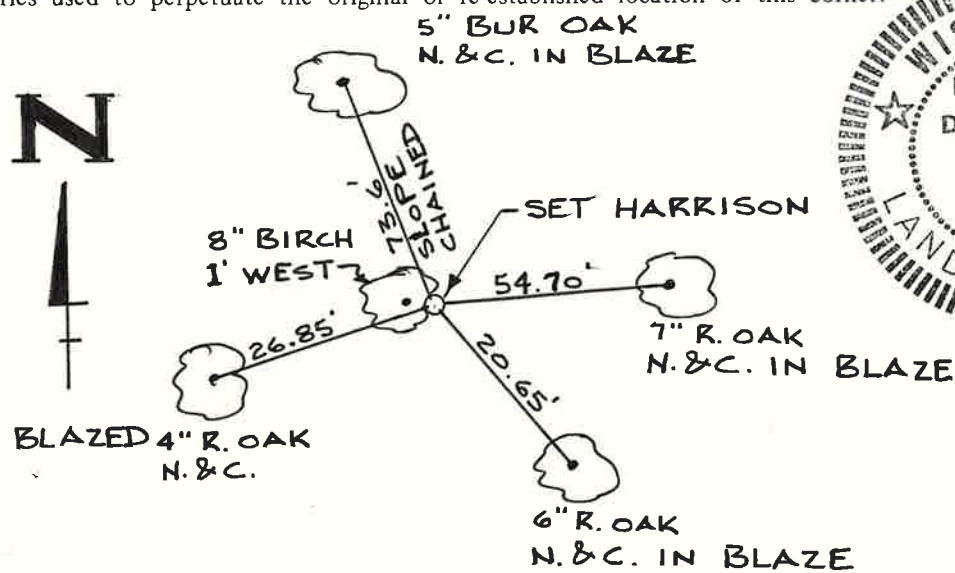
COUNTY SURVEYOR FORM NO. 1

Description of corner and witness monuments, references and accessories used to perpetuate the original or re-established location of this corner:

Witnesses to corner location:

RONALD D. PARISH

DAN DOWNING



**Approved: HARLEY A. SIME  
 MONROE CO. SURVEYOR**

SURVEY CONTROL ORDER

Horizontal \_\_\_\_\_

Vertical \_\_\_\_\_

WISCONSIN COORDINATE SYSTEM

Corner	East (X)	North (Y)	Elevation (Z)	Zone
Control Sta. Name				

City, Village or Town WILTON  
 County of MONROE