

# U.S. PUBLIC LAND SURVEY MONUMENT RECORD

ROMPORTL #21601290020

HISTORY OF CORNER ESTABLISHMENT SINCE THE ORIGINAL GOVERNMENT SURVEY  
SEE PREVIOUS TIE SHEET.

DESCRIPTION OF CORNER EVIDENCE FOUND  
FOUND HARRISON AS SET BY GARY SIME, VERIFIED EXISTING TIES AND TOOK NEW TIES AS SHOWN.

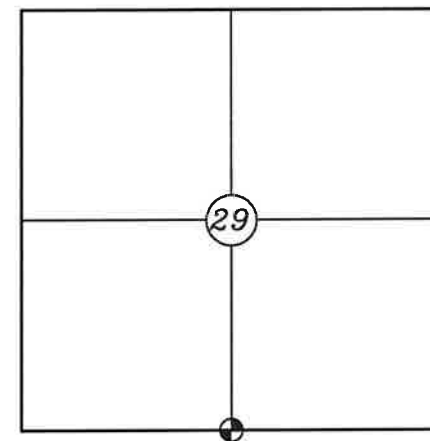
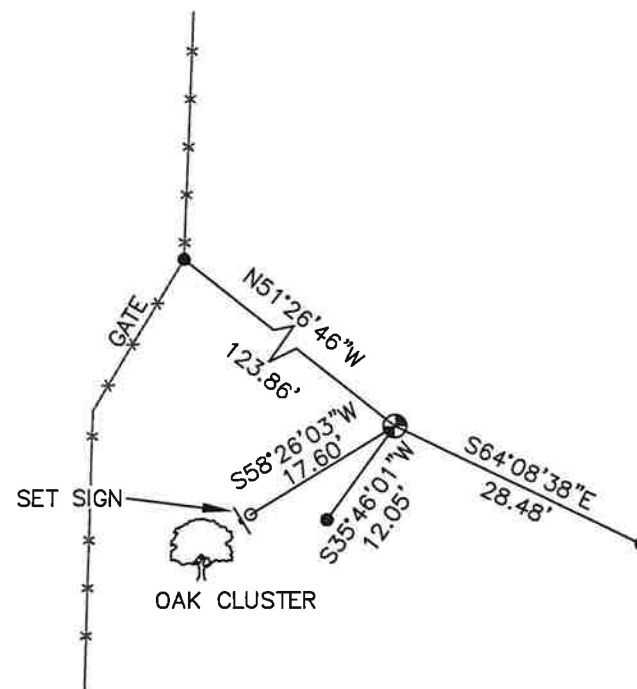
**SECTION 29, T16N, R1W,  
TOWN OF WILTON  
MONROE COUNTY  
WISCONSIN.**

CREW/WITNESS FOR CORNER LOCATION  
-CHRISTIAN J. RUNNING  
-LEIGH A. RUNNING

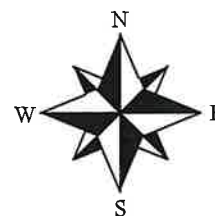
FIELD WORK COMPLETED 10/17/2023

I, CHRISTIAN J. RUNNING RLS 2558, HEREBY CERTIFY THAT THE COORDINATES PROVIDED ON THIS RECORD WERE DETERMINED BY ME OR UNDER MY DIRECT SUPERVISION AND THAT THIS FORM IS CORRECT TO THE BEST OF MY KNOWLEDGE AND BELIEF.

CHRISTIAN J. RUNNING  
PLS 2558  
RUNNING LAND SURVEYING  
700 DAUPHIN ST.  
LA CROSSE, WI 54603



● CORNER LOCATION



NOT TO SCALE

### LEGEND

- FOUND HARRISON
- EXISTING 1" IRON PIPE TIE
- SET 3/4" X 18" IRON BAR 1.5 LB/FT UNLESS NOTED

ALL BEARINGS ARE REFERENCED TO THE MONROE COUNTY COORDINATE SYSTEM NAD 83(2011)

MONROE COUNTY COORDINATES NAD 83(2011)  
NORTHING: 337075.6781  
EASTING: 702122.0442

CERTIFICATE

CERTIFIED LAND CORNER

21601290020

No. 110

I, Garold A. Sime, do hereby certify that on the 24th day of April 1991, I found (evidence) (~~no evidence~~) of the S 1/4 corner of Section 29, T. 16 N, R 1 W Fourth Principal Meridian, and I re-established said corner according to the Wisconsin Statutes as shown and described hereon.

Dated this 15th day of August 1991.

Garold A. Sime

Monroe County Surveyor  
Title

History of corner establishment since Original Government Survey

No recorded history of corner location since the Original Government Survey.

Description of corner evidence found:

I established this corner on line and equidistant between the existing section corners.

COUNTY SURVEYOR FORM NO. 1

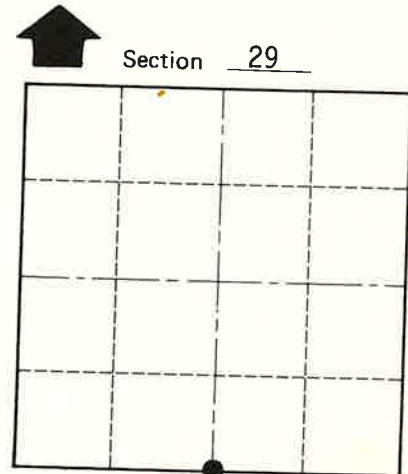
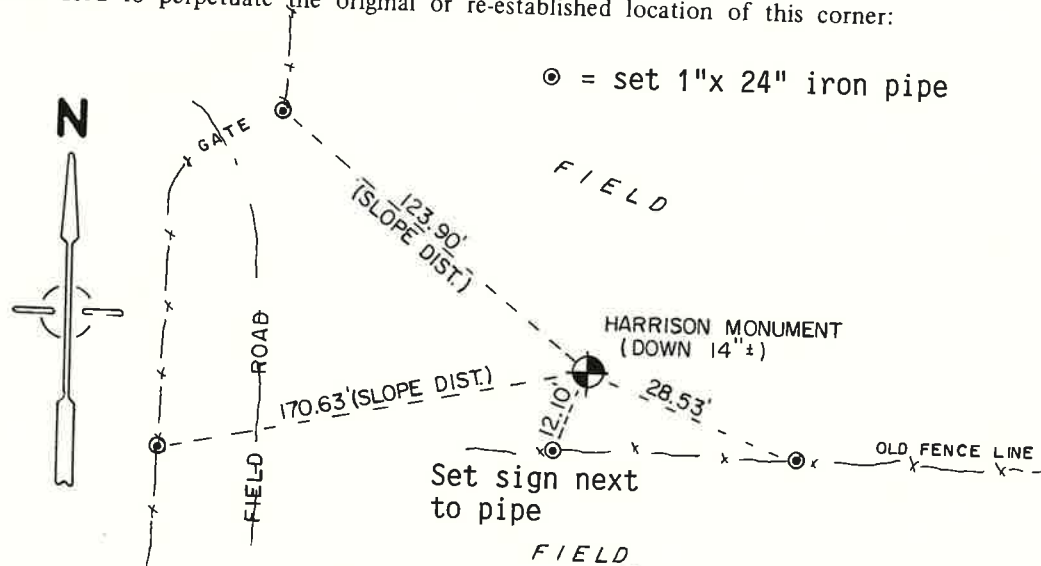
Description of corner and witness monuments, references and accessories used to perpetuate the original or re-established location of this corner:  
Set cast iron Harrison Monument at corner.

Witnesses to corner location:

Garold A. Sime, R.L.S.

John Kenworthy

Brian Forsythe



O = LOCATION CORNER  
T 16 N R 1 W  
WISCONSIN

SURVEY CONTROL ORDER

Horizontal \_\_\_\_\_  
Vertical \_\_\_\_\_

WISCONSIN COORDINATE SYSTEM

Corner	East (X)	North (Y)	Elevation (Z)	Zone
Control Sta. Name				

City, Village or Town of Wilton

County of Monroe