

U.S. PUBLIC LAND SURVEY MONUMENT RECORD

HISTORY OF CORNER ESTABLISHMENT SINCE THE ORIGINAL GOVERNMENT SURVEY
SEE PREVIOUS TIE SHEET.

DESCRIPTION OF CORNER EVIDENCE FOUND

FOUND 2.5" IRON PIPE AS SET BY GARY DECHANT, VERIFIED EXISTING TIES AND TOOK NEW TIES AS SHOWN.

CREW/WITNESS FOR CORNER LOCATION

- CHRISTIAN J. RUNNING
- LEIGH A. RUNNING

FIELD WORK COMPLETED 10/18/2023

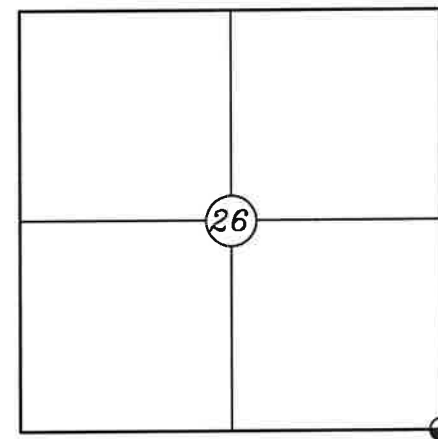
I, CHRISTIAN J. RUNNING RLS 2558, HEREBY CERTIFY THAT THE COORDINATES PROVIDED ON THIS RECORD WERE DETERMINED BY ME OR UNDER MY DIRECT SUPERVISION AND THAT THIS FORM IS CORRECT TO THE BEST OF MY KNOWLEDGE AND BELIEF.

CHRISTIAN J. RUNNING
PLS 2558
RUNNING LAND SURVEYING
700 DAUPHIN ST.
LA CROSSE, WI 54603

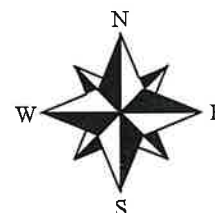
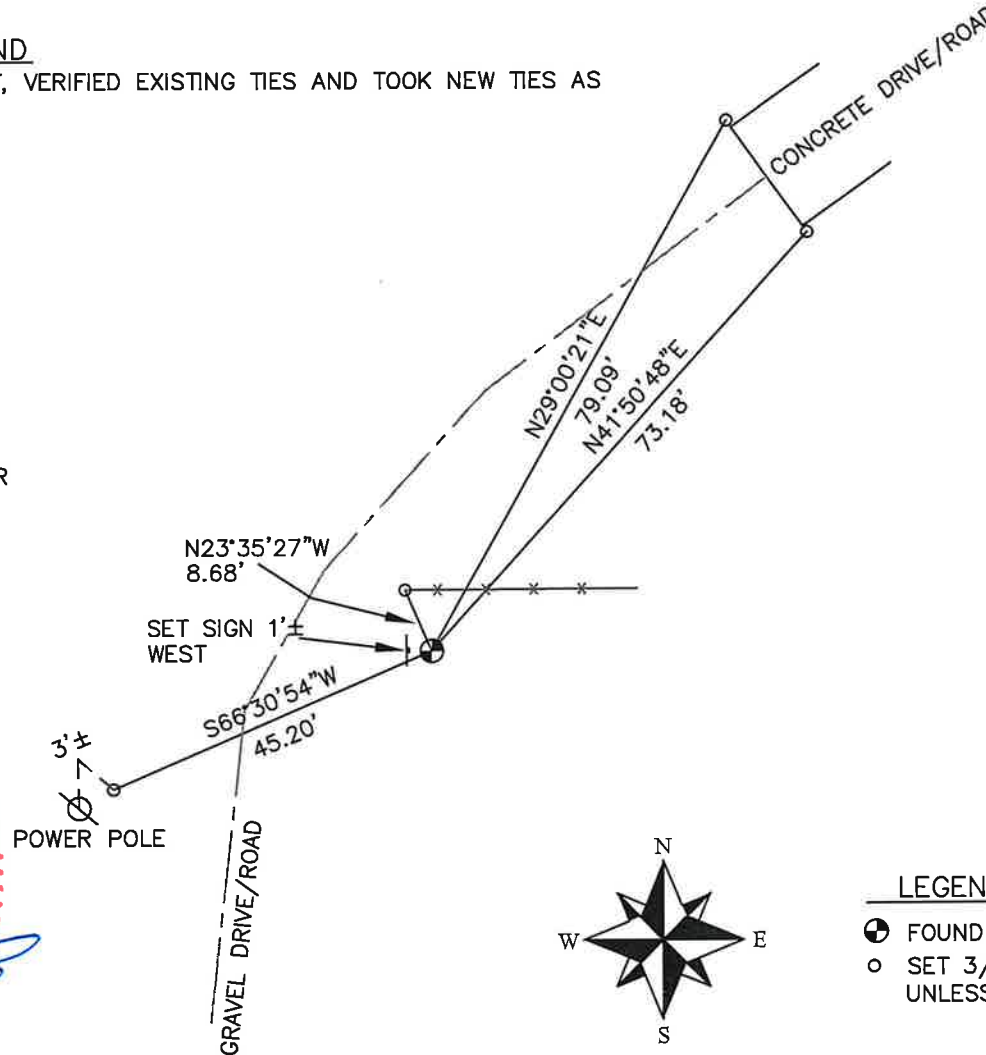


MONROE COUNTY COORDINATES NAD 83(2011)
NORTHING: 337193.3092
EASTING: 720677.3765

SECTION 26, T16N, R1W,
TOWN OF WILTON
MONROE COUNTY
WISCONSIN.



● CORNER LOCATION



NOT TO SCALE

LEGEND

- FOUND 2.5" IRON PIPE
- SET 3/4" X 18" IRON BAR 1.5 LB/FT UNLESS NOTED

ALL BEARINGS ARE REFERENCED TO THE MONROE COUNTY COORDINATE SYSTEM NAD 83(2011)

I, William C. Jung, do hereby certify that on the 24th day of October 19 77, I found (evidence) (~~no evidence~~) of the S.E. Cor. corner of Section 26, T 16 N, R 1 W Fourth Principal Meridian, and I re-established said corner according to the Wisconsin Statutes as shown and described hereon.

Dated this 14th day of Nov. 1977.

William C. Jung, R.L.S. 1323

Crew Chief, County Surveyor's
Title
 Office

History of original corner establishment:

Hamilton La Rue was at this corner in 1897.

Description of corner evidence found:

Accepted an old fence corner location as the best available evidence. This location agrees also with the 1919 U.S.G.S. map, and with present aerial photographs.

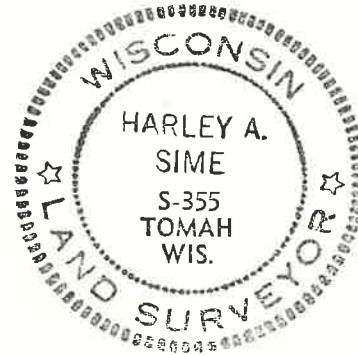
Description of corner and witness monuments, references and accessories used to perpetuate the original or re-established location of this corner:

Set 2½" x 7' iron pipe.

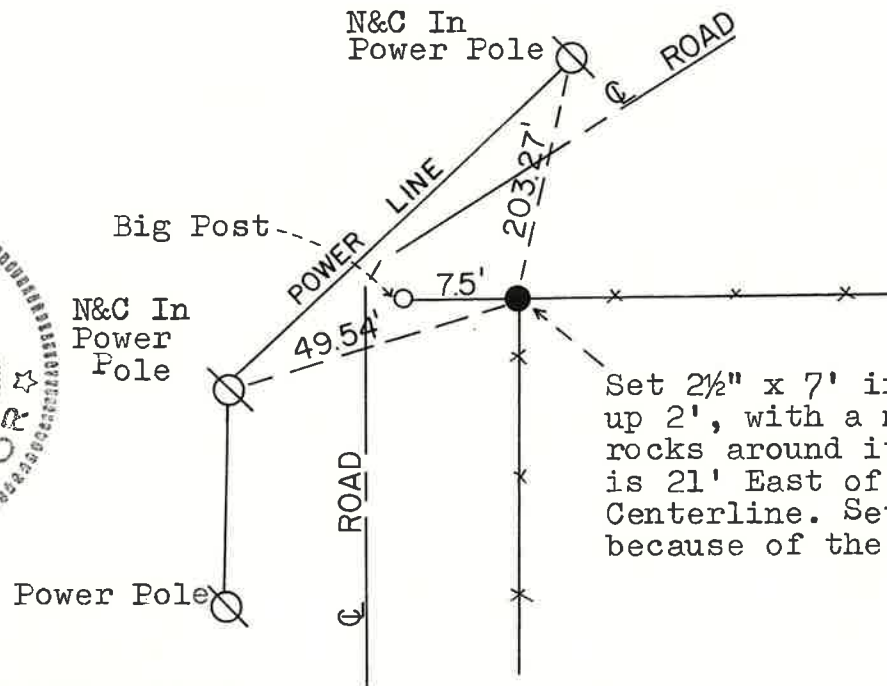
Witnesses to corner location:

W.C. Jung

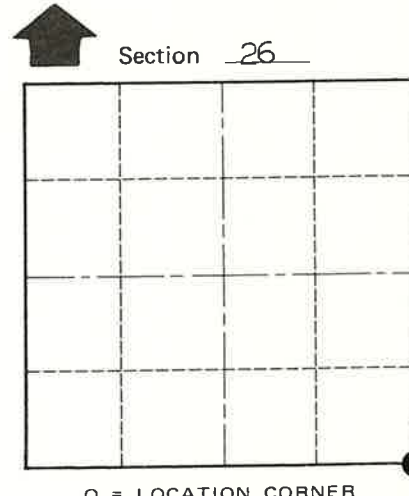
G. Dechant



Approved: Harley Sime
 County Surveyor



Set 2½" x 7' iron pipe, up 2', with a mound of rocks around it. Corner is 21' East of Road Centerline. Set an iron pipe because of the marshy ground.



T 16 N R 1 W

WISCONSIN

COUNTY SURVEYOR FORM NO. 1

SURVEY CONTROL ORDER

Horizontal	
Vertical	Scaled Elev.

WISCONSIN COORDINATE SYSTEM

Corner	East (X)	North (Y)	Elevation (Z)	Zone
Control Sta. Name			1100' ±	

City, Village or Town Wilton

County of Monroe