

U.S. PUBLIC LAND SURVEY MONUMENT RECORD

ROMPORTL #21601200020

HISTORY OF CORNER ESTABLISHMENT SINCE THE ORIGINAL GOVERNMENT SURVEY
SEE PREVIOUS TIE SHEET.

DESCRIPTION OF CORNER EVIDENCE FOUND
FOUND HARRISON AS SET BY GARY SIME, VERIFIED EXISTING TIES AND TOOK NEW TIES AS SHOWN.

CREW/WITNESS FOR CORNER LOCATION
-CHRISTIAN J. RUNNING
-LEIGH A. RUNNING

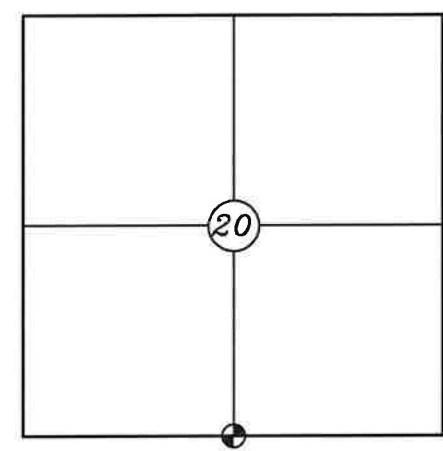
FIELD WORK COMPLETED 10/17/2023

I, CHRISTIAN J. RUNNING RLS 2558, HEREBY CERTIFY THAT THE COORDINATES PROVIDED ON THIS RECORD WERE DETERMINED BY ME OR UNDER MY DIRECT SUPERVISION AND THAT THIS FORM IS CORRECT TO THE BEST OF MY KNOWLEDGE AND BELIEF.

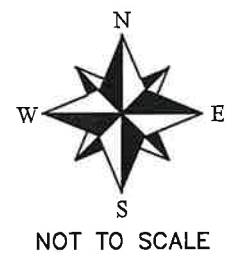
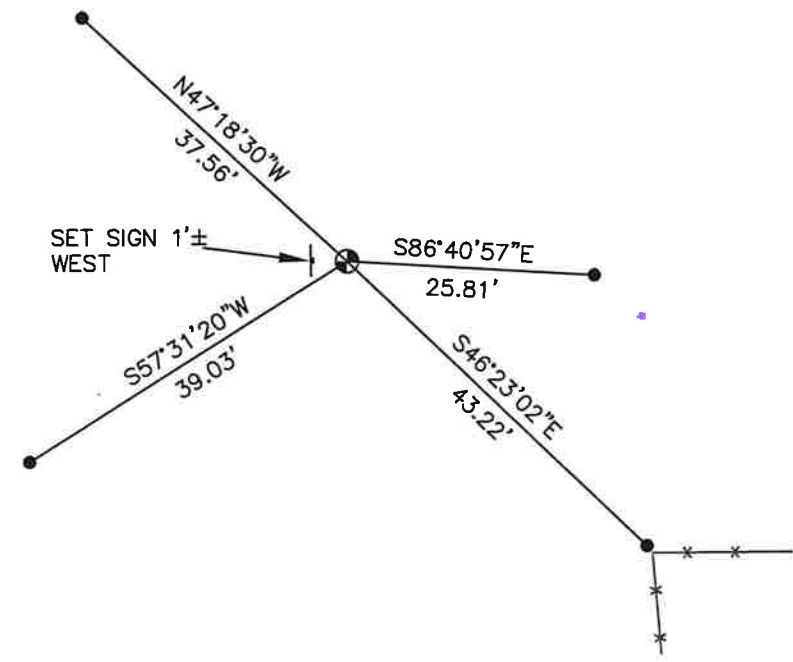
CHRISTIAN J. RUNNING
PLS 2558
RUNNING LAND SURVEYING
700 DAUPHIN ST.
LA CROSSE, WI 54603



SECTION 20, T16N, R1W,
TOWN OF WILTON
MONROE COUNTY
WISCONSIN.



● CORNER LOCATION



NOT TO SCALE

LEGEND

- FOUND HARRISON
- EXISTING 1" IRON PIPE TIE

ALL BEARINGS ARE REFERENCED TO THE MONROE COUNTY COORDINATE SYSTEM NAD 83(2011)

MONROE COUNTY COORDINATES NAD 83(2011)
NORTHING: 342329.8291
EASTING: 702135.5294

I, Garold A. Sime, do hereby certify that on the 24th day of April 19 91, I found ~~(evidence)~~ (no evidence) of the N $\frac{1}{4}$ corner of Section 29, T 16 N, R 1 W Fourth Principal Meridian, and I re-established said corner according to the Wisconsin Statutes as shown and described hereon.

Dated this 15th day of Aug. 19 91.

Garold A. Sime

Monroe County Surveyor
Title

History of corner establishment since Original Government Survey
No history recorded since the Original Government Survey.

Description of corner evidence found:

I established this corner on line and equidistant between existing section corners.

COUNTY SURVEYOR FORM NO. 1

Description of corner and witness monuments, references and accessories used to perpetuate the original or re-established location of this corner:

Set cast iron Harrison Monument at corner.
Set Guard sign next to Harrison.

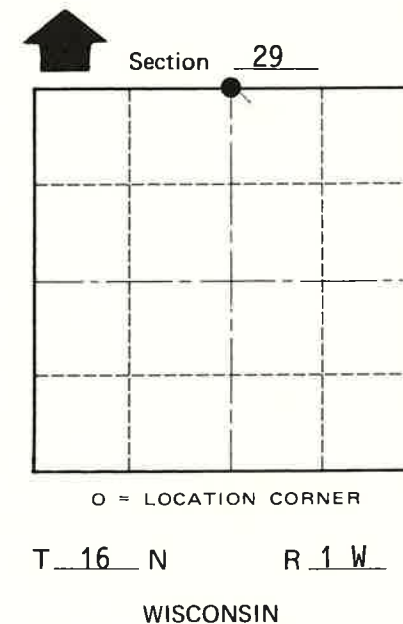
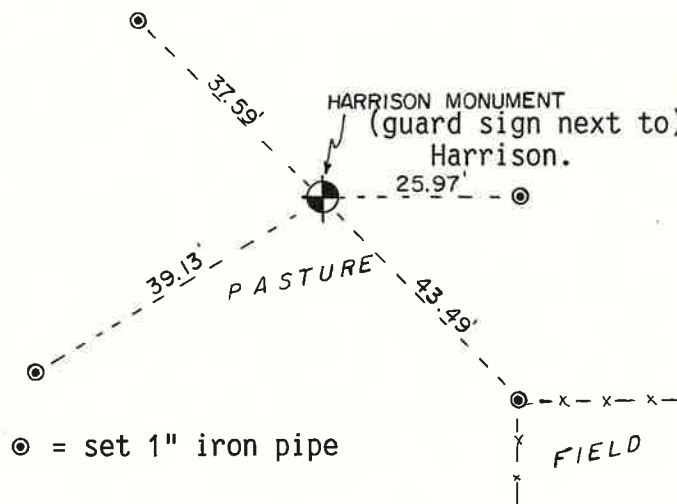
Witnesses to corner location:

Garold A. Sime, R.L.S.

John Kenworthy

Brian Forsythe

Brent Kostka



SURVEY CONTROL ORDER

Horizontal	_____
Vertical	_____

WISCONSIN COORDINATE SYSTEM

Corner	East (X)	North (Y)	Elevation (Z)	Zone
Control Sta. Name				

City, Village or Town of Wilton
County of Monroe