

U.S. PUBLIC LAND SURVEY MONUMENT RECORD

#92

ROMPORTL #21601190020

HISTORY OF CORNER ESTABLISHMENT SINCE THE ORIGINAL GOVERNMENT SURVEY
SEE PREVIOUS TIE SHEET.

DESCRIPTION OF CORNER EVIDENCE FOUND
FOUND HARRISON AS SET BY DOUGLAS MALLIET, VERIFIED EXISTING TIES AND TOOK NEW TIES AS SHOWN.

CREW/WITNESS FOR CORNER LOCATION
-CHRISTIAN J. RUNNING
-LEIGH A. RUNNING

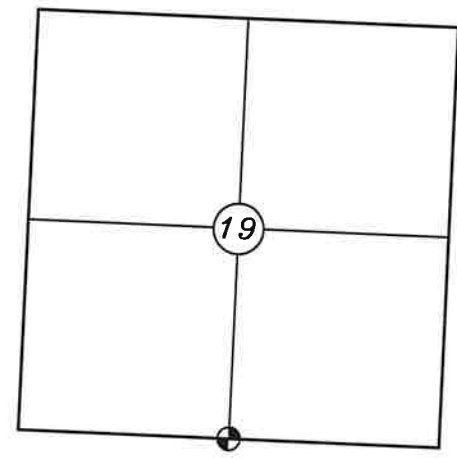
FIELD WORK COMPLETED 10/17/2023

I, CHRISTIAN J. RUNNING RLS 2558, HEREBY CERTIFY THAT THE COORDINATES PROVIDED ON THIS RECORD WERE DETERMINED BY ME OR UNDER MY DIRECT SUPERVISION AND THAT THIS FORM IS CORRECT TO THE BEST OF MY KNOWLEDGE AND BELIEF.

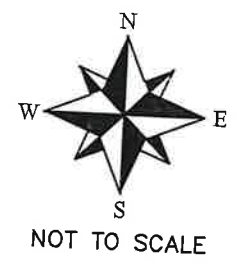
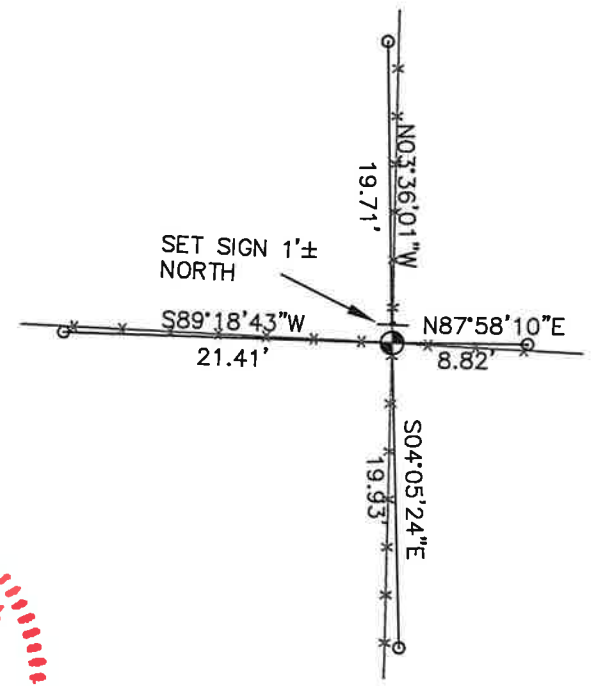
CHRISTIAN J. RUNNING
PLS 2558
RUNNING LAND SURVEYING
700 DAUPHIN ST.
LA CROSSE, WI 54603



SECTION 19, T16N, R1W,
TOWN OF WILTON
MONROE COUNTY
WISCONSIN.



● CORNER LOCATION



- LEGEND
- FOUND HARRISON
 - SET 3/4" X 18" IRON BAR 1.5 LB/FT UNLESS NOTED

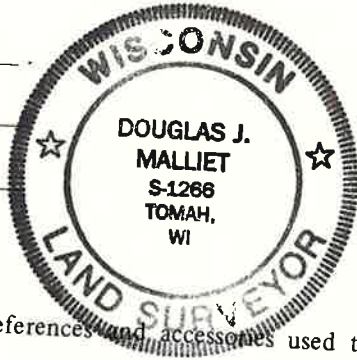
ALL BEARINGS ARE REFERENCED TO THE MONROE COUNTY COORDINATE SYSTEM NAD 83(2011)

MONROE COUNTY COORDINATES NAD 83(2011)
NORTHING: 342336.3638
EASTING: 696895.6331

I, Douglas J. Malliet, do hereby certify that on the 22nd day of July 1997, I found ~~(no evidence)~~ (no evidence) of the North Quarter corner of Section 30, T 16 N, R 1 W Fourth Principal Meridian, and I re-established said corner according to the Wisconsin Statutes as shown and described hereon.

Dated this 27th day of March 1998.

Douglas J. Malliet
 Douglas J. Malliet
 Registered Land Surveyor S-1266
 Title



History of corner establishment since Original Government Survey

I believe W. Kenyon visited and monumented this corner on 22 June 1895. He set a post and established two bearing trees.

Description of corner evidence found:

I found an existing fence corner of occupation, with fence running East, South and West. Kenyon's bearing trees of record were gone. Accepted the existing fence corner as the best available evidence.

COUNTY SURVEYOR FORM NO. 1

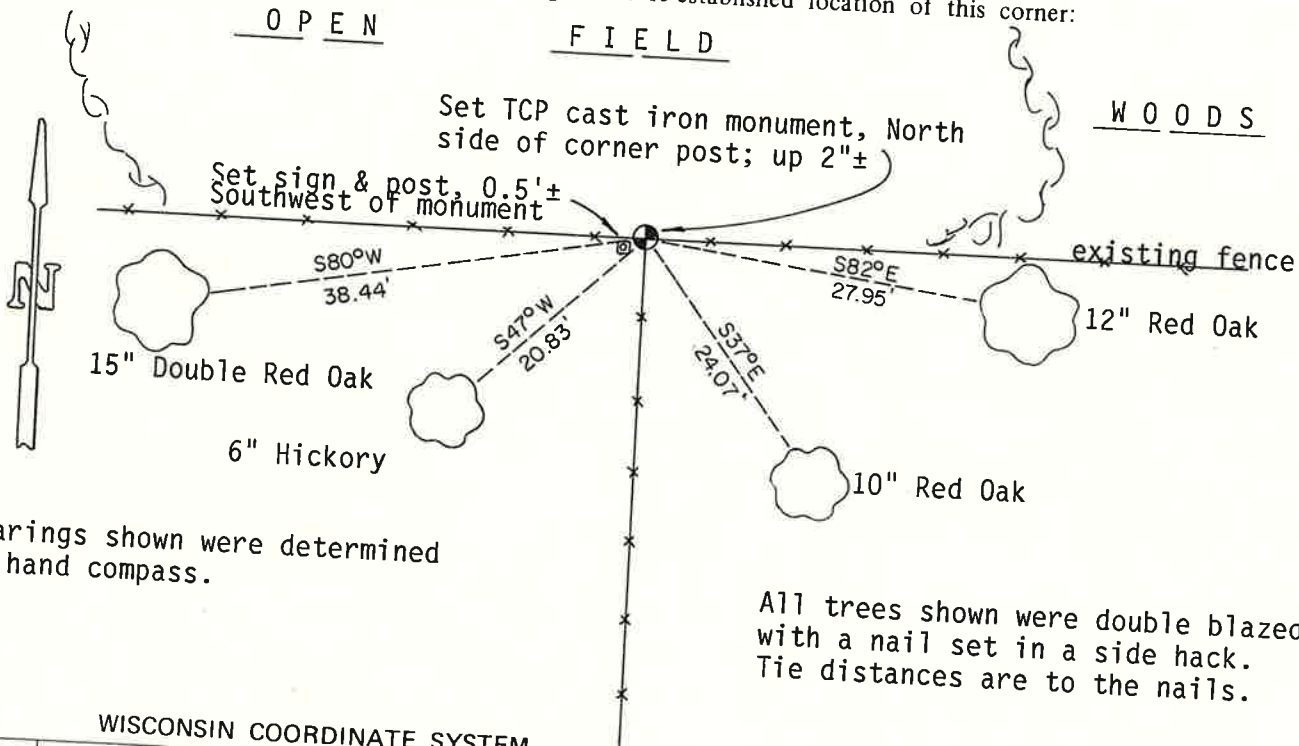
Description of corner and witness monuments, references and accessories used to perpetuate the original or re-established location of this corner:

Witnesses to corner location:

Douglas J. Malliet, RLS

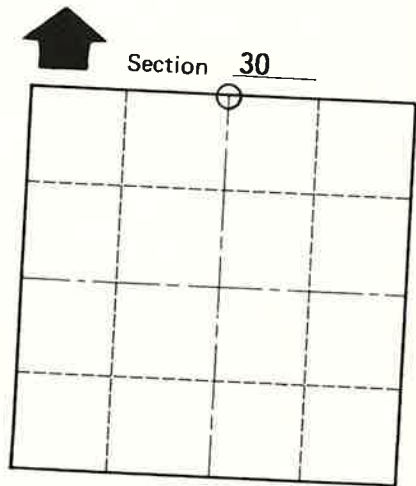
Bryan H. Meyer, RLS

Garold A. Sime, RLS



Bearings shown were determined by hand compass.

All trees shown were double blazed with a nail set in a side hack. Tie distances are to the nails.



O = LOCATION CORNER

T 16 N R 1 W

WISCONSIN

SURVEY CONTROL ORDER

Horizontal	_____
Vertical	_____

WISCONSIN COORDINATE SYSTEM				
Corner	East (X)	North (Y)	Elevation (Z)	Zone
Control Sta. Name				

~~XXXXXX~~ Town of WILTON

County of MONROE