

# U.S. PUBLIC LAND SURVEY MONUMENT RECORD

HISTORY OF CORNER ESTABLISHMENT SINCE THE ORIGINAL GOVERNMENT SURVEY  
SEE PREVIOUS TIE SHEET.

DESCRIPTION OF CORNER EVIDENCE FOUND  
FOUND HARRISON AS SET BY BILL JUNG, VERIFIED EXISTING TIES AND TOOK NEW TIES AS SHOWN.

CREW/WITNESS FOR CORNER LOCATION  
-CHRISTIAN J. RUNNING  
-LEIGH A. RUNNING

FIELD WORK COMPLETED 10/17/2023

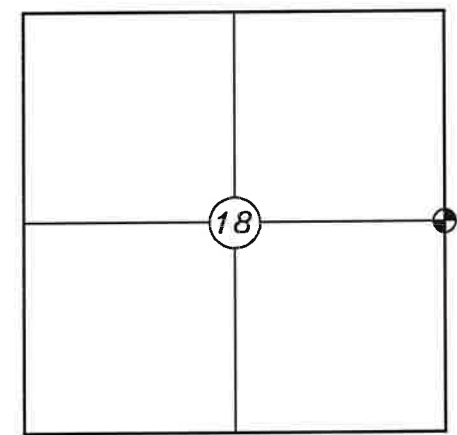
I, CHRISTIAN J. RUNNING RLS 2558, HEREBY CERTIFY THAT THE COORDINATES PROVIDED ON THIS RECORD WERE DETERMINED BY ME OR UNDER MY DIRECT SUPERVISION AND THAT THIS FORM IS CORRECT TO THE BEST OF MY KNOWLEDGE AND BELIEF.

CHRISTIAN J. RUNNING  
PLS 2558  
RUNNING LAND SURVEYING  
700 DAUPHIN ST.  
LA CROSSE, WI 54603

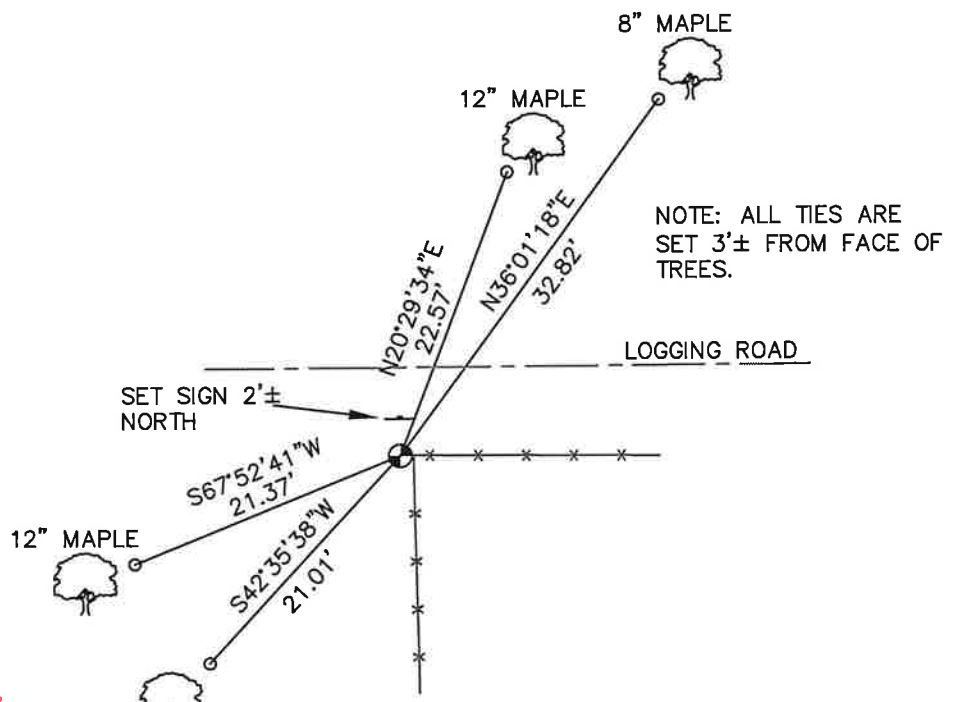


MONROE COUNTY COORDINATES NAD 83(2011)  
NORTHING: 350270.9602  
EASTING: 699536.7242

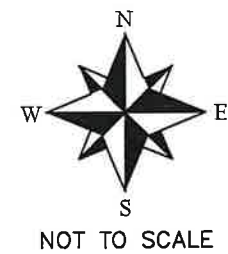
SECTION 18, T16N, R1W,  
TOWN OF WILTON  
MONROE COUNTY  
WISCONSIN.



● CORNER LOCATION



NOTE: ALL TIES ARE SET 3'± FROM FACE OF TREES.



### LEGEND

- FOUND HARRISON
- SET 3/4" X 18" IRON BAR 1.5 LB/FT UNLESS NOTED

ALL BEARINGS ARE REFERENCED TO THE MONROE COUNTY COORDINATE SYSTEM NAD 83(2011)

CERTIFICATE

CERTIFIED LAND CORNER

216011820000

No. 55

I, William C. Jung, do hereby certify that on the 9th day of August 1978, I found (evidence) ~~(no evidence)~~ of the W1/4 corner of Section 17, T 16 N, R 1 W Fourth Principal Meridian, and I re-established said corner according to the Wisconsin Statutes as shown and described hereon.

Dated this 9th day of Aug. 1978.

William C. Jung, R.L.S. 1323

Crew Chief, County Surveyor's  
Title Office

History of original corner establishment:

No known recorded history since the original government survey.

Description of corner evidence found:

Found a 3/4" iron bar set by Duke Marten in July of 1972. Replaced the iron bar with a Harrison. Marten accepted the fence corner as best available evidence.

Description of corner and witness monuments, references and accessories used to perpetuate the original or re-established location of this corner:

Witnesses to corner location:

W. Jung

B. Meyer



N&C in double blazed 8" oak

Replaced 3/4" I.B. w/Harrison up 1"

N&C in 18" Black Oak

N&C in double blazed 12" Elm

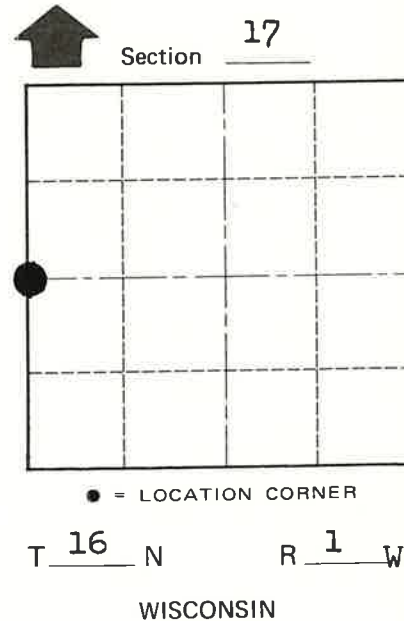
Approved by: Harley A. Sime  
County Surveyor

WISCONSIN COORDINATE SYSTEM

SURVEY CONTROL ORDER

Horizontal	_____
Vertical	_____

Corner	East (X)	North (Y)	Elevation (Z)	Zone
Control Sta. Name				



COUNTY SURVEYOR FORM NO. 1

City, Village or Town Wilton  
County of Monroe