

# U.S. PUBLIC LAND SURVEY MONUMENT RECORD

SECTION 18, T16N, R1W,  
TOWN OF WILTON  
MONROE COUNTY  
WISCONSIN.

HISTORY OF CORNER ESTABLISHMENT SINCE THE ORIGINAL GOVERNMENT SURVEY  
SEE PREVIOUS TIE SHEET.

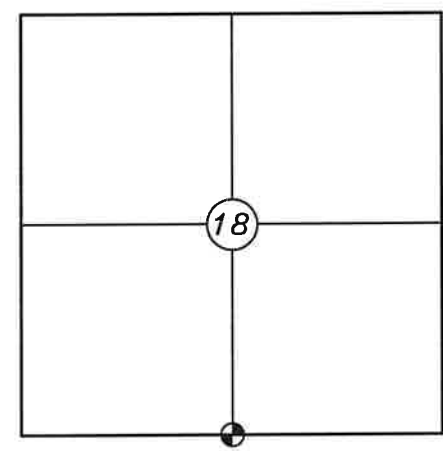
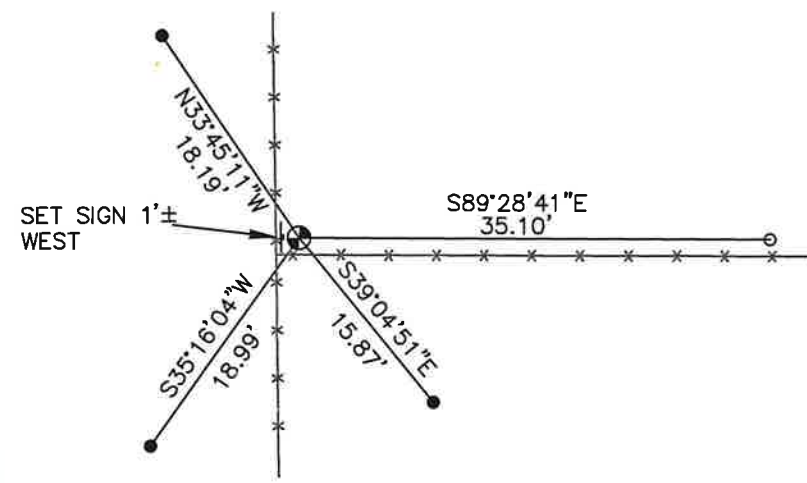
DESCRIPTION OF CORNER EVIDENCE FOUND  
FOUND HARRISON AS SET BY GARY SIME, VERIFIED EXISTING TIES AND TOOK NEW TIES AS SHOWN.

CREW/WITNESS FOR CORNER LOCATION  
-CHRISTIAN J. RUNNING  
-LEIGH A. RUNNING

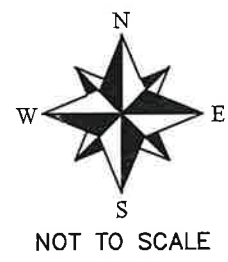
FIELD WORK COMPLETED 10/18/2023

I, CHRISTIAN J. RUNNING RLS 2558, HEREBY CERTIFY THAT THE COORDINATES PROVIDED ON THIS RECORD WERE DETERMINED BY ME OR UNDER MY DIRECT SUPERVISION AND THAT THIS FORM IS CORRECT TO THE BEST OF MY KNOWLEDGE AND BELIEF.

CHRISTIAN J. RUNNING  
PLS 2558  
RUNNING LAND SURVEYING  
700 DAUPHIN ST.  
LA CROSSE, WI 54603



● CORNER LOCATION



NOT TO SCALE

LEGEND

- FOUND HARRISON
- SET 3/4" X 18" IRON BAR 1.5 LB/FT UNLESS NOTED
- EXISTING 1" IRON PIPE TIE

ALL BEARINGS ARE REFERENCED TO THE MONROE COUNTY COORDINATE SYSTEM NAD 83(2011)

MONROE COUNTY COORDINATES NAD 83(2011)  
NORTHING: 347593.6252  
EASTING: 696904.6570

I, Garold A. Sime, do hereby certify that on the 19th day of October 1995, I found (evidence) (~~XXXXXXXX~~) of the South Quarter corner of Section 18, T 16 N, R 1 W, Fourth Principal Meridian, and I re-established said corner according to the Wisconsin Statutes as shown and described hereon.

Dated this 14th day of Dec. 1995.

Garold A. Sime

Registered Land Surveyor  
Title

**History of corner establishment since Original Government Survey**  
No history of corner establishment since the Original Government Survey

Description of corner evidence found:

Accepted the existing fence corner as the best available evidence of corner location.

COUNTY SURVEYOR FORM NO. 1

Description of corner and witness monuments, references and accessories used to perpetuate the original or re-established location of this corner:

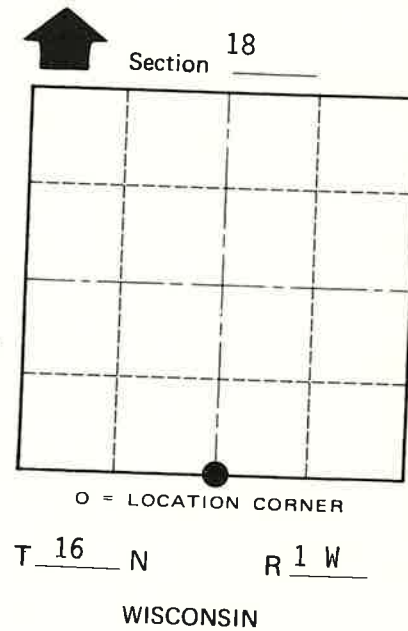
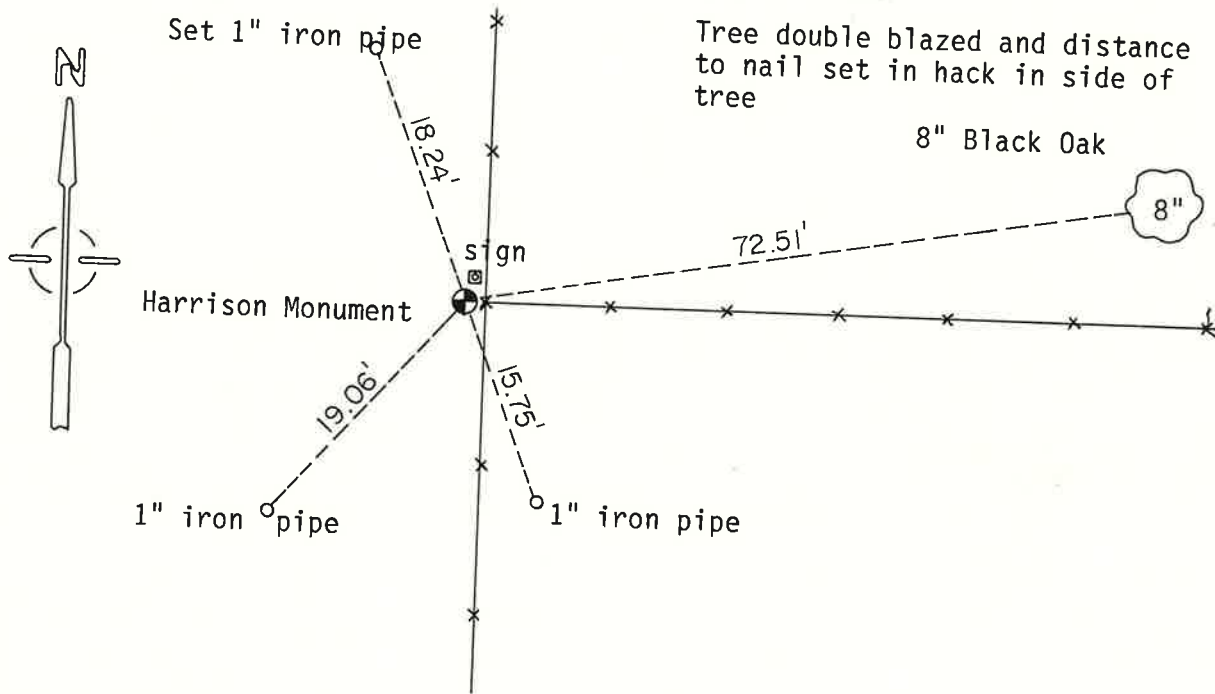
Set harrison Monument at corner  
Set guard sign next to harrison.

Witnesses to corner location:

Garold A. Sime, R.L.S.

Harold Haberlin (set monument)

Donald Cooper



SURVEY CONTROL ORDER

Horizontal	_____
Vertical	_____

WISCONSIN COORDINATE SYSTEM				
Corner	East (X)	North (Y)	Elevation (Z)	Zone
Control Sta. Name				

City, Village or Town XXXXXXXX of Wilton

County of Monroe