

U.S. PUBLIC LAND SURVEY MONUMENT RECORD

ROMPORTL #21601172000

HISTORY OF CORNER ESTABLISHMENT SINCE THE ORIGINAL GOVERNMENT SURVEY
SEE PREVIOUS TIE SHEET.

DESCRIPTION OF CORNER EVIDENCE FOUND

FOUND HARRISON AS SET BY GARY SIME, VERIFIED EXISTING TIES AND TOOK NEW TIES AS SHOWN.

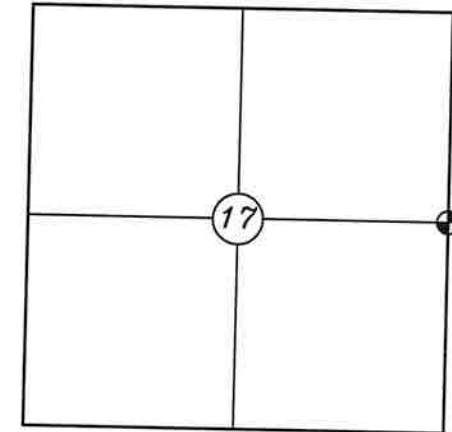
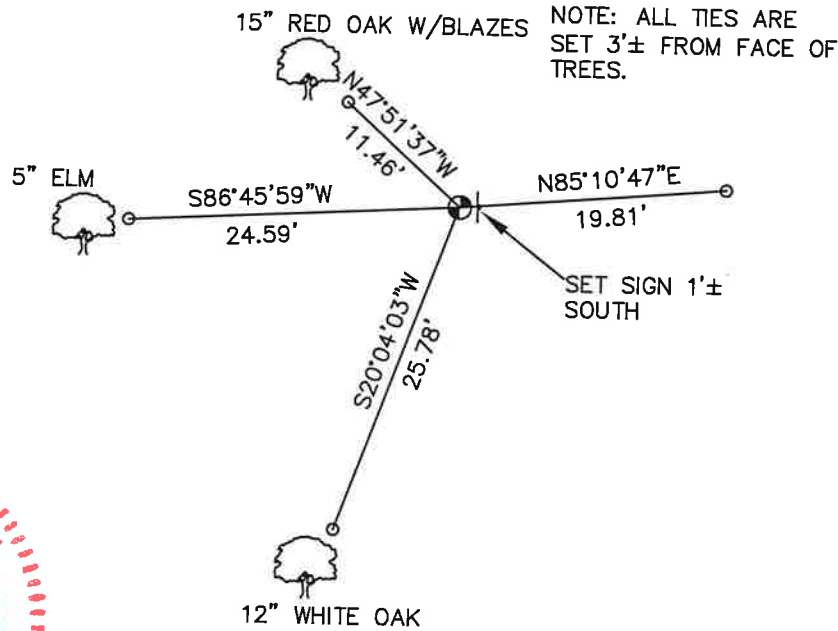
SECTION 17, T16N, R1W,
TOWN OF WILTON
MONROE COUNTY
WISCONSIN.

CREW/WITNESS FOR CORNER LOCATION
-CHRISTIAN J. RUNNING
-LEIGH A. RUNNING

FIELD WORK COMPLETED 10/18/2023

I, CHRISTIAN J. RUNNING RLS 2558, HEREBY CERTIFY THAT THE COORDINATES PROVIDED ON THIS RECORD WERE DETERMINED BY ME OR UNDER MY DIRECT SUPERVISION AND THAT THIS FORM IS CORRECT TO THE BEST OF MY KNOWLEDGE AND BELIEF.

CHRISTIAN J. RUNNING
PLS 2558
RUNNING LAND SURVEYING
700 DAUPHIN ST.
LA CROSSE, WI 54603



● CORNER LOCATION



LEGEND

- FOUND HARRISON
- SET 3/4" X 18" IRON BAR 1.5 LB/FT UNLESS NOTED

ALL BEARINGS ARE REFERENCED TO THE MONROE COUNTY COORDINATE SYSTEM NAD 83(2011)

MONROE COUNTY COORDINATES NAD 83(2011)
NORTHING: 350195.6163
EASTING: 704729.1427

CERTIFICATE

CERTIFIED LAND CORNER

21601172000 No. 56

I, Garold A. Sime, do hereby certify that on the 31 st day of October 19 85, I found (evidence) ~~(no evidence)~~ of the E¹/₄ corner of Section 17, T 16 N, R 1 W Fourth Principal Meridian, and I re-established said corner according to the Wisconsin Statutes as shown and described hereon.

Dated this 10 day of Feb. 1986.

Garold A. Sime

Deputy County Surveyor

Title

History of corner establishment since Original Government Survey

O.R. Dahl was at this corner in June of 1869
 Duane Marten set an iron bar at this corner in July of 1972.
 William C. Jung was at this corner in March of 1978

Description of corner evidence found:

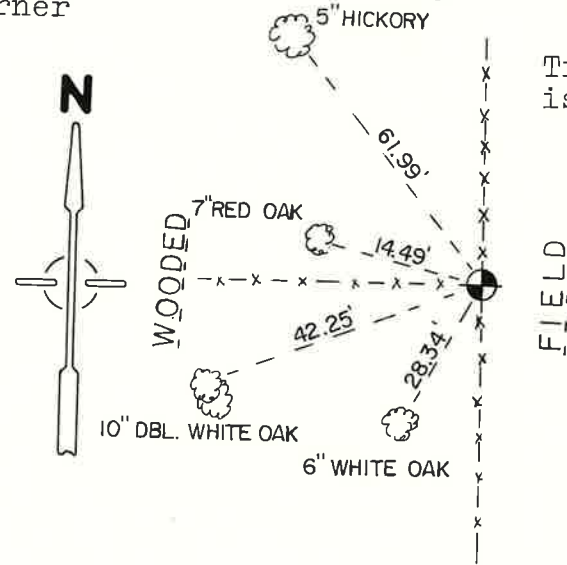
I found Martens iron bar at the fence corner and replaced same with a cast iron Harrison Monument.

Description of corner and witness monuments, references and accessories used to perpetuate the original or re-established location of this corner:
 Set Cast Iron Harrison Monument at corner

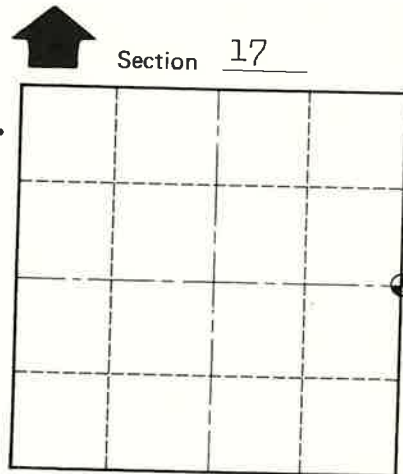
Witnesses to corner location:

Garold A. Sime, R.L.S.

Bryan H. Meyer



Trees are double blazed and distance is to nail set in hack on side of tree.



O = LOCATION CORNER

T 16 N R 1 W

WISCONSIN

SURVEY CONTROL ORDER

Horizontal	_____
Vertical	_____

WISCONSIN COORDINATE SYSTEM

Corner	East (X)	North (Y)	Elevation (Z)	Zone
Control Sta. Name				

~~City, Village~~ or Town Wilton

County of Monroe

COUNTY SURVEYOR FORM NO. 1