

# U.S. PUBLIC LAND SURVEY MONUMENT RECORD

HISTORY OF CORNER ESTABLISHMENT SINCE THE ORIGINAL GOVERNMENT SURVEY  
SEE PREVIOUS TIE SHEET.

DESCRIPTION OF CORNER EVIDENCE FOUND  
FOUND HARRISON AS SET BY BILL JUNG, LEANING DOWNHILL, PLUMBED AND PILED ROCKS AROUND IT.  
VERIFIED EXISTING TIES AND TOOK NEW TIES AS SHOWN.

SECTION 16, T16N, R1W,  
TOWN OF WILTON  
MONROE COUNTY  
WISCONSIN.

CREW/WITNESS FOR CORNER LOCATION  
-CHRISTIAN J. RUNNING  
-LEIGH A. RUNNING

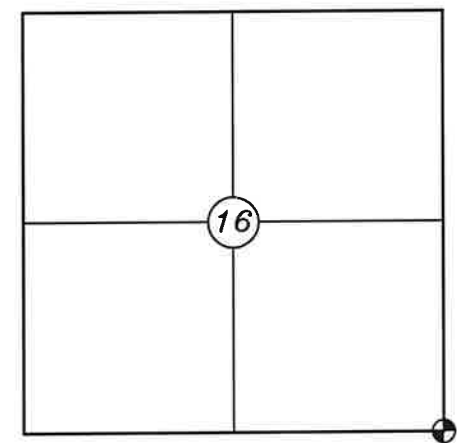
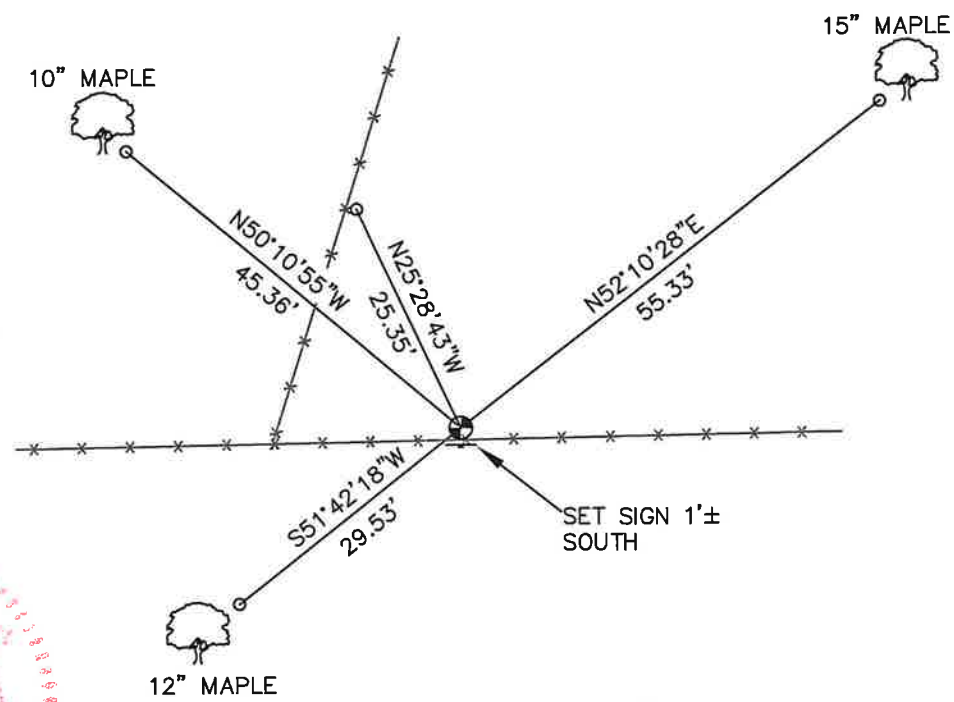
FIELD WORK COMPLETED 10/18/2023

I, CHRISTIAN J. RUNNING RLS 2558, HEREBY  
CERTIFY THAT THE COORDINATES PROVIDED ON  
THIS RECORD WERE DETERMINED BY ME OR UNDER  
MY DIRECT SUPERVISION AND THAT THIS FORM IS  
CORRECT TO THE BEST OF MY KNOWLEDGE AND  
BELIEF.

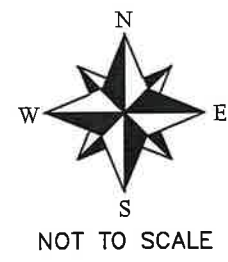
CHRISTIAN J. RUNNING  
PLS 2558  
RUNNING LAND SURVEYING  
700 DAUPHIN ST.  
LA CROSSE, WI 54603



MONROE COUNTY COORDINATES NAD 83(2011)  
NORTHING: 347629.7095  
EASTING: 710024.8572



● CORNER LOCATION



LEGEND

- FOUND HARRISON
- SET 3/4" X 18" IRON BAR 1.5 LB/FT UNLESS NOTED

ALL BEARINGS ARE REFERENCED TO  
THE MONROE COUNTY COORDINATE SYSTEM NAD 83(2011)

I, Garold A. Sime, do hereby certify that on the 17<sup>th</sup> day of November 19 86, I found (evidence) ~~(no evidence)~~ of the NW corner of Section 22, T 16 N, R 1W Fourth Principal Meridian, and I re-established said corner according to the Wisconsin Statutes as shown and described hereon.

Dated this 29<sup>th</sup> day of Dec 19 86.

Garold A. Sime

Deputy County Surveyor

Title

History of corner establishment since Original Government Survey

No known history recorded since the original government survey

Description of corner evidence found:

I accepted the intersection of the fence line to the north projected southerly to the existing east - west fence line as best available evidence

COUNTY SURVEYOR FORM NO. 1

Description of corner and witness monuments, references and accessories used to perpetuate the original or re-established location of this corner:

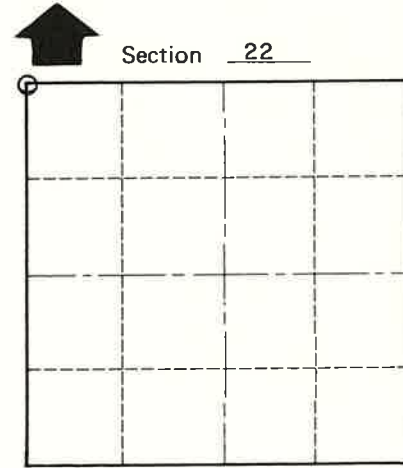
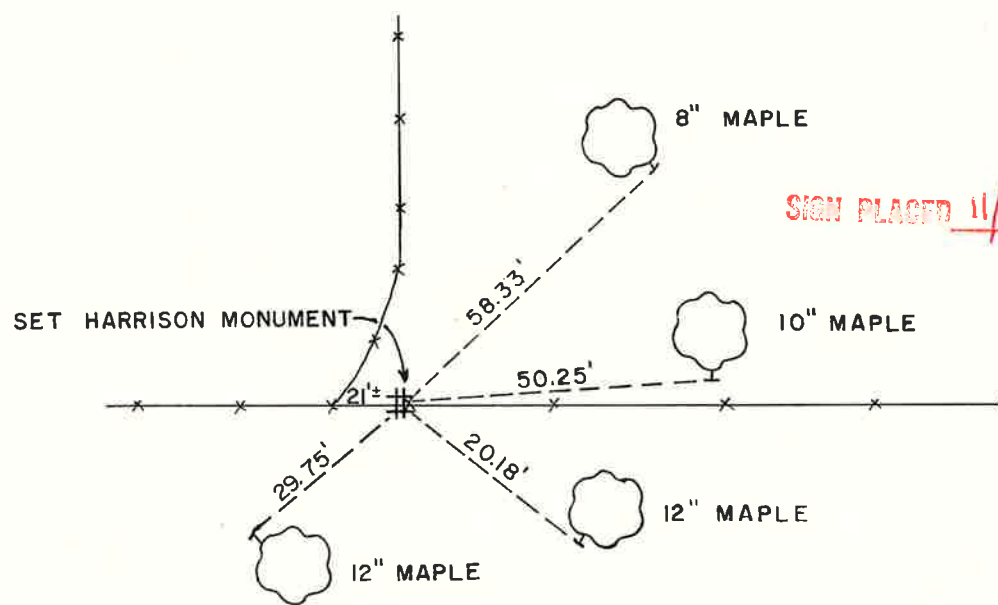
Set Harrison Monument at corner

Witnesses to corner location:

Garold A. Sime, R.L.S.

Bryan H. Meyer, R.L.S.

John Kenworthy



O = LOCATION CORNER

T 16 N R 1W  
WISCONSIN

Trees are double blazed and distances are to nail set in hack in side of tree

SURVEY CONTROL ORDER

SURVEY CONTROL ORDER		WISCONSIN COORDINATE SYSTEM			
Horizontal	Vertical	East (X)	North (Y)	Elevation (Z)	Zone
Corner					
Control Sta. Name					

City, Village or Town Wilton  
County of Monroe