

# U.S. PUBLIC LAND SURVEY MONUMENT RECORD

ROMPORTL #21601152010

HISTORY OF CORNER ESTABLISHMENT SINCE THE ORIGINAL GOVERNMENT SURVEY  
SEE PREVIOUS TIE SHEET.

DESCRIPTION OF CORNER EVIDENCE FOUND

FOUND AND ACCEPTED 3/4" IRON BAR AS SET BY BILL JUNG, VERIFIED EXISTING TIES AND TOOK NEW TIES AS SHOWN.

CREW/WITNESS FOR CORNER LOCATION  
-CHRISTIAN J. RUNNING  
-LEIGH A. RUNNING

FIELD WORK COMPLETED 10/18/2023

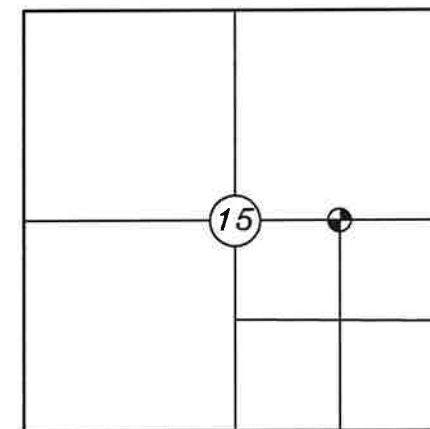
I, CHRISTIAN J. RUNNING RLS 2558, HEREBY CERTIFY THAT THE COORDINATES PROVIDED ON THIS RECORD WERE DETERMINED BY ME OR UNDER MY DIRECT SUPERVISION AND THAT THIS FORM IS CORRECT TO THE BEST OF MY KNOWLEDGE AND BELIEF.

CHRISTIAN J. RUNNING  
PLS 2558  
RUNNING LAND SURVEYING  
700 DAUPHIN ST.  
LA CROSSE, WI 54603

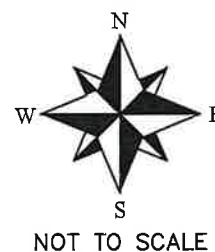
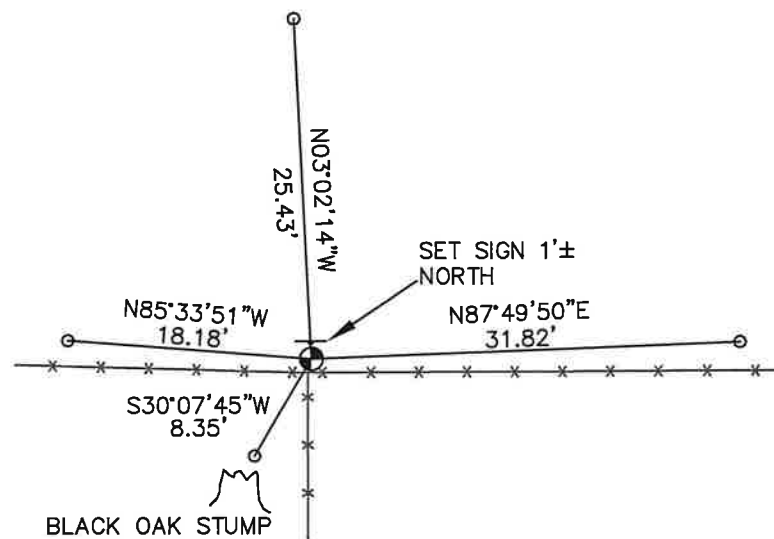


MONROE COUNTY COORDINATES NAD 83(2011)  
NORTHING: 350409.7535  
EASTING: 713988.6773

SECTION 15, T16N, R1W,  
TOWN OF WILTON  
MONROE COUNTY  
WISCONSIN.



● CORNER LOCATION



LEGEND

- FOUND 3/4" IRON BAR
- SET 3/4" X 18" IRON BAR 1.5 LB/FT UNLESS NOTED

ALL BEARINGS ARE REFERENCED TO THE MONROE COUNTY COORDINATE SYSTEM NAD 83(2011)

CERTIFICATE

I, William C. Jung, do hereby certify that on the 21st day of October 1977, I found (evidence) ~~(no evidence)~~ of the N1/8-SE1/4 corner of Section 15, T 16 N, R 1 W Fourth Principal Meridian, and I re-established said corner according to the Wisconsin Statutes as shown and described hereon.

Dated this 4th day of Nov. 1977.

William C. Jung, R.L.S. 1323

Crew Chief, County Surveyor's  
Title Office

CERTIFIED LAND CORNER

21601152010

No. 57c

History of original corner establishment:

Hamilton LaRue set this corner in January of 1897.

Description of corner evidence found:

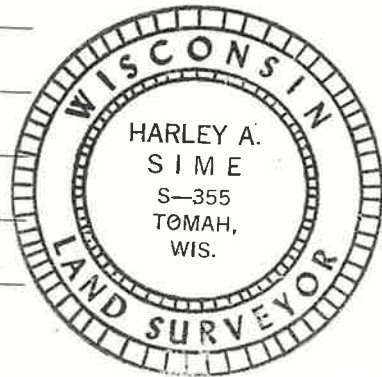
Found one of LaRue's bearing trees still standing. Reset corner after allowing for tree size and magnetic declination. As an added note however, it appears that LaRue may have set this corner too far North. I still accepted it though since it has been long used and occupied.

Description of corner and witness monuments, references and accessories used to perpetuate the original or re-established location of this corner:  
Set 3/4"x24" iron bar 2 ft. West of main brace post.

Witnesses to corner location:

W. C. Jung

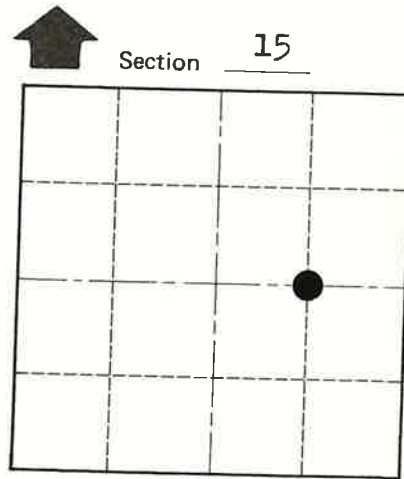
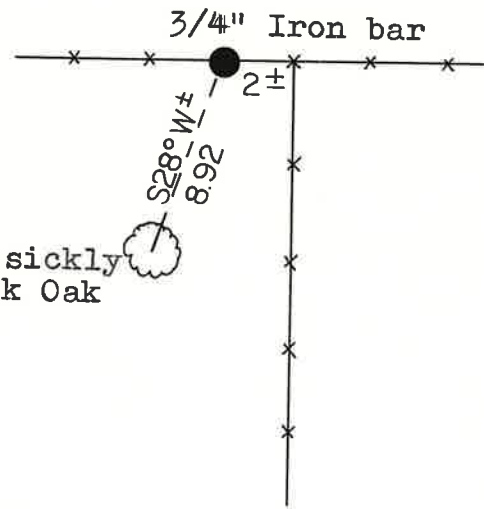
COUNTY SURVEYOR FORM NO. 1



Magnetic North



No Scale



O = LOCATION CORNER

T 16 N R 1 W

WISCONSIN

Approved: Harley Sime  
County Surveyor

SURVEY CONTROL ORDER

Horizontal	
Vertical Scaled Elev.	

WISCONSIN COORDINATE SYSTEM

Corner	East (X)	North (Y)	Elevation (Z)	Zone
Control Sta. Name			1160±	

City, Village or Town Wilton

County of Monroe