

U.S. PUBLIC LAND SURVEY MONUMENT RECORD

ROMPORTL #21601150020

HISTORY OF CORNER ESTABLISHMENT SINCE THE ORIGINAL GOVERNMENT SURVEY
SEE PREVIOUS TIE SHEET.

DESCRIPTION OF CORNER EVIDENCE FOUND

FOUND AND ACCEPTED HARRISON AS SET BY BILL JUNG, VERIFIED EXISTING TIES AND TOOK NEW TIES AS SHOWN.

SECTION 15, T16N, R1W,
TOWN OF WILTON
MONROE COUNTY
WISCONSIN.

CREW/WITNESS FOR CORNER LOCATION
-CHRISTIAN J. RUNNING
-LEIGH A. RUNNING

FIELD WORK COMPLETED 10/18/2023

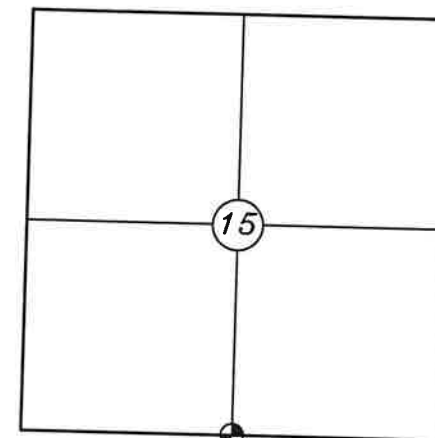
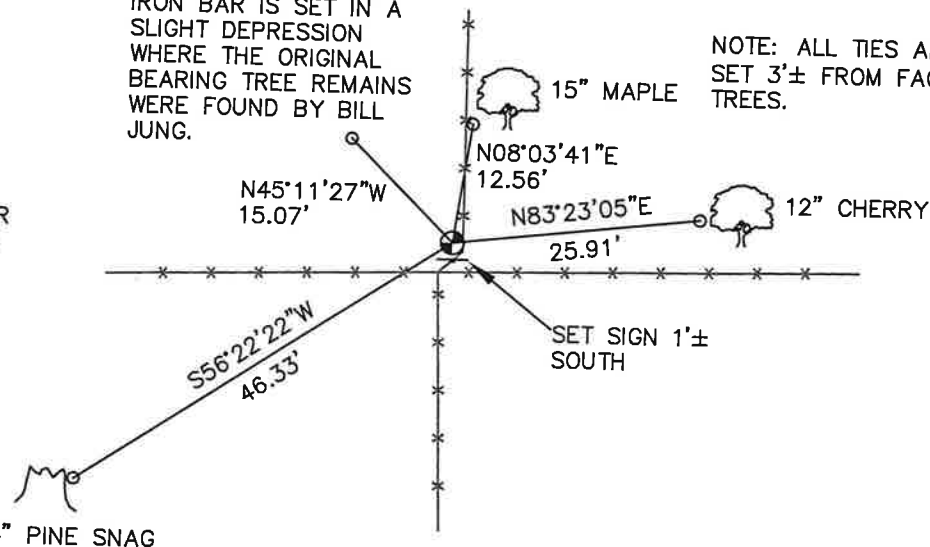
I, CHRISTIAN J. RUNNING RLS 2558, HEREBY CERTIFY THAT THE COORDINATES PROVIDED ON THIS RECORD WERE DETERMINED BY ME OR UNDER MY DIRECT SUPERVISION AND THAT THIS FORM IS CORRECT TO THE BEST OF MY KNOWLEDGE AND BELIEF.

CHRISTIAN J. RUNNING
PLS 2558
RUNNING LAND SURVEYING
700 DAUPHIN ST.
LA CROSSE, WI 54603

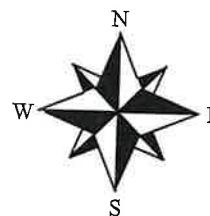


NOTE:
IRON BAR IS SET IN A SLIGHT DEPRESSION WHERE THE ORIGINAL BEARING TREE REMAINS WERE FOUND BY BILL JUNG.

NOTE: ALL TIES ARE SET 3'± FROM FACE OF TREES.



⊕ CORNER LOCATION



NOT TO SCALE

LEGEND

- ⊕ FOUND HARRISON
- SET 3/4" X 18" IRON BAR 1.5 LB/FT UNLESS NOTED

ALL BEARINGS ARE REFERENCED TO THE MONROE COUNTY COORDINATE SYSTEM NAD 83(2011)

MONROE COUNTY COORDINATES NAD 83(2011)
NORTHING: 347747.9403
EASTING: 712668.6147

I, William C. Jung, do hereby certify that on the 25th day of October 19 77, I found (evidence) (~~no evidence~~) of the S 1/4 corner of Section 15, T16 N, R 1 W, Fourth Principal Meridian, and I re-established said corner according to the Wisconsin Statutes as shown and described hereon.

Dated this 11th day of Nov. 1977.

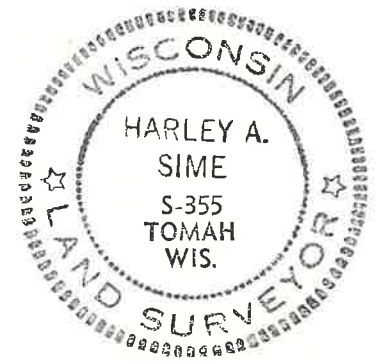
William C. Jung, R.L.S. 1323
Crew Chief, County Surveyor's
 Title Office

History of original corner establishment:

Hamilton La Rue reset this corner in 1897.

Description of corner evidence found:

Found an original government bearing tree stump. Reset the corner after allowing for tree size and magnetic declination.



COUNTY SURVEYOR FORM NO. 1

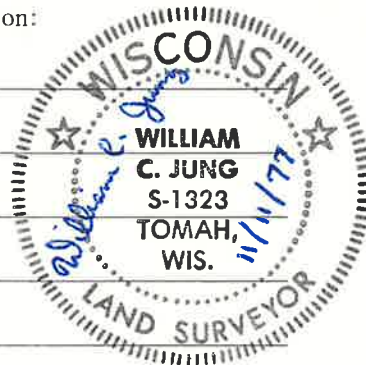
Description of corner and witness monuments, references and accessories used to perpetuate the original or re-established location of this corner:

Set a Harrison marker.

Witnesses to corner location:

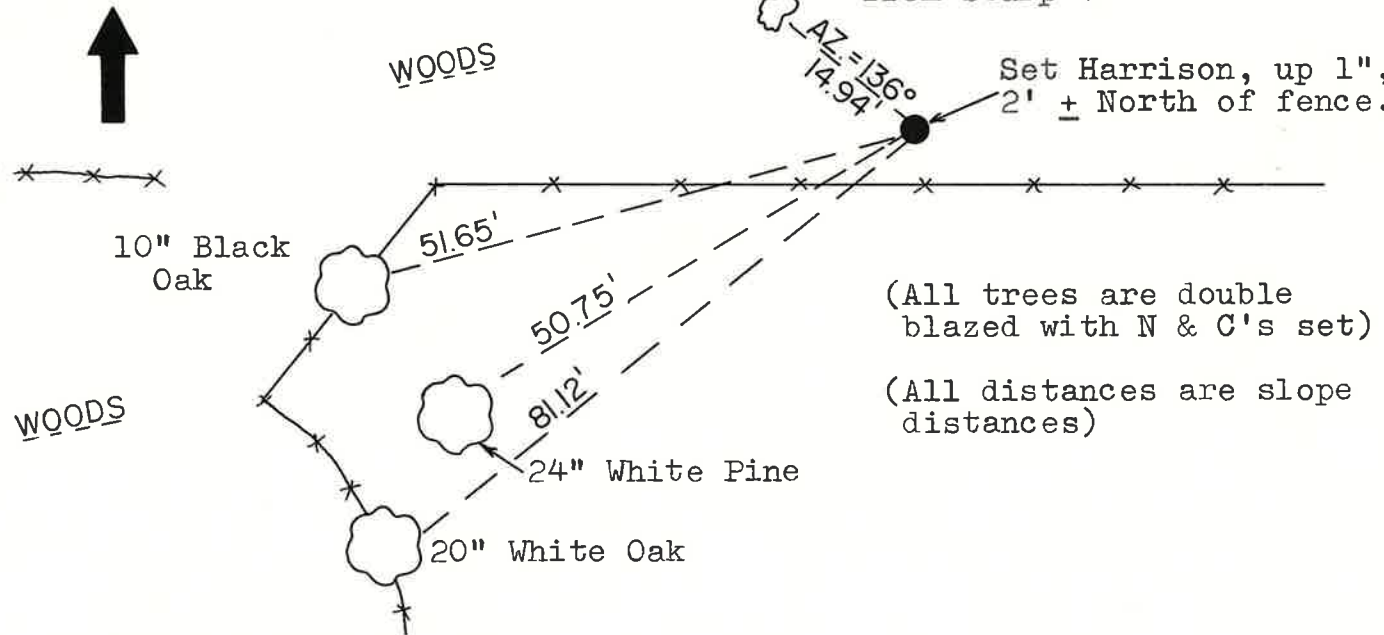
W. C. Jung

G. Dechant



Approved: Harley Sime
 County Surveyor

Magnetic North

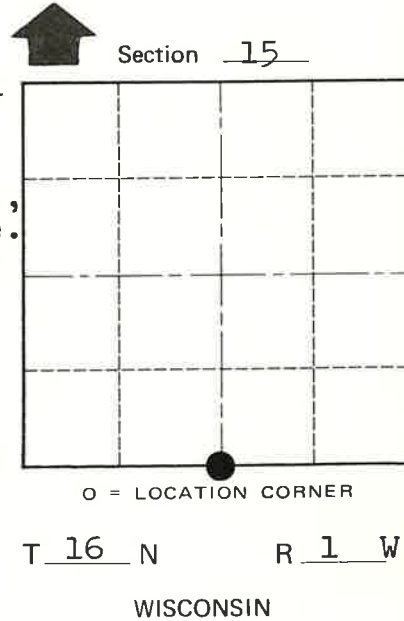


Found 3' rotted White Oak stump, cut off. Distance measured from stump center.

Set Harrison, up 1", 2' ± North of fence.

(All trees are double blazed with N & C's set)

(All distances are slope distances)



SURVEY CONTROL ORDER

Horizontal	
Vertical	Scaled Elev.

WISCONSIN COORDINATE SYSTEM

Corner	East (X)	North (Y)	Elevation (Z)	Zone
	1872444.899	677057.538	1210 ±	SOUTH
Control Sta. Name				

City, Village or Town Wilton
 County of Monroe