

U.S. PUBLIC LAND SURVEY MONUMENT RECORD

ROMPORTL #21601140020

HISTORY OF CORNER ESTABLISHMENT SINCE THE ORIGINAL GOVERNMENT SURVEY
SEE PREVIOUS TIE SHEET.

DESCRIPTION OF CORNER EVIDENCE FOUND

FOUND AND ACCEPTED TCP MONUMENT AS SET BY GARY DECHANT, VERIFIED EXISTING TIES AND TOOK NEW TIES AS SHOWN.

CREW/WITNESS FOR CORNER LOCATION
-CHRISTIAN J. RUNNING
-LEIGH A. RUNNING

FIELD WORK COMPLETED 10/18/2023

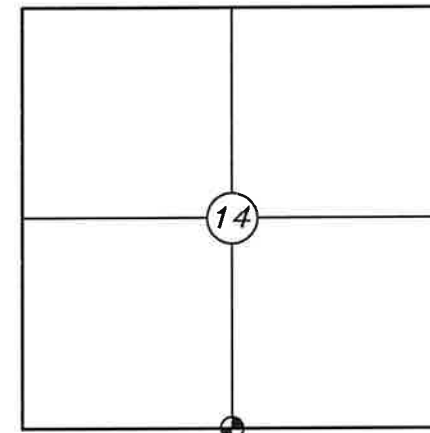
I, CHRISTIAN J. RUNNING RLS 2558, HEREBY CERTIFY THAT THE COORDINATES PROVIDED ON THIS RECORD WERE DETERMINED BY ME OR UNDER MY DIRECT SUPERVISION AND THAT THIS FORM IS CORRECT TO THE BEST OF MY KNOWLEDGE AND BELIEF.

CHRISTIAN J. RUNNING
PLS 2558
RUNNING LAND SURVEYING
700 DAUPHIN ST.
LA CROSSE, WI 54603

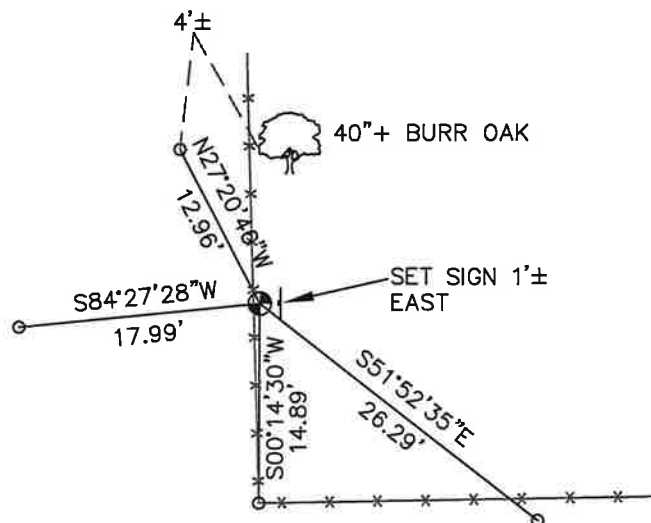


MONROE COUNTY COORDINATES NAD 83(2011)
NORTHING: 347746.7735
EASTING: 717942.8763

SECTION 14, T16N, R1W,
TOWN OF WILTON
MONROE COUNTY
WISCONSIN.



● CORNER LOCATION



LEGEND

- FOUND TCP MONUMENT
- SET 3/4" X 18" IRON BAR 1.5 LB/FT UNLESS NOTED

ALL BEARINGS ARE REFERENCED TO
THE MONROE COUNTY COORDINATE SYSTEM NAD 83(2011)

U.S. PUBLIC LAND SURVEY MONUMENT RECORD

I hereby certify that on the 11 Day of
September 2008, I found (evidence)
(no evidence) of the N1/4

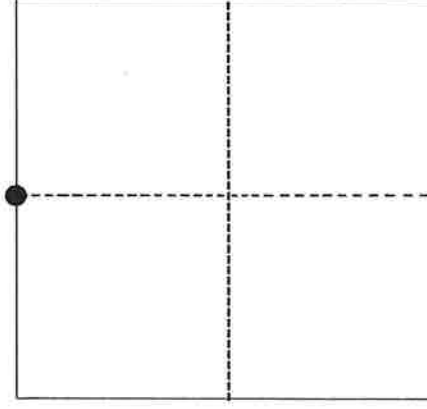
SECTION 23

corner of Section 23
Fourth Principle Meridian and established said
corner according to the Wisconsin Statutes.

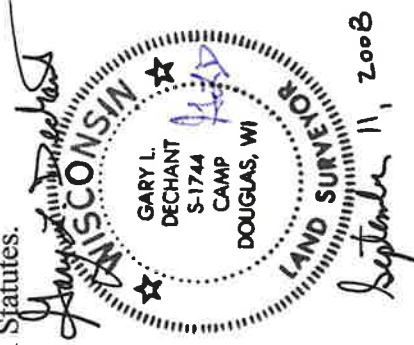
Witnesses to corner location:

Christi L. Dechant

Gary L. Dechant



● = CORNER LOCATION
T 16 N - R 1 W
Town of Wilton



HISTORY OF CORNER:

O.R. Dahl was here in June of 1869.

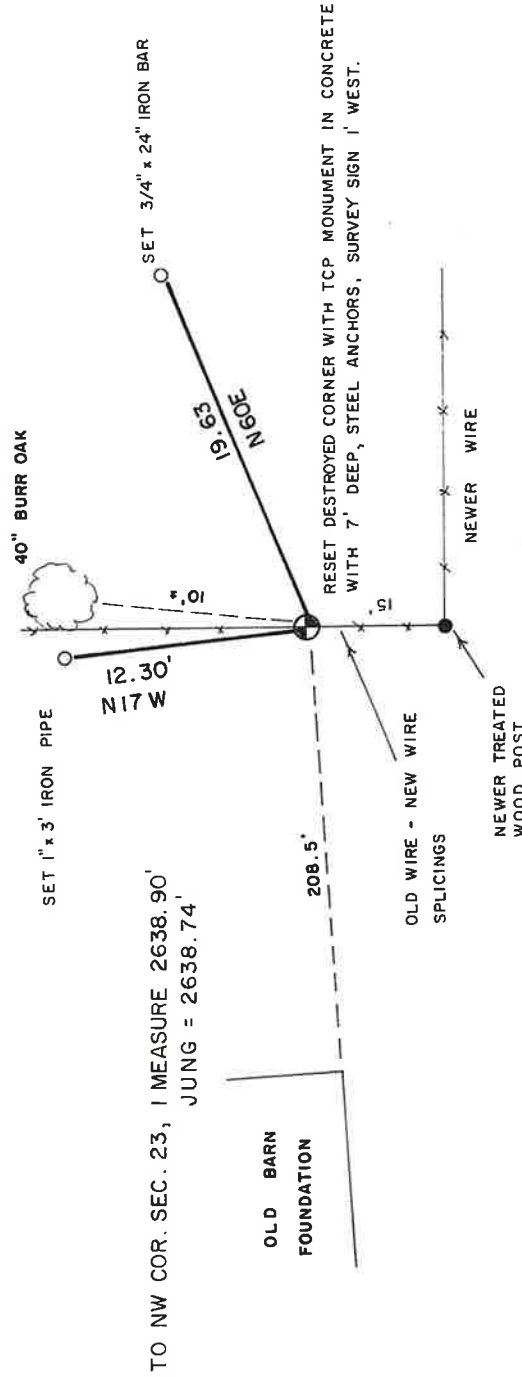
W. Jung accepted an old fence corner as the corner in November 4, 1977 and set a Harrison Monument.

DESCRIPTION OF CORNER EVIDENCE FOUND:

The Harrison Monument that Jung had set was gone, as well as his 1" reference pipe 33 feet east. The fence corner has also been moved 15 feet farther south.

I reset the corner with a TCP monument from survey points of mine for surveys I did in Section 14 in 2003 and Section 24 in 1989. Fits Jung's remaining ties very well.

DESCRIPTION OF CORNER AND REFERENCE MARKERS:



64 (2)
21601140020

I, William C. Jung, do hereby certify that on the 27th day of October 1977, I found (evidence) ~~(no evidence)~~ of the South 1/4 corner of Section 14, T 16 N, R 1 W, Fourth Principal Meridian, and I re-established said corner according to the Wisconsin Statutes as shown and described hereon.

Dated this 4th day of Nov. 19 77.

William C. Jung, R.L.S. 1323

Crew Chief, County Surveyor's
Title Office

History of original corner establishment:

O. R. Dahl was at this corner in June of 1869.

Description of corner evidence found:

Accepted an old fence corner as the best available evidence.
Fits original government notes very well.

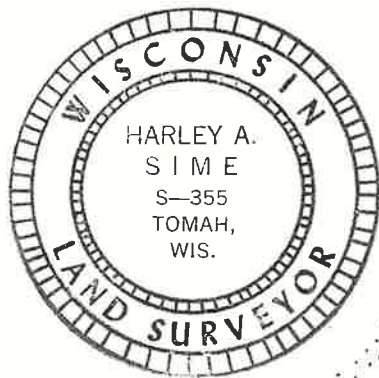
Description of corner and witness monuments, references and accessories used to perpetuate the original or re-established location of this corner:

Set a Harrison marker under a mound of rocks.

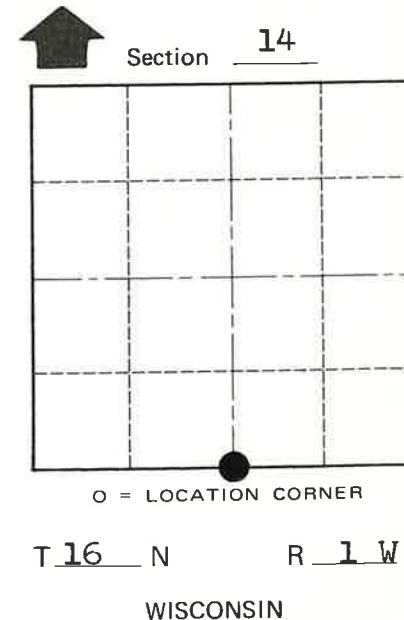
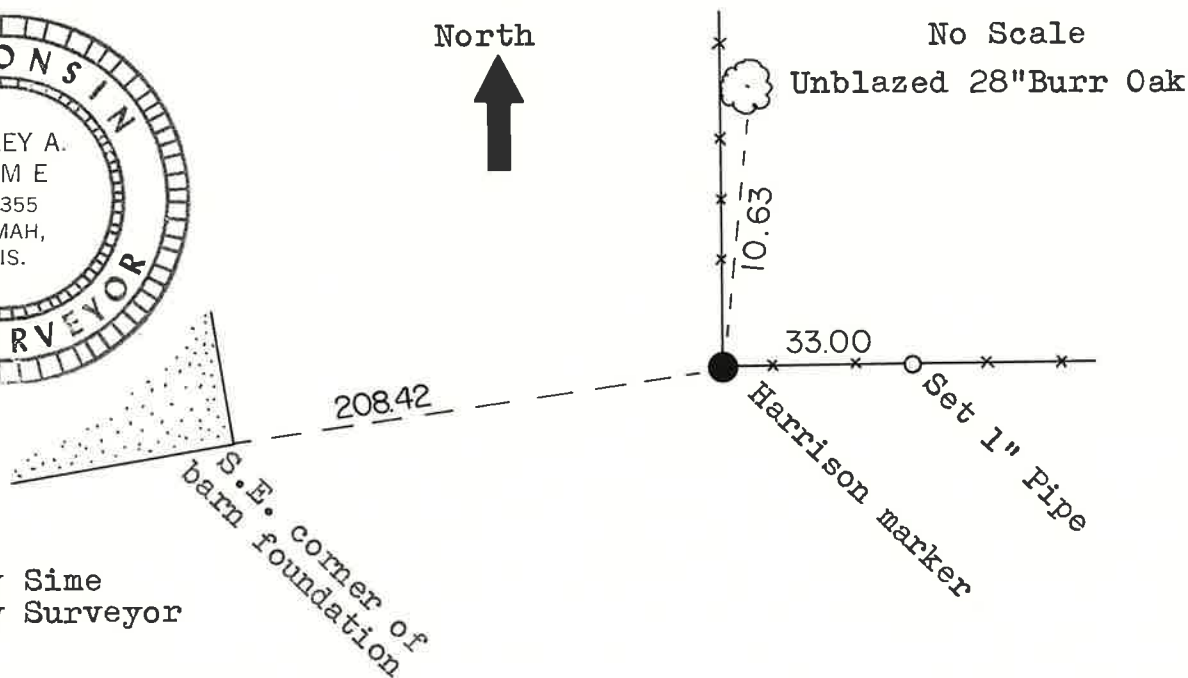
Witnesses to corner location:

W.C. Jung

G. Dechant



North



COUNTY SURVEYOR FORM NO. 1

SURVEY CONTROL ORDER

Horizontal _____
Vertical Scaled Elev.

Approved: Harley Sime
County Surveyor

WISCONSIN COORDINATE SYSTEM

Corner	East (X)	North (Y)	Elevation (Z)	Zone
	<u>1877718.393</u>	<u>677015.480</u>	<u>1130+</u>	<u>SOUTH</u>
Control Sta. Name				

City, Village or Town Wilton
County of Monroe