

U.S. PUBLIC LAND SURVEY MONUMENT RECORD

HISTORY OF CORNER ESTABLISHMENT SINCE THE ORIGINAL GOVERNMENT SURVEY
SEE PREVIOUS TIE SHEET.

DESCRIPTION OF CORNER EVIDENCE FOUND

FOUND AND ACCEPTED HARRISON AS SET BY GARY SIME, VERIFIED EXISTING TIES AND TOOK NEW TIES AS SHOWN.

CREW/WITNESS FOR CORNER LOCATION
-CHRISTIAN J. RUNNING
-LEIGH A. RUNNING

FIELD WORK COMPLETED 10/17/2023

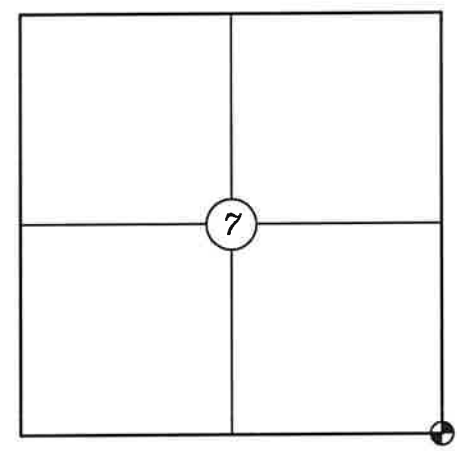
I, CHRISTIAN J. RUNNING RLS 2558, HEREBY CERTIFY THAT THE COORDINATES PROVIDED ON THIS RECORD WERE DETERMINED BY ME OR UNDER MY DIRECT SUPERVISION AND THAT THIS FORM IS CORRECT TO THE BEST OF MY KNOWLEDGE AND BELIEF.

CHRISTIAN J. RUNNING
PLS 2558
RUNNING LAND SURVEYING
700 DAUPHIN ST.
LA CROSSE, WI 54603

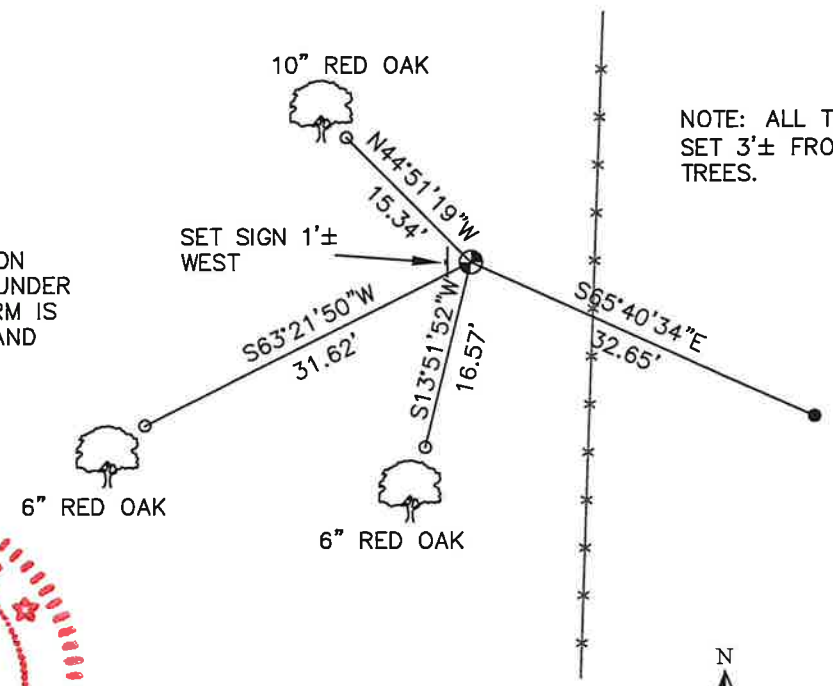


MONROE COUNTY COORDINATES NAD 83(2011)
NORTHING: 352833.5490
EASTING: 699523.1581

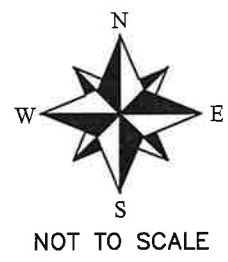
SECTION 7, T16N, R1W,
TOWN OF WILTON
MONROE COUNTY
WISCONSIN.



● CORNER LOCATION



NOTE: ALL TIES ARE SET 3'± FROM FACE OF TREES.



LEGEND

- FOUND HARRISON
- SET 3/4" X 18" IRON BAR 1.5 LB/FT UNLESS NOTED

ALL BEARINGS ARE REFERENCED TO THE MONROE COUNTY COORDINATE SYSTEM NAD 83(2011)

I, Garold A. Sime, do hereby certify that on the 31st day of October 1985, I found ~~(evidence)~~ (no evidence) of the NW corner of Section 17, T. 16 N, R. 1W Fourth Principal Meridian, and I re-established said corner according to the Wisconsin Statutes as shown and described hereon.

Dated this 10 day of Feb. 1986.

Garold A. Sime
Deputy County Surveyor
Title

History of corner establishment since Original Government Survey

Fred Holden was at this corner in March of 1902 and in April of 1907

Description of corner evidence found:

I set this corner on line and equidistant from the W¹/₄ corner of said Sec.17 thru the occupied Northwest corner of the SW¹/₄-NW¹/₄ of said Sec.17.

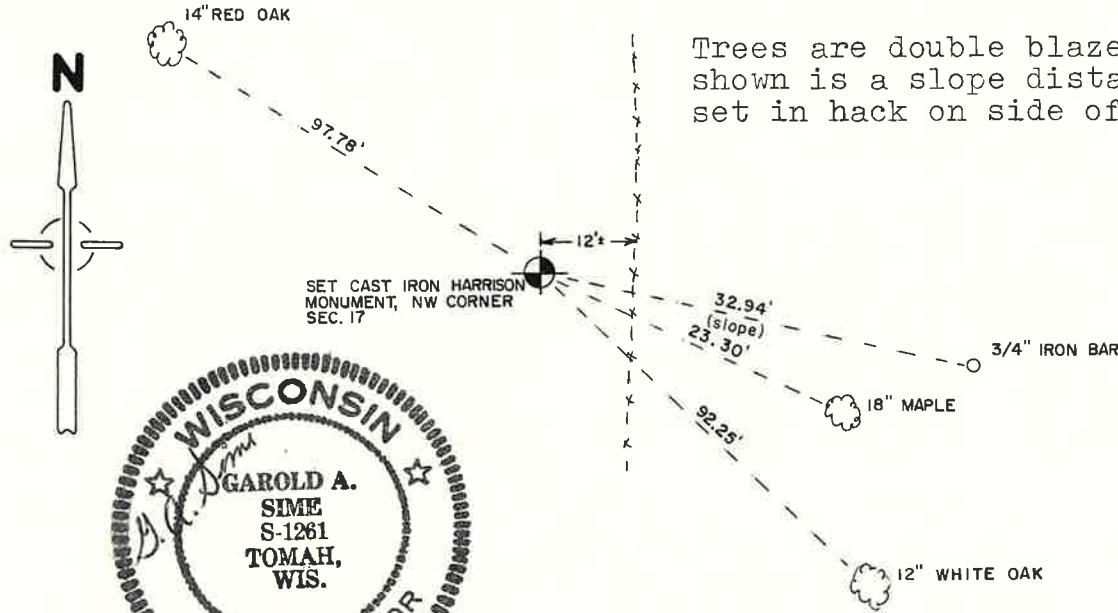
COUNTY SURVEYOR FORM NO. 1

Description of corner and witness monuments, references and accessories used to perpetuate the original or re-established location of this corner:

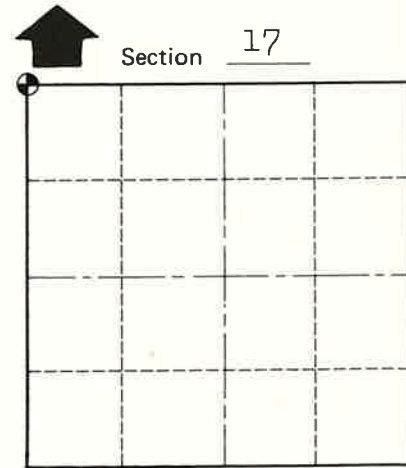
Witnesses to corner location:

Garold A. Sime, R.L.S.

Bryan H. Meyer, R.L.S.



Trees are double blazed and distance shown is a slope distance to a nail set in hack on side of tree.



O = LOCATION CORNER

T 16 N R 1W

WISCONSIN



WISCONSIN COORDINATE SYSTEM

SURVEY CONTROL ORDER

Horizontal	_____
Vertical	_____

Corner	East (X)	North (Y)	Elevation (Z)	Zone
Control Sta. Name				

City, Village or Town of Wilton
County of Monroe