

U.S. PUBLIC LAND SURVEY MONUMENT RECORD

HISTORY OF CORNER ESTABLISHMENT SINCE THE ORIGINAL GOVERNMENT SURVEY
SEE PREVIOUS TIE SHEET.

DESCRIPTION OF CORNER EVIDENCE FOUND
FOUND AND ACCEPTED HARRISON AS SET BY BRYAN MEYER, VERIFIED EXISTING TIES AND TOOK NEW TIES AS SHOWN.

CREW/WITNESS FOR CORNER LOCATION
-CHRISTIAN J. RUNNING
-LEIGH A. RUNNING

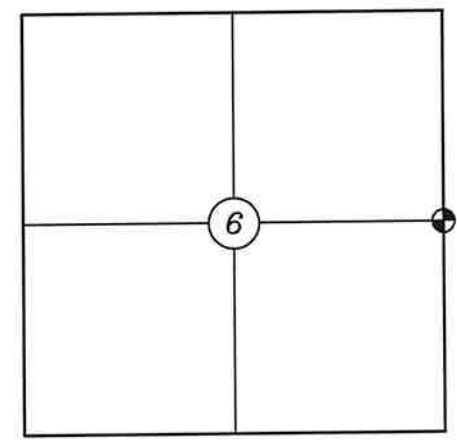
FIELD WORK COMPLETED 10/17/2023

I, CHRISTIAN J. RUNNING RLS 2558, HEREBY CERTIFY THAT THE COORDINATES PROVIDED ON THIS RECORD WERE DETERMINED BY ME OR UNDER MY DIRECT SUPERVISION AND THAT THIS FORM IS CORRECT TO THE BEST OF MY KNOWLEDGE AND BELIEF.

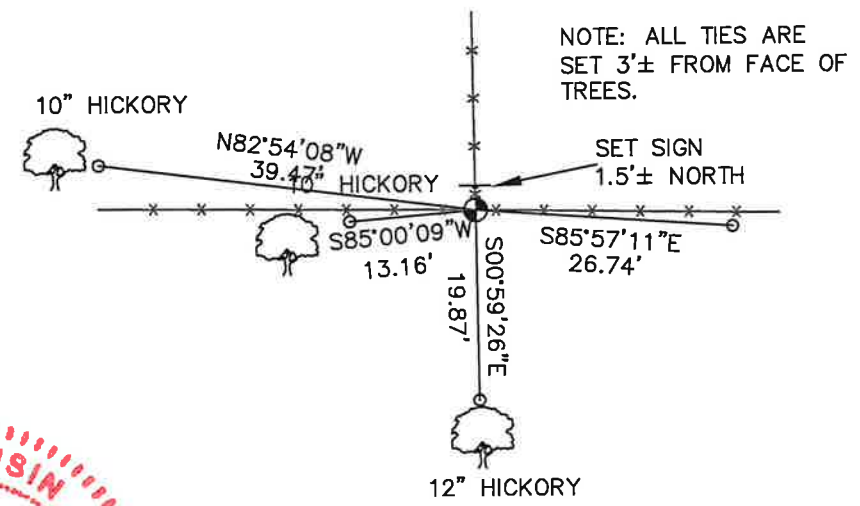
CHRISTIAN J. RUNNING
PLS 2558
RUNNING LAND SURVEYING
700 DAUPHIN ST.
LA CROSSE, WI 54603



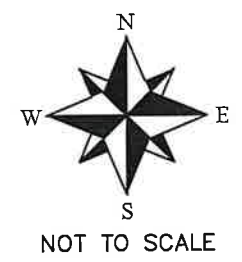
SECTION 6, T16N, R1W,
TOWN OF WILTON
MONROE COUNTY
WISCONSIN.



⊙ CORNER LOCATION



NOTE: ALL TIES ARE SET 3'± FROM FACE OF TREES.



NOT TO SCALE

LEGEND

- ⊙ FOUND HARRISON MONUMENT
- SET 3/4" X 18" IRON BAR 1.5 LB/FT UNLESS NOTED

ALL BEARINGS ARE REFERENCED TO THE MONROE COUNTY COORDINATE SYSTEM NAD 83(2011)

MONROE COUNTY COORDINATES NAD 83(2011)
NORTHING: 360725.3477
EASTING: 699449.0181

I, Harley A. Sime do hereby certify that on the twenty-fourth day of February 1982, I found (evidence) ~~the evidence~~ of the West $\frac{1}{4}$ corner of Section 5, T 16 N, R 1 W Fourth Principal Meridian, and I re-established said corner according to the Wisconsin Statutes as shown and described hereon.

Dated this 16th day of March 1982.

Harley A. Sime - R. L. S. 355

County Surveyor, Monroe County, Wisconsin

Title

**Approved: HARLEY A. SIME
MONROE CO. SURVEYOR**

Description of corner and witness monuments, references and accessories used to perpetuate the original or re-established location of this corner:

History of corner establishment since Original Government Survey
O. R. Dahl was here in June of 1868.
Fred Holden was here in April of 1907.

Description of corner evidence found:

Accepted 3 way fence corner as the best available evidence. Note: In Dahl's survey of 1868, he surveyed the Southwest $\frac{1}{4}$ of Section 5. It appears that the center $\frac{1}{4}$ corner was set in an irregular manner. Also the N-S and E-W lines of the Southwest $\frac{1}{4}$ are within minutes of being parallel.

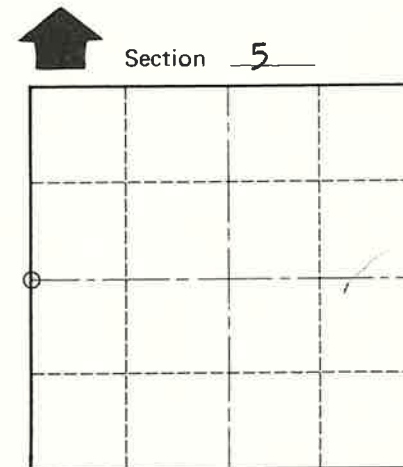
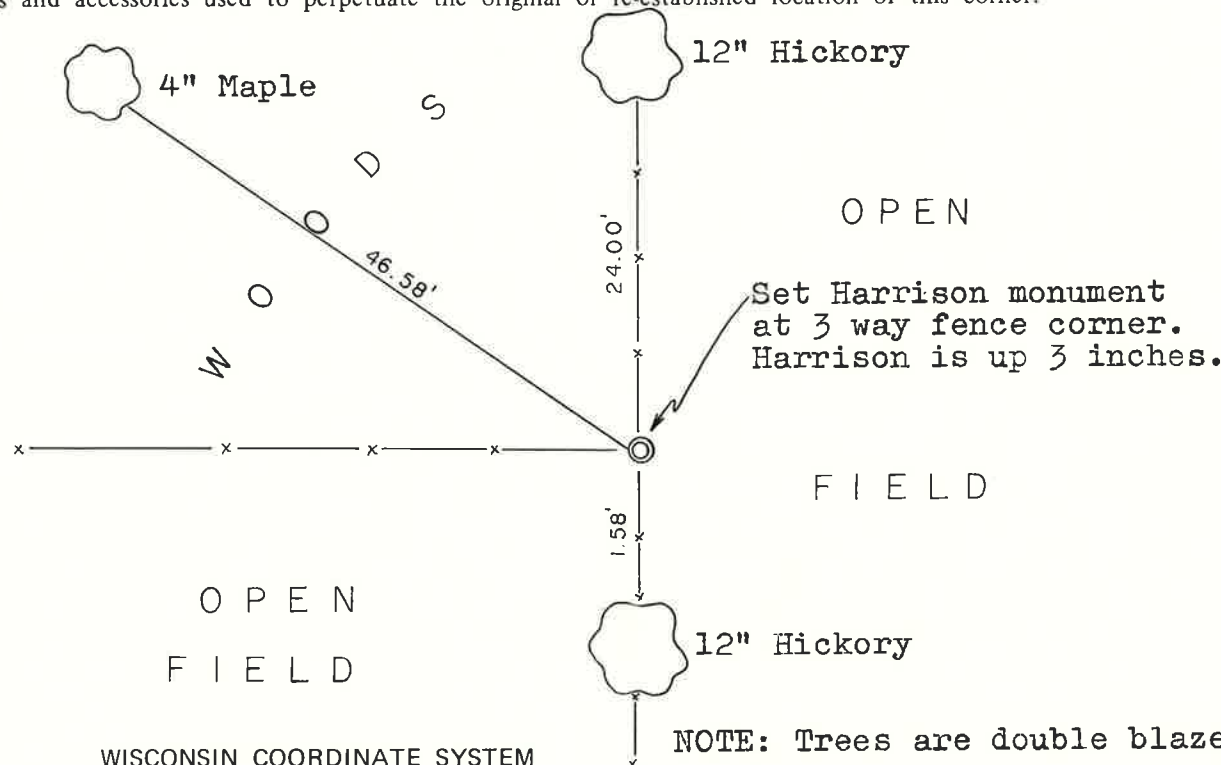


COUNTY SURVEYOR FORM NO. 2

Witnesses to corner location:

Bryan Meyer

Gary Dechant



O = LOCATION CORNER

T 16 N R 1 W
WISCONSIN

SURVEY CONTROL ORDER

Horizontal	_____
Vertical	_____

WISCONSIN COORDINATE SYSTEM

Corner	East (X)	North (Y)	Elevation (Z)	Zone
Control Sta. Name				

NOTE: Trees are double blazed only.

~~City, Village or~~ Town of Wilton

County of Monroe