

U.S. PUBLIC LAND SURVEY MONUMENT RECORD

ROMPORTL #21601050020

HISTORY OF CORNER ESTABLISHMENT SINCE THE ORIGINAL GOVERNMENT SURVEY
SEE PREVIOUS TIE SHEET.

**SECTION 5, T16N, R1W,
TOWN OF WILTON
MONROE COUNTY
WISCONSIN.**

DESCRIPTION OF CORNER EVIDENCE FOUND

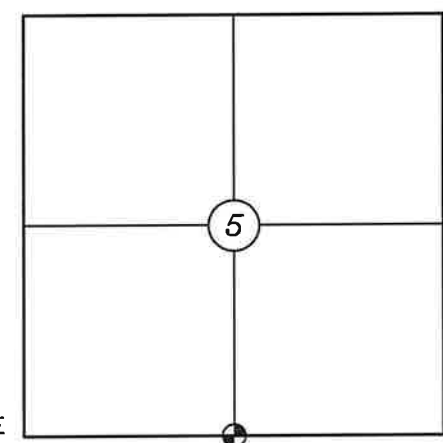
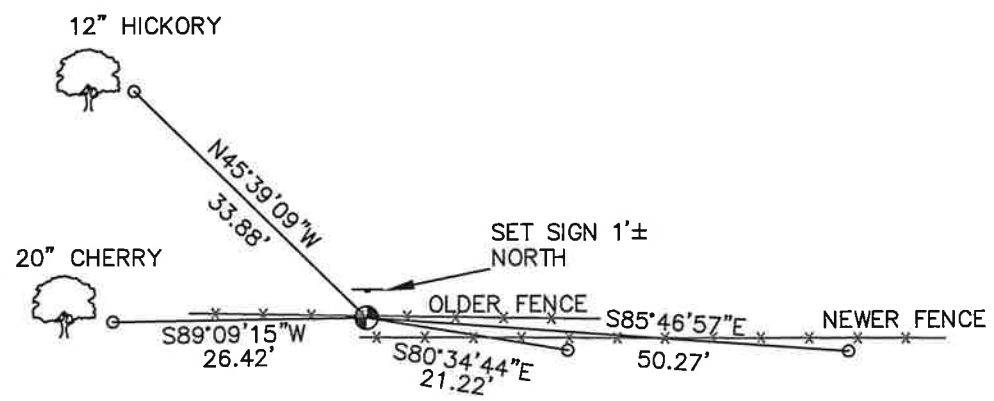
FOUND AND ACCEPTED HARRISON AS SET BY HARLEY SIME, VERIFIED EXISTING TIES AND TOOK NEW TIES AS SHOWN.

CREW/WITNESS FOR CORNER LOCATION
-CHRISTIAN J. RUNNING
-LEIGH A. RUNNING

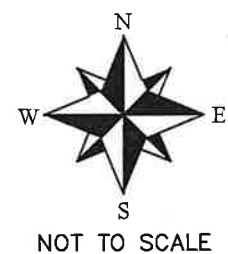
FIELD WORK COMPLETED 10/17/2023

I, CHRISTIAN J. RUNNING RLS 2558, HEREBY CERTIFY THAT THE COORDINATES PROVIDED ON THIS RECORD WERE DETERMINED BY ME OR UNDER MY DIRECT SUPERVISION AND THAT THIS FORM IS CORRECT TO THE BEST OF MY KNOWLEDGE AND BELIEF.

CHRISTIAN J. RUNNING
PLS 2558
RUNNING LAND SURVEYING
700 DAUPHIN ST.
LA CROSSE, WI 54603



● CORNER LOCATION



LEGEND

- FOUND HARRISON MONUMENT
- SET 3/4" X 18" IRON BAR 1.5 LB/FT UNLESS NOTED

ALL BEARINGS ARE REFERENCED TO THE MONROE COUNTY COORDINATE SYSTEM NAD 83(2011)

MONROE COUNTY COORDINATES NAD 83(2011)
NORTHING: 358124.8319
EASTING: 702115.6127

I, Harley A. Sime, do hereby certify that on the twenty-ninth day of April 1981, I found (evidence) ~~no evidence~~ of the South 1/4 corner of Section 5, T16 N, R 1 W Fourth Principal Meridian, and I re-established said corner according to the Wisconsin Statutes as shown and described hereon.

Dated this 13th day of July 1981.

Harley A. Sime

County Surveyor, Monroe County

Approved: **HARLEY A. SIME**

MONROE CO. SURVEYOR

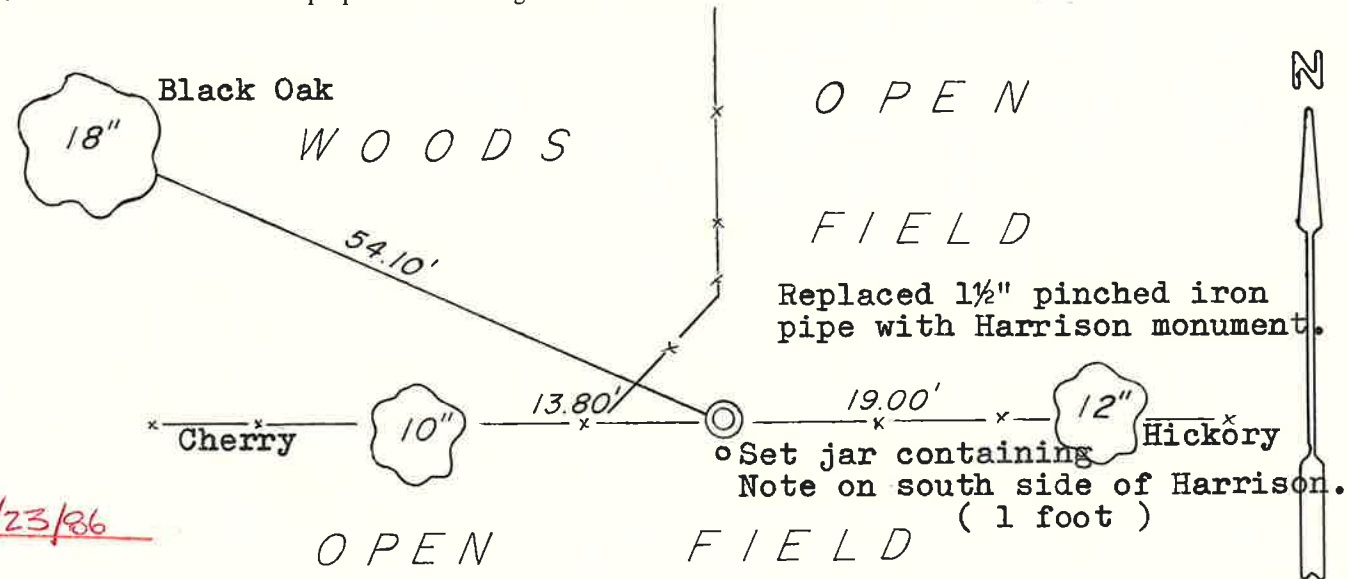
COUNTY SURVEYOR FORM NO. 1

Description of corner and witness monuments, references and accessories used to perpetuate the original or re-established location of this corner:

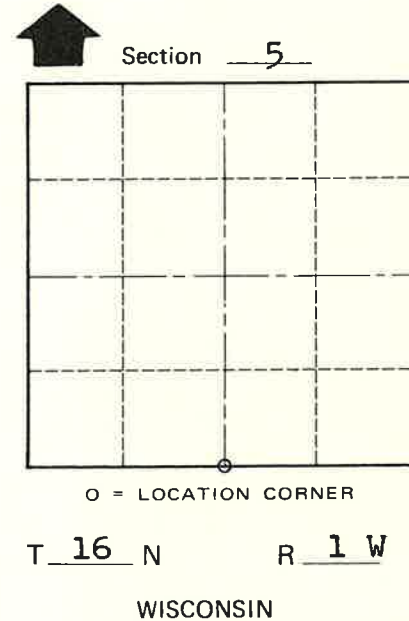
Witnesses to corner location:

Bryan H. Meyer - Crew Chief

Gary L. Dechant



SIGN PLACED 12/23/86
Ken Worlby



History of corner establishment since Original Government Survey
O.R. Dahl was here in April and June of 1868.
Fred Holden was here in March of 1902. I was here in May of 1967, and set a 1 1/2" pinched iron pipe.

Description of corner evidence found:

Found said pipe and replaced it with a Harrison monument

NOTE: Trees are double blazed with R.R. Spikes set in the lower blaze.

SURVEY CONTROL ORDER

Horizontal	_____
Vertical	_____

WISCONSIN COORDINATE SYSTEM

Corner	East (X)	North (Y)	Elevation (Z)	Zone
Control Sta. Name				

City, Village or Town of Wilton
County of Monroe