

# U.S. PUBLIC LAND SURVEY MONUMENT RECORD

HISTORY OF CORNER ESTABLISHMENT SINCE THE ORIGINAL GOVERNMENT SURVEY  
SEE PREVIOUS TIE SHEET.

DESCRIPTION OF CORNER EVIDENCE FOUND  
FOUND AND ACCEPTED HARRISON AS SET BY HARLEY SIME, VERIFIED EXISTING TIES AND TOOK NEW TIES AS SHOWN.

CREW/WITNESS FOR CORNER LOCATION  
-CHRISTIAN J. RUNNING  
-LEIGH A. RUNNING

FIELD WORK COMPLETED 10/17/2023

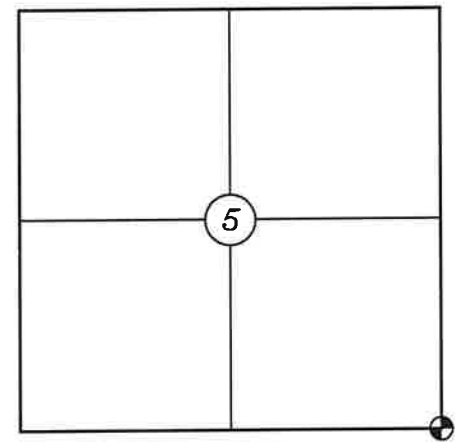
I, CHRISTIAN J. RUNNING RLS 2558, HEREBY CERTIFY THAT THE COORDINATES PROVIDED ON THIS RECORD WERE DETERMINED BY ME OR UNDER MY DIRECT SUPERVISION AND THAT THIS FORM IS CORRECT TO THE BEST OF MY KNOWLEDGE AND BELIEF.

CHRISTIAN J. RUNNING  
PLS 2558  
RUNNING LAND SURVEYING  
700 DAUPHIN ST.  
LA CROSSE, WI 54603

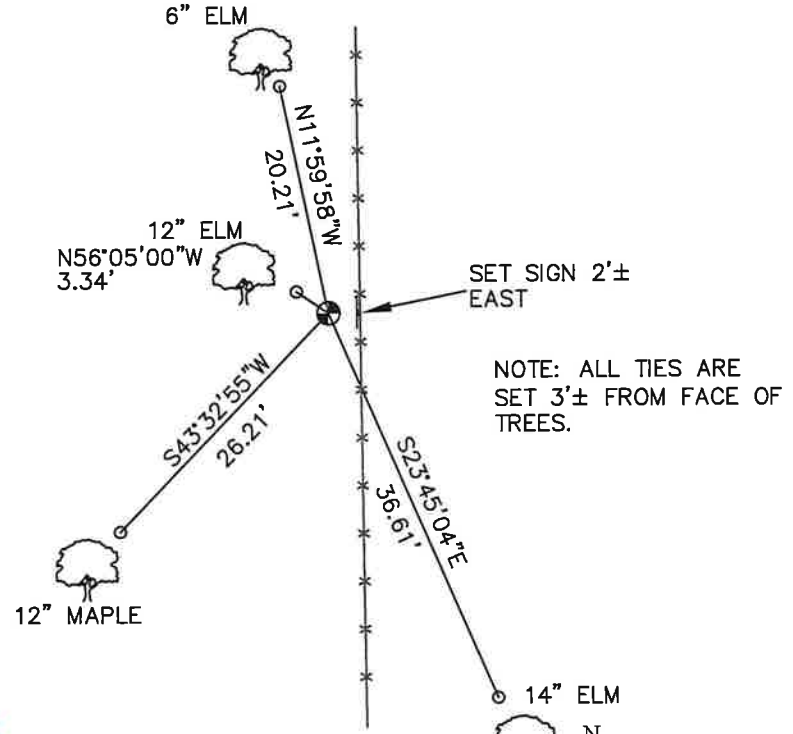


MONROE COUNTY COORDINATES NAD 83(2011)  
NORTHING: 358133.9159  
EASTING: 704726.6132

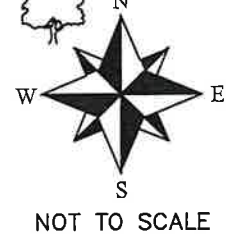
SECTION 5, T16N, R1W,  
TOWN OF WILTON  
MONROE COUNTY  
WISCONSIN.



● CORNER LOCATION



NOTE: ALL TIES ARE SET 3'± FROM FACE OF TREES.



LEGEND

- FOUND HARRISON MONUMENT
- SET 3/4" X 18" IRON BAR 1.5 LB/FT UNLESS NOTED

ALL BEARINGS ARE REFERENCED TO THE MONROE COUNTY COORDINATE SYSTEM NAD 83(2011)

I, Harley A. Sime, do hereby certify that on the twenty-ninth day of April 1981, I found ~~evidence~~ (no evidence) of the Southeast corner of Section 5, T 16 N, R 1 W Fourth Principal Meridian, and I re-established said corner according to the Wisconsin Statutes as shown and described hereon.

Dated this 18th day of August 1981.

Harley A. Sime

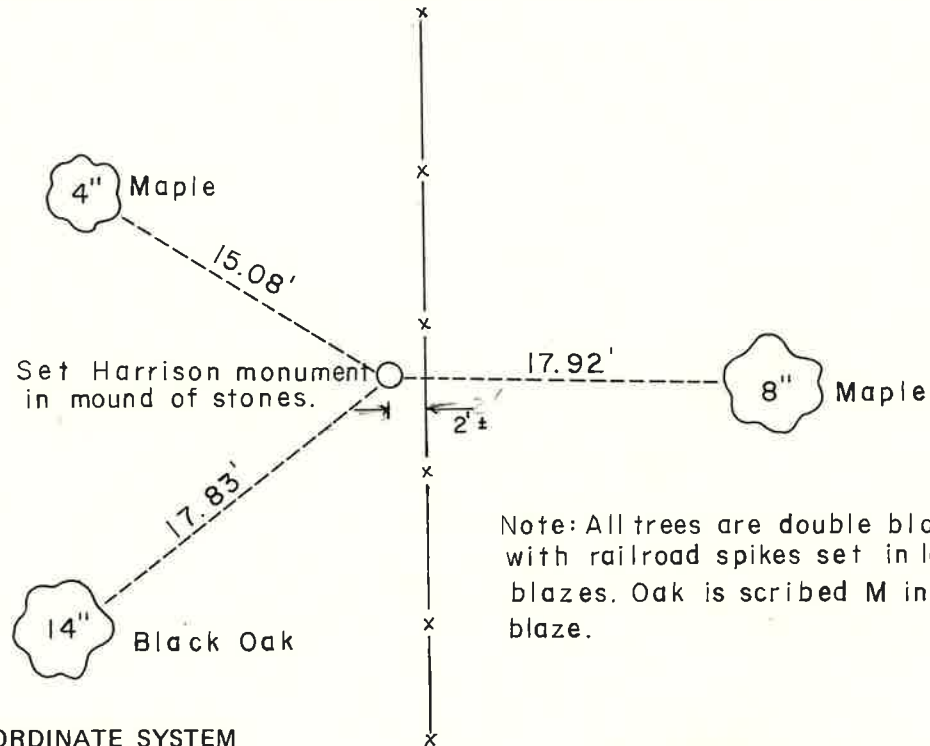
Monroe County Surveyor

Approved: <sup>Title</sup> **HARLEY A. SIME**  
**MONROE CO. SURVEYOR**

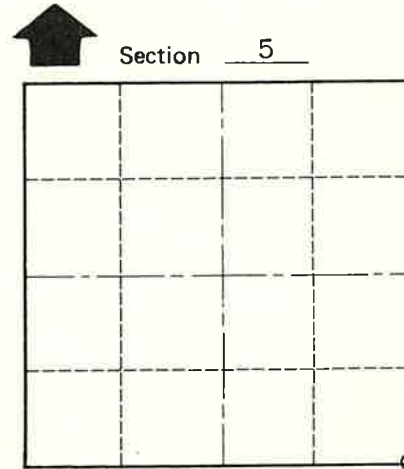
Description of corner and witness monuments, references and accessories used to perpetuate the original or re-established location of this corner:

Witnesses to corner location:

Bryan H. Meyer - Crew Chief  
Gary L. Dechant  
Garold A. Sime



Note: All trees are double blazed with railroad spikes set in lower blazes. Oak is scribed M in upper blaze.



O = LOCATION CORNER

T 16 N R 1 W

WISCONSIN

COUNTY SURVEYOR FORM NO. 1

SURVEY CONTROL ORDER

Horizontal	_____
Vertical	_____

WISCONSIN COORDINATE SYSTEM

Corner	East (X)	North (Y)	Elevation (Z)	Zone
Control Sta. Name				

~~City, Village or Town~~ of Wilton

County of Monroe