

U.S. PUBLIC LAND SURVEY MONUMENT RECORD

SECTION 4, T16N, R1W,
TOWN OF WILTON
MONROE COUNTY
WISCONSIN.

HISTORY OF CORNER ESTABLISHMENT SINCE THE ORIGINAL GOVERNMENT SURVEY
SEE PREVIOUS TIE SHEET.

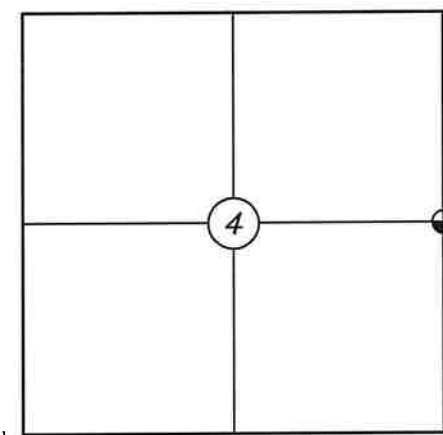
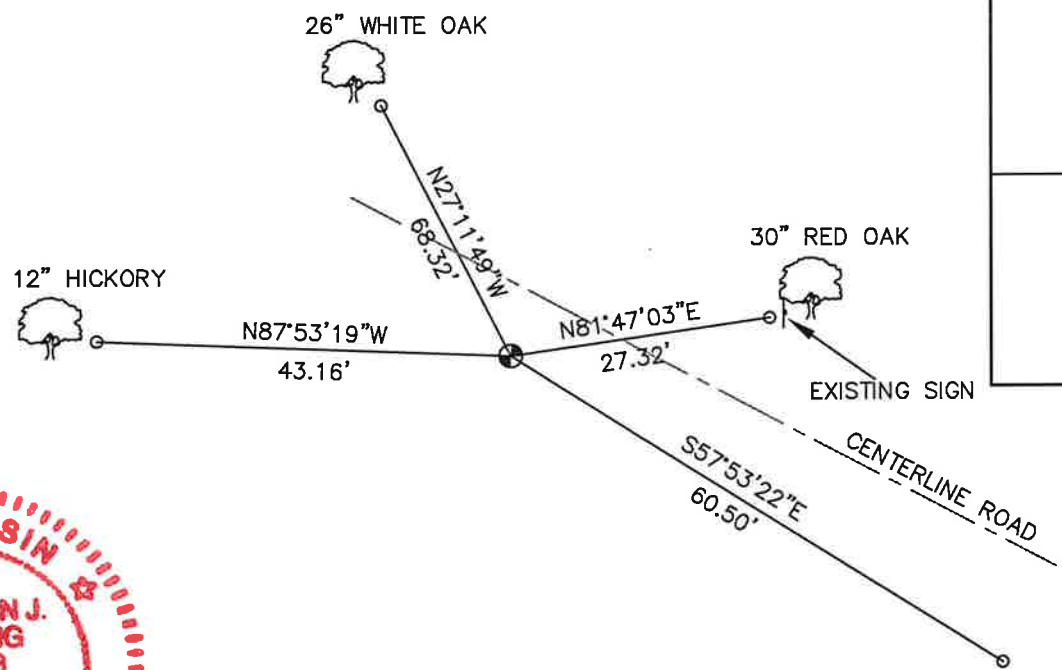
DESCRIPTION OF CORNER EVIDENCE FOUND
FOUND AND ACCEPTED A 1 1/4" IRON BAR. IT SEEMS THAT THE OLD HARRISON MUST HAVE BEEN
KNOCKED OUT BY ROAD CONSTRUCTION.

CREW/WITNESS FOR CORNER LOCATION
-CHRISTIAN J. RUNNING
-LEIGH A. RUNNING

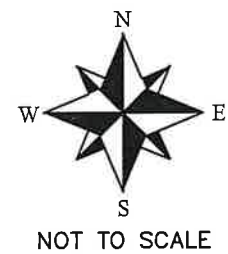
FIELD WORK COMPLETED 10/17/2023

I, CHRISTIAN J. RUNNING RLS 2558, HEREBY
CERTIFY THAT THE COORDINATES PROVIDED ON
THIS RECORD WERE DETERMINED BY ME OR UNDER
MY DIRECT SUPERVISION AND THAT THIS FORM IS
CORRECT TO THE BEST OF MY KNOWLEDGE AND
BELIEF.

CHRISTIAN J. RUNNING
PLS 2558
RUNNING LAND SURVEYING
700 DAUPHIN ST.
LA CROSSE, WI 54603



● CORNER LOCATION



LEGEND
● FOUND 1 1/4" IRON BAR
○ SET 3/4" X 18" IRON BAR 1.5 LB/FT
UNLESS NOTED

ALL BEARINGS ARE REFERENCED TO
THE MONROE COUNTY COORDINATE SYSTEM NAD 83(2011)

MONROE COUNTY COORDINATES NAD 83(2011)
NORTHING: 360825.3665
EASTING: 709952.1684

I, William C. Jung, do hereby certify that on the 28th day of October 1977, I found (evidence) (~~no evidence~~) of the E 1/4 corner of Section 4, T 16 N, R 1 W, Fourth Principal Meridian, and I re-established said corner according to the Wisconsin Statutes as shown and described hereon.

Dated this 14th day of Nov. 1977.

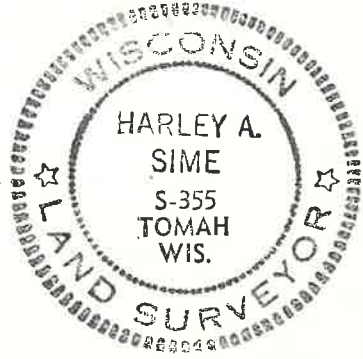
William C. Jung, R.L.S. 1323
Crew Chief, County Surveyor's
 Title Office

History of original corner establishment:

W. F. Schroeder set an iron rod here in 1903.
 Gary Sime, R.L.S., also found this iron rod on August 23, 1977.

Description of corner evidence found:

Found the iron rod set by Schroeder in December of 1903. Removed the iron rod and replaced it with a Harrison.

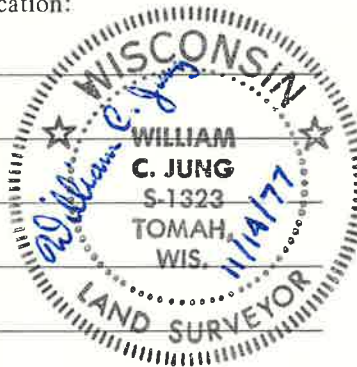


COUNTY SURVEYOR FORM NO. 1

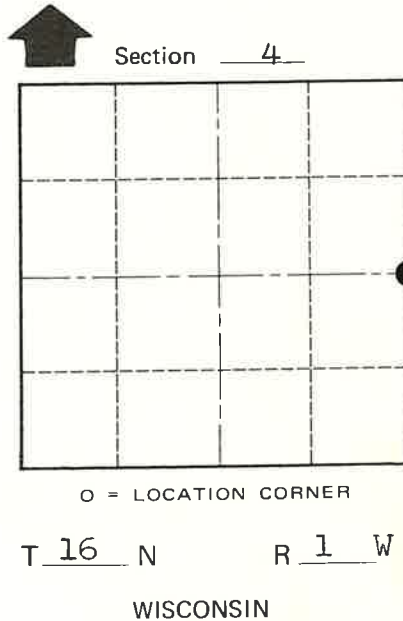
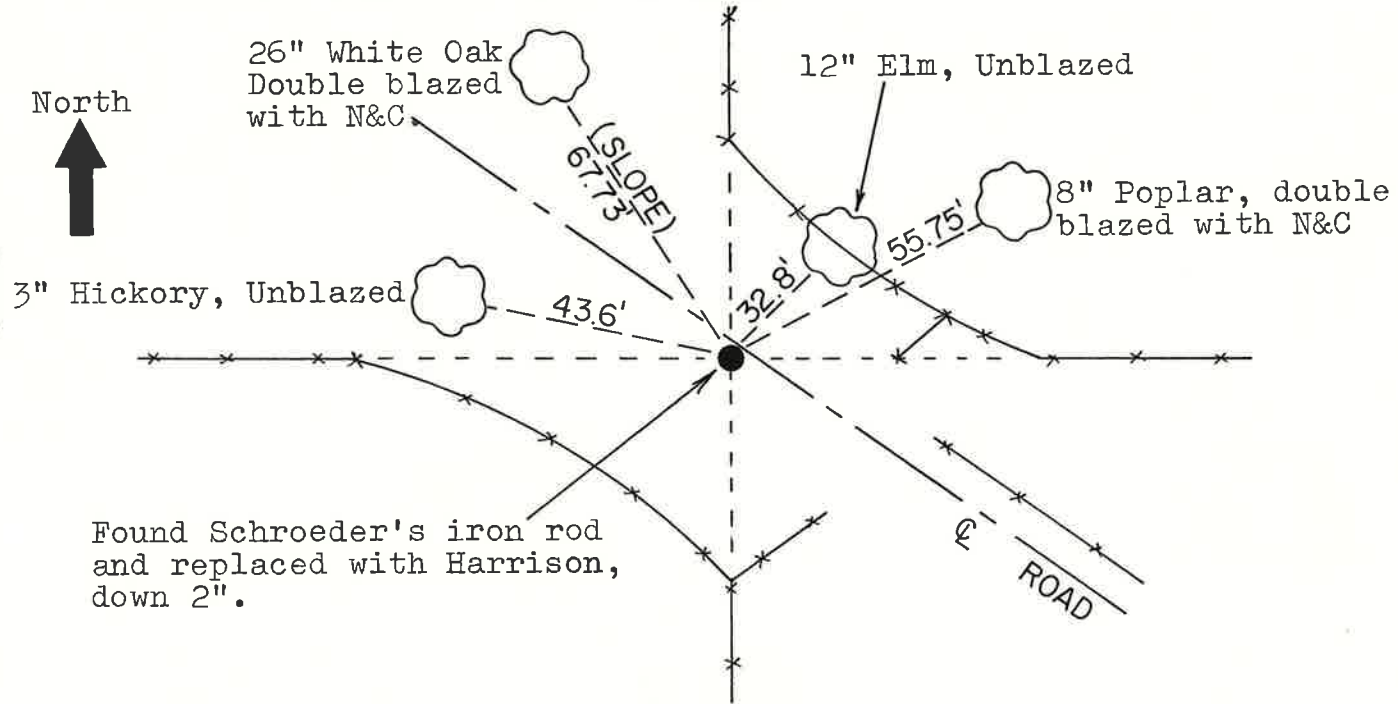
Description of corner and witness monuments, references and accessories used to perpetuate the original or re-established location of this corner:
 Set a Harrison in the road.

Witnesses to corner location:

W. C. Jung
G. Dechant



Approved: Harley Sime
 County Surveyor



SURVEY CONTROL ORDER

Horizontal	
Vertical	Scaled Elev.

WISCONSIN COORDINATE SYSTEM

Corner	East (X)	North (Y)	Elevation (Z)	Zone
Control Sta. Name			1340' ±	

City, Village or Town Wilton
 County of Monroe

O.K.