

U.S. PUBLIC LAND SURVEY MONUMENT RECORD

ROMPORTL #21503082000

HISTORY OF CORNER ESTABLISHMENT SINCE THE ORIGINAL GOVERNMENT SURVEY
SEE PREVIOUS TIE SHEET.

DESCRIPTION OF CORNER EVIDENCE FOUND

FOUND AND ACCEPTED 1 1/4" IRON BAR AS SET BY GARY DECHANT, VERIFIED EXISTING TIES AND TOOK NEW TIES AS SHOWN.

CREW/WITNESS FOR CORNER LOCATION
-CHRISTIAN J. RUNNING
-

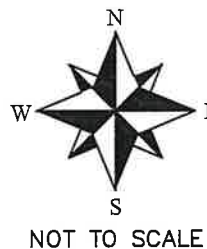
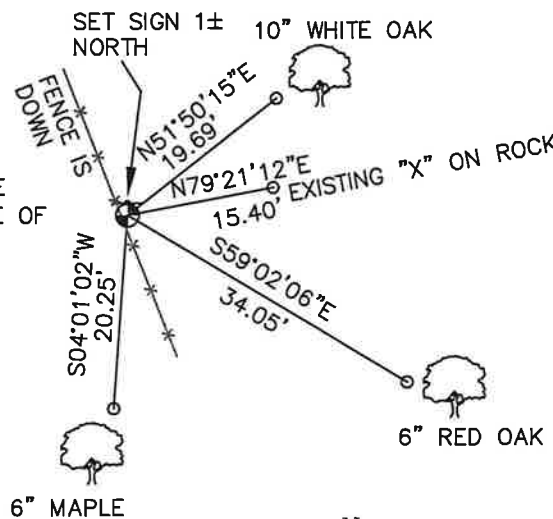
FIELD WORK COMPLETED 9/12/2023

I, CHRISTIAN J. RUNNING RLS 2558, HEREBY CERTIFY THAT THE COORDINATES PROVIDED ON THIS RECORD WERE DETERMINED BY ME OR UNDER MY DIRECT SUPERVISION AND THAT THIS FORM IS CORRECT TO THE BEST OF MY KNOWLEDGE AND BELIEF.

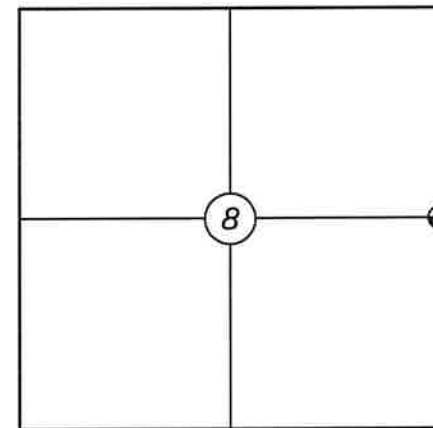
CHRISTIAN J. RUNNING
PLS 2558
RUNNING LAND SURVEYING
700 DAUPHIN ST.
LA CROSSE, WI 54603



NOTE: ALL TIES ARE SET 3'± FROM FACE OF TREES. TREES ARE DOUBLE BLAZED.



SECTION 8, T15N, R3W,
TOWN OF JEFFERSON
MONROE COUNTY
WISCONSIN.



● CORNER LOCATION

LEGEND

- FOUND 1 1/4" IRON BAR
- SET 3/4" X 18" IRON BAR 1.5 LB/FT UNLESS NOTED

ALL BEARINGS ARE REFERENCED TO THE MONROE COUNTY COORDINATE SYSTEM NAD 83(2011)

MONROE COUNTY COORDINATES NAD 83(2011)
NORTHING: 323812.1792
EASTING: 641985.9067

CERTIFICATE

CERTIFIED LAND CORNER

21503082000

No. 36

I, Gary L. Dechant, do hereby certify that on the 19th day of November 1987, I found ~~(evidence)~~ (no evidence) of the E 1/2 corner of Section 8, T15 N, R 3W Fourth Principal Meridian, and I re-established said corner according to the Wisconsin Statutes as shown and described hereon.

History of corner establishment since Original Government Survey
Fred Holden was here in April and October of 1910.

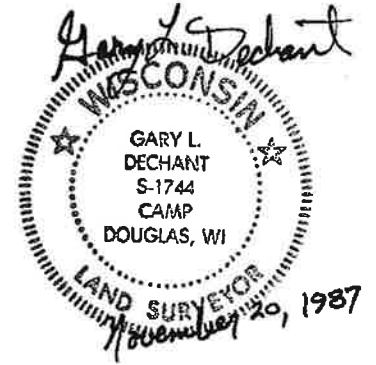
Dated this 20th day of Nov. 1987.

Description of corner evidence found:

Set by single proportionate measurement.

Gary L. Dechant

Registered Land Surveyor, 1744
Title



Description of corner and witness monuments, references and accessories used to perpetuate the original or re-established location of this corner:

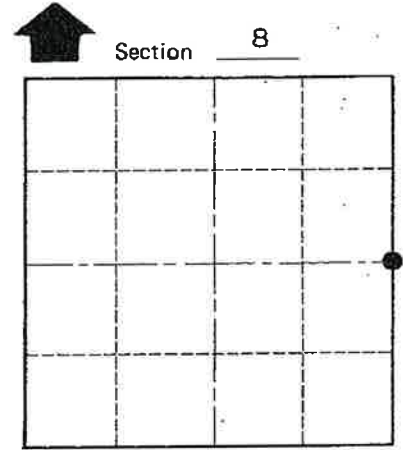
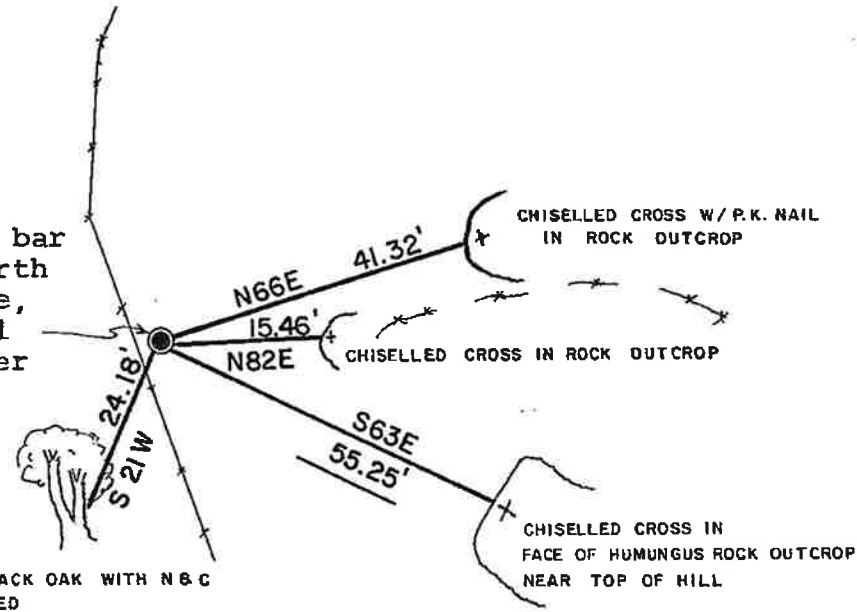
Witnesses to corner location:

David E. Madison

Gary L. Dechant

COUNTY SURVEYOR FORM NO. 1

Set 1 1/4"x30" round iron bar with survey sign on north side. Falls on NW slope, made flat shelf in soil hopefully to keep corner from being covered by erosion



Section 8
T 15 N R 3 W
WISCONSIN

SURVEY CONTROL ORDER

Horizontal _____
Vertical _____

WISCONSIN COORDINATE SYSTEM

Corner	East (X)	North (Y)	Elevation (Z)	Zone
Control Sta. Name				

~~Village or~~ Town Jefferson
County of Monroe