

U.S. PUBLIC LAND SURVEY MONUMENT RECORD

ROMPORTL #21503052000

HISTORY OF CORNER ESTABLISHMENT SINCE THE ORIGINAL GOVERNMENT SURVEY
SEE PREVIOUS TIE SHEET.

**SECTION 5, T15N, R3W,
TOWN OF JEFFERSON
MONROE COUNTY
WISCONSIN.**

DESCRIPTION OF CORNER EVIDENCE FOUND

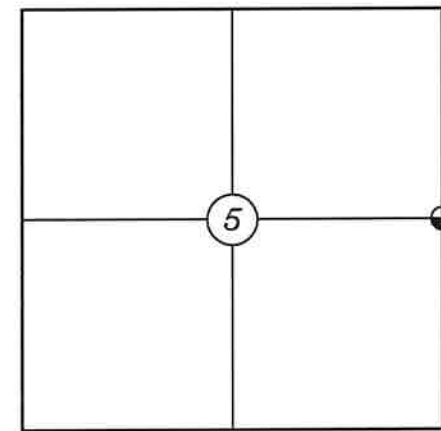
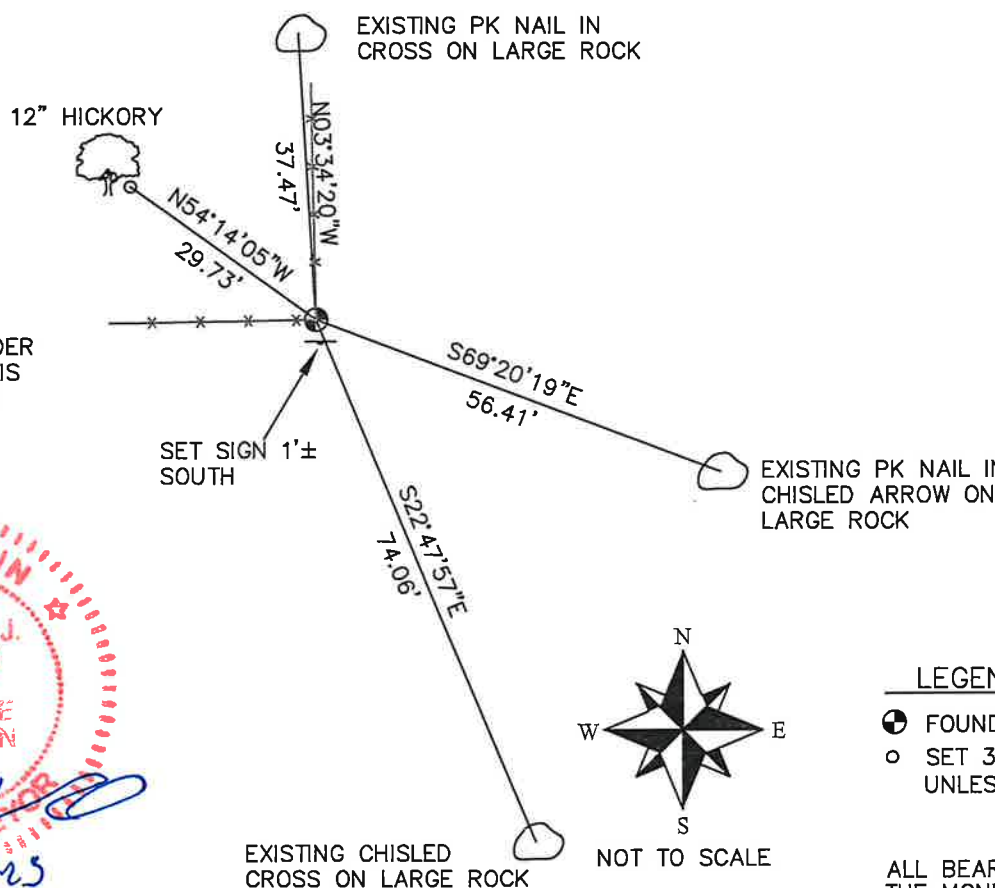
FOUND AND ACCEPTED 1 1/4" IRON BAR AS SHOWN ON PREVIOUS TIE SHEET, VERIFIED EXISTING TIES AND TOOK NEW TIES AS SHOWN.

CREW/WITNESS FOR CORNER LOCATION
-CHRISTIAN J. RUNNING
-

FIELD WORK COMPLETED 9/11/2023

I, CHRISTIAN J. RUNNING RLS 2558, HEREBY CERTIFY THAT THE COORDINATES PROVIDED ON THIS RECORD WERE DETERMINED BY ME OR UNDER MY DIRECT SUPERVISION AND THAT THIS FORM IS CORRECT TO THE BEST OF MY KNOWLEDGE AND BELIEF.

CHRISTIAN J. RUNNING
PLS 2558
RUNNING LAND SURVEYING
700 DAUPHIN ST.
LA CROSSE, WI 54603

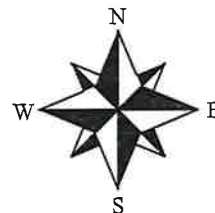


⊕ CORNER LOCATION

LEGEND

- ⊕ FOUND 1 1/4" IRON BAR
- SET 3/4" X 18" IRON BAR 1.5 LB/FT UNLESS NOTED

ALL BEARINGS ARE REFERENCED TO THE MONROE COUNTY COORDINATE SYSTEM NAD 83(2011)



MONROE COUNTY COORDINATES NAD 83(2011)
NORTHING: 329067.5834
EASTING: 642018.1947

CERTIFICATE

CERTIFIED LAND CORNER

I, Gary L. Dechant, do hereby certify that on the 19th day of November 1987, I found (evidence) (~~no evidence~~) of the E¹/₄ corner of Section 5, T 15 N, R 3 W Fourth Principal Meridian, and I re-established said corner according to the Wisconsin Statutes as shown and described hereon.

Dated this 23rd day of Nov. 1987.

Gary L. Dechant

Registered Land Surveyor, 1744
Title

History of corner establishment since Original Government Survey

Description of corner evidence found:

Accepted fence corner as best available evidence as it fits between section corners very well for line and distance.

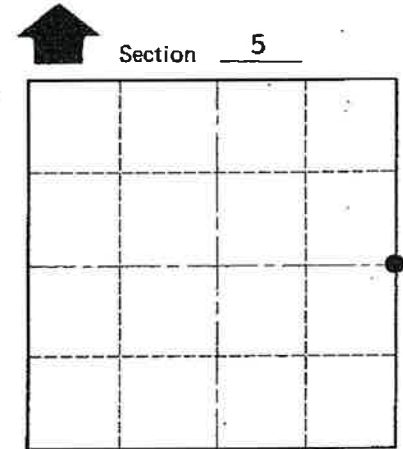


Description of corner and witness monuments, references and accessories used to perpetuate the original or re-established location of this corner:

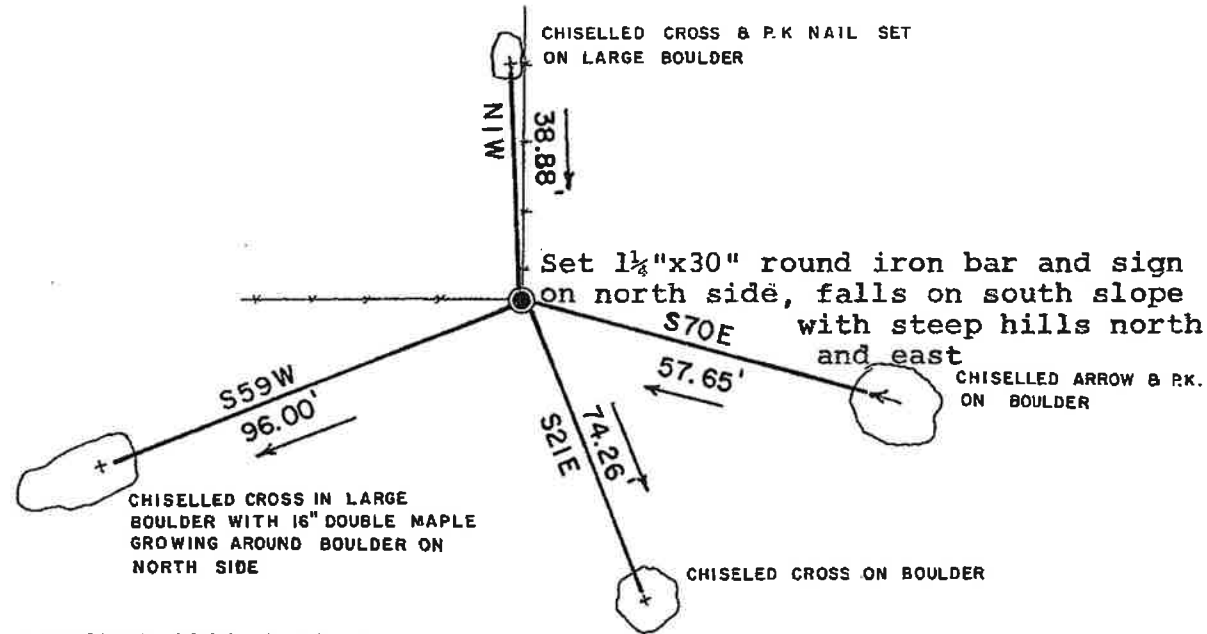
Witnesses to corner location:

David E. Madison

Gary L. Dechant



● = LOCATION CORNER
T 15 N R 3 W
WISCONSIN



SURVEY CONTROL ORDER

Horizontal _____
Vertical _____

WISCONSIN COORDINATE SYSTEM

Corner	East (X)	North (Y)	Elevation (Z)	Zone
Control Sta. Name				

~~City, Village or~~ Town Jefferson
County of Monroe

COUNTY SURVEYOR FORM NO. 1