

U.S. PUBLIC LAND SURVEY MONUMENT RECORD

ROMPORTL #21503050020

HISTORY OF CORNER ESTABLISHMENT SINCE THE ORIGINAL GOVERNMENT SURVEY
SEE PREVIOUS TIE SHEET.

DESCRIPTION OF CORNER EVIDENCE FOUND

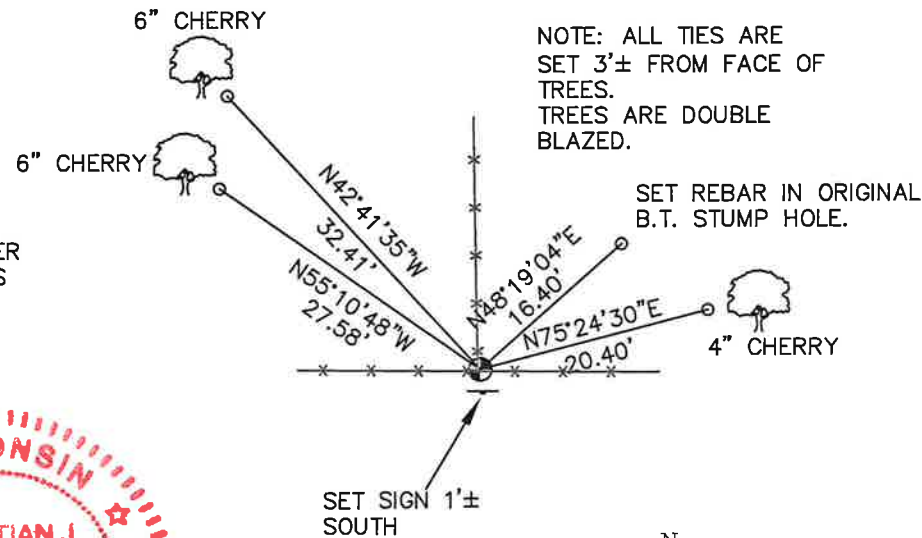
FOUND AND ACCEPTED 1 1/4" IRON BAR AS SET BY GARY DECHANT, VERIFIED EXISTING TIES AND TOOK NEW TIES AS SHOWN.

CREW/WITNESS FOR CORNER LOCATION
-CHRISTIAN J. RUNNING

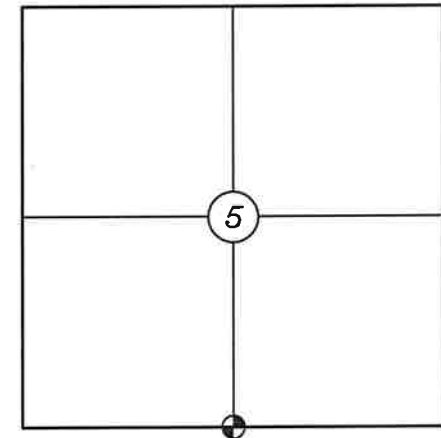
FIELD WORK COMPLETED 9/11/2023

I, CHRISTIAN J. RUNNING RLS 2558, HEREBY CERTIFY THAT THE COORDINATES PROVIDED ON THIS RECORD WERE DETERMINED BY ME OR UNDER MY DIRECT SUPERVISION AND THAT THIS FORM IS CORRECT TO THE BEST OF MY KNOWLEDGE AND BELIEF.

CHRISTIAN J. RUNNING
PLS 2558
RUNNING LAND SURVEYING
700 DAUPHIN ST.
LA CROSSE, WI 54603



**SECTION 5, T15N, R3W,
TOWN OF JEFFERSON
MONROE COUNTY
WISCONSIN.**



● CORNER LOCATION



LEGEND

- FOUND 1 1/4" IRON BAR
- SET 3/4" X 18" IRON BAR 1.5 LB/FT UNLESS NOTED

ALL BEARINGS ARE REFERENCED TO THE MONROE COUNTY COORDINATE SYSTEM NAD 83(2011)

MONROE COUNTY COORDINATES NAD 83(2011)
NORTHING: 326593.0189
EASTING: 639364.2215

CERTIFICATE

CERTIFIED LAND CORNER

21503050020

No. 30

I, Gary L. Dechant, do hereby certify that on the 19th day of November 1987, I found (evidence) ~~(evidence)~~ of the N $\frac{1}{4}$ corner of Section 8, T 15 N, R 3 W Fourth Principal Meridian, and I re-established said corner according to the Wisconsin Statutes as shown and described hereon.

Dated this 23rd day of Nov. 1987.

Gary L. Dechant
Registered Land Surveyor, 1744
Title

History of corner establishment since Original Government Survey
Fred Holden was here in April and October of 1910.

Description of corner evidence found:

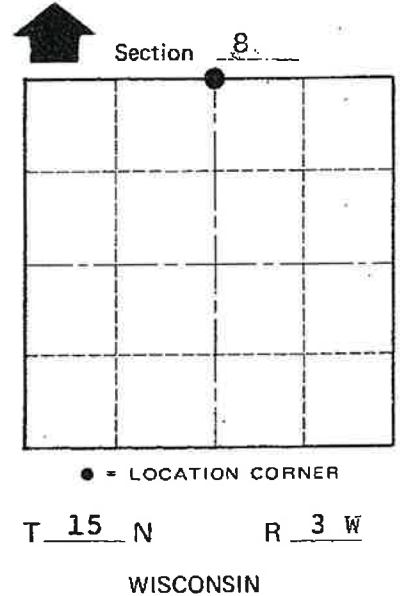
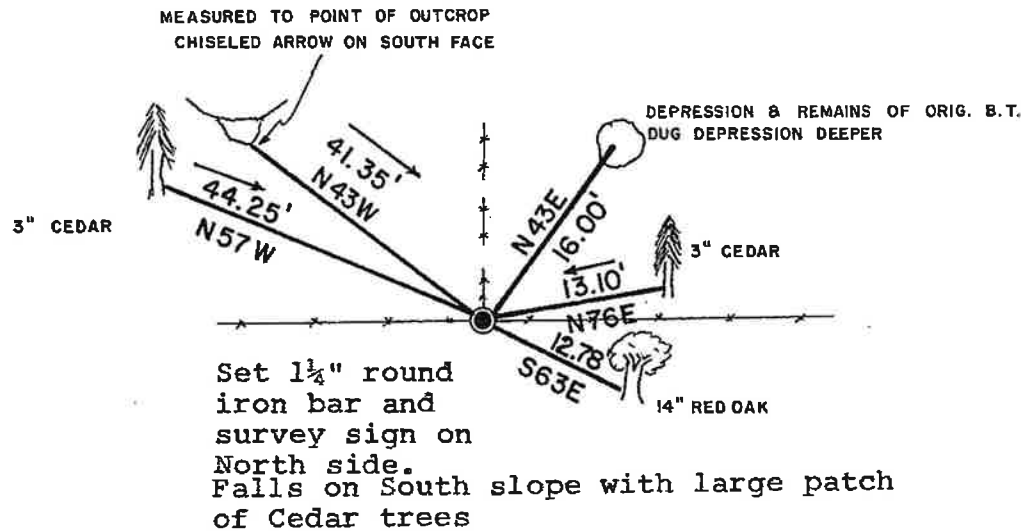
Found remains of Original B.T., which was also found by Holden, reset corner from Bearing and distance given in Original notes. Falls in existing fence corner, said fence corner in poor condition. Apparently, the original surveyor's had problems in this area as there is a severe bend and distance variance. However, weldonmatch Holden's distances between corners well, from this N $\frac{1}{4}$ to the NW corner of section 8.



Description of corner and witness monuments, references and accessories used to perpetuate the original or re-established location of this corner:

Witnesses to corner location:

David E. Madison
Gary L. Dechant



COUNTY SURVEYOR FORM NO. 1

SURVEY CONTROL ORDER

Horizontal _____
Vertical _____

WISCONSIN COORDINATE SYSTEM

Corner	East (X)	North (Y)	Elevation (Z)	Zone
Control Sta. Name				

(Bearing trees double blazed with N&C's set)

~~City, Village or~~ Town Jefferson
County of Monroe