

U.S. PUBLIC LAND SURVEY MONUMENT RECORD

ROMPORTL #21503080000

HISTORY OF CORNER ESTABLISHMENT SINCE THE ORIGINAL GOVERNMENT SURVEY
SEE PREVIOUS TIE SHEET.

**SECTION 8, T15N, R3W,
TOWN OF JEFFERSON
MONROE COUNTY
WISCONSIN.**

DESCRIPTION OF CORNER EVIDENCE FOUND

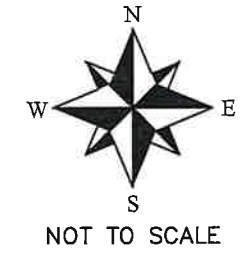
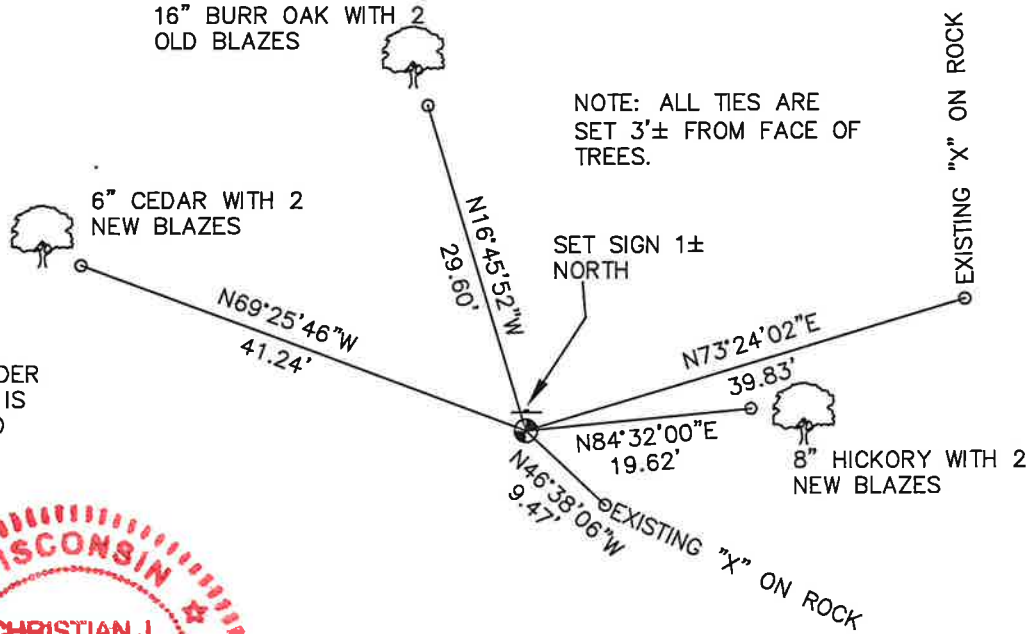
FOUND AND ACCEPTED 1 1/4" IRON BAR AS SET BY GARY DECHANT, VERIFIED EXISTING TIES AND TOOK NEW TIES AS SHOWN.

CREW/WITNESS FOR CORNER LOCATION
-CHRISTIAN J. RUNNING

FIELD WORK COMPLETED 9/12/2023

I, CHRISTIAN J. RUNNING RLS 2558, HEREBY CERTIFY THAT THE COORDINATES PROVIDED ON THIS RECORD WERE DETERMINED BY ME OR UNDER MY DIRECT SUPERVISION AND THAT THIS FORM IS CORRECT TO THE BEST OF MY KNOWLEDGE AND BELIEF.

CHRISTIAN J. RUNNING
PLS 2558
RUNNING LAND SURVEYING
700 DAUPHIN ST.
LA CROSSE, WI 54603

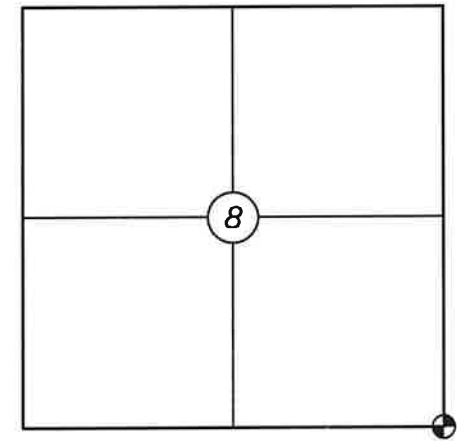


LEGEND

- ⊕ FOUND 1 1/4" IRON BAR
- SET 3/4" X 18" IRON BAR 1.5 LB/FT UNLESS NOTED

ALL BEARINGS ARE REFERENCED TO THE MONROE COUNTY COORDINATE SYSTEM NAD 83(2011)

MONROE COUNTY COORDINATES NAD 83(2011)
NORTHING: 321194.3179
EASTING: 642046.4532



⊕ CORNER LOCATION

21503080000

No. 49

CERTIFICATE

CERTIFIED LAND CORNER

I, Gary L. Dechant, do hereby certify that on the 14th day of May 19 87, I found (evidence) (no evidence) of the NE corner of Section 17, T 15 N, R 3 W Fourth Principal Meridian, and I re-established said corner according to the Wisconsin Statutes as shown and described hereon.

Dated this 18th day of May 1987.

Gary L. Dechant

Reg. Land Surveyor, S-1744

History of corner establishment since Original Government Survey

No known recorded history.

Description of corner evidence found:

Accepted stone pile in North-South fence as the corner. Also found some pieces of wire to the east that lined up with the stone pile. This fits section corners to the south and to the west very well.

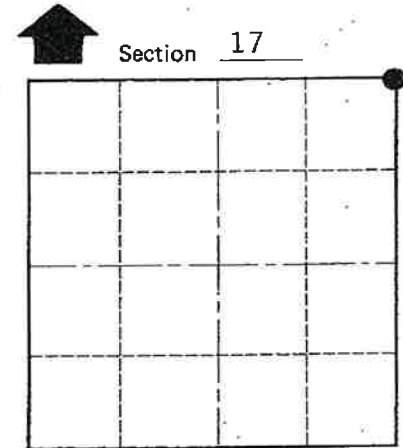
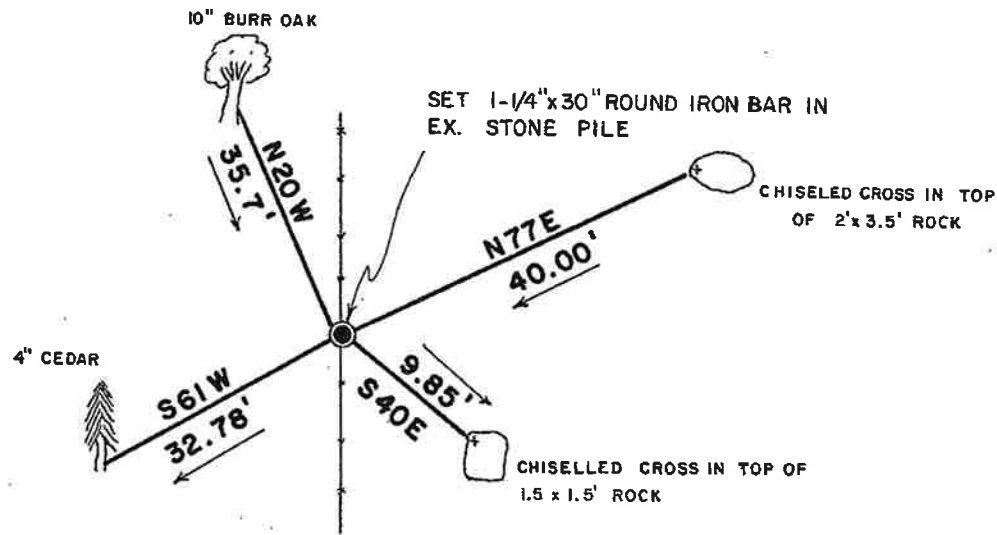


Description of corner and witness monuments, references and accessories used to perpetuate the original or re-established location of this corner:

Witnesses to corner location:

David E. Madison

Gary L. Dechant



• = LOCATION CORNER

T 15 N R 3 W

WISCONSIN

(Trees double blazed with N&C's set)

SURVEY CONTROL ORDER

Horizontal _____
Vertical _____

WISCONSIN COORDINATE SYSTEM

Corner	East (X)	North (Y)	Elevation (Z)	Zone
Control Sta. Name				

City, Village or Town Jefferson

County of Monroe

COUNTY SURVEYOR FORM NO. 1