

# U.S. PUBLIC LAND SURVEY MONUMENT RECORD

HISTORY OF CORNER ESTABLISHMENT SINCE THE ORIGINAL GOVERNMENT SURVEY  
SEE PREVIOUS TIE SHEET.

DESCRIPTION OF CORNER EVIDENCE FOUND

FOUND AND ACCEPTED HARRISON MONUMENT AS SHOWN ON PREVIOUS TIE SHEET AND TOOK NEW TIES AS SHOWN.

CREW/WITNESS FOR CORNER LOCATION  
-CHRISTIAN J. RUNNING  
-

FIELD WORK COMPLETED 9/08/2023

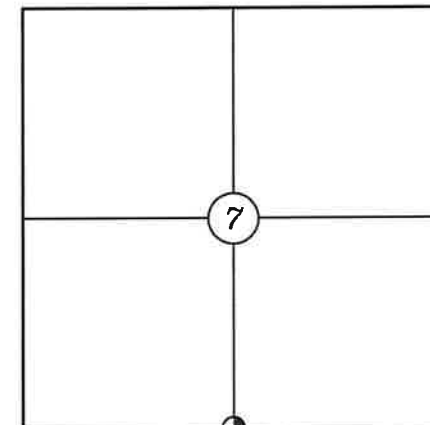
I, CHRISTIAN J. RUNNING RLS 2558, HEREBY CERTIFY THAT THE COORDINATES PROVIDED ON THIS RECORD WERE DETERMINED BY ME OR UNDER MY DIRECT SUPERVISION AND THAT THIS FORM IS CORRECT TO THE BEST OF MY KNOWLEDGE AND BELIEF.

CHRISTIAN J. RUNNING  
PLS 2558  
RUNNING LAND SURVEYING  
700 DAUPHIN ST.  
LA CROSSE, WI 54603

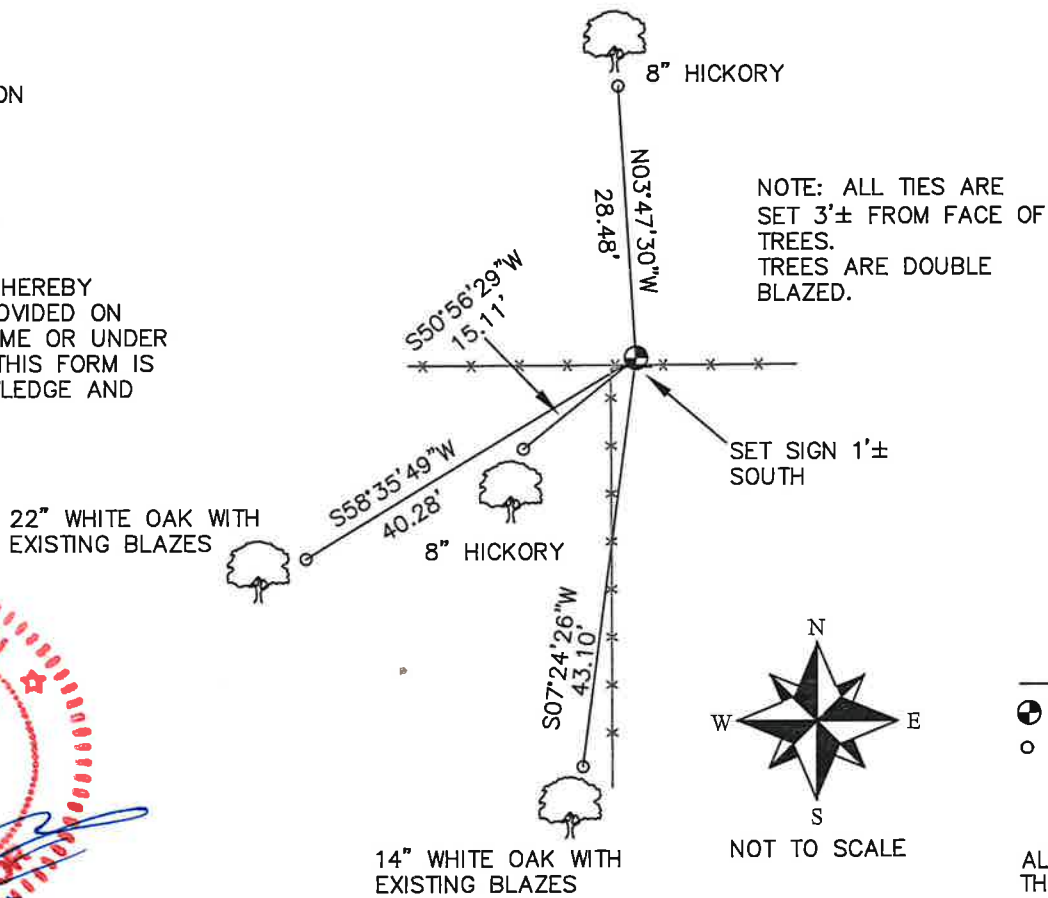


MONROE COUNTY COORDINATES NAD 83(2011)  
NORTHING: 321126.2934  
EASTING: 634187.6454

SECTION 7, T15N, R3W,  
TOWN OF JEFFERSON  
MONROE COUNTY  
WISCONSIN.



⊕ CORNER LOCATION



NOTE: ALL TIES ARE SET 3'± FROM FACE OF TREES. TREES ARE DOUBLE BLAZED.

LEGEND

- ⊕ FOUND HARRISON
- SET 3/4" X 18" IRON BAR 1.5 LB/FT UNLESS NOTED

ALL BEARINGS ARE REFERENCED TO THE MONROE COUNTY COORDINATE SYSTEM NAD 83(2011)

CERTIFICATE

CERTIFIED LAND CORNER

I, Harley A. Sime, do hereby certify that on the 7<sup>th</sup> day of November 19 79, I found (evidence) (~~no evidence~~) of the North 1/4 corner of Section 18, T15 N, R 3 W, Fourth Principal Meridian, and I re-established said corner according to the Wisconsin Statutes as shown and described hereon.

History of original corner establishment:

No known recorded history since the original government survey.

Description of corner evidence found:

Accepted a 3-way fence corner as best available evidence. Set a Harrison Monument in a mound of rocks.

Dated this 12th day of Feb. 19 81.

Harley A. Sime, R.L.S. 355  
County Surveyor

COUNTY SURVEYOR FORM NO. 1

Description of corner and witness monuments, references and accessories used to perpetuate the original or re-established location of this corner:

Witnesses to corner location:

Dechant  
Tormoen

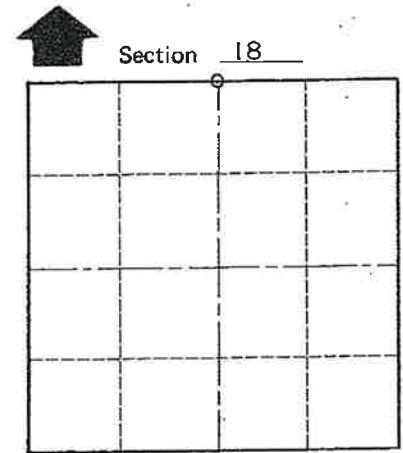
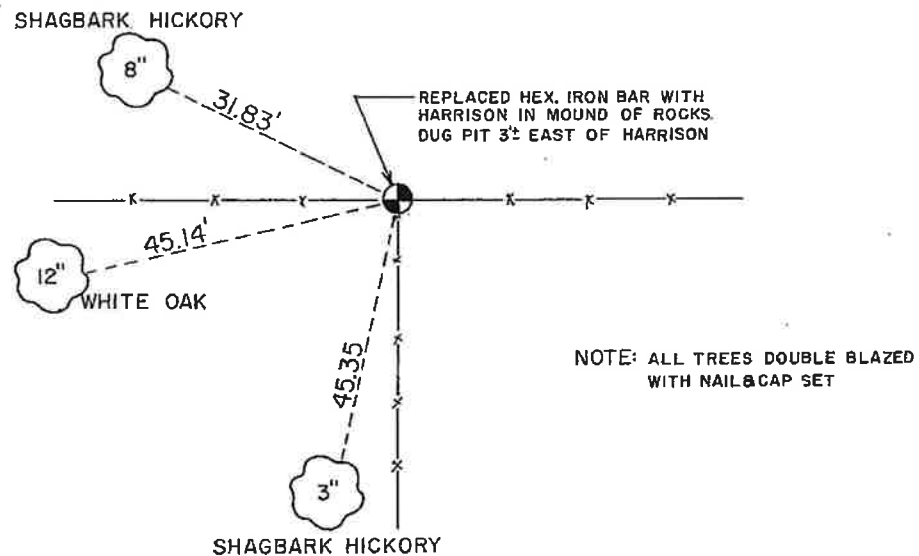
**Approved: HARLEY A. SIME**  
**MONROE CO. SURVEYOR**

SURVEY CONTROL ORDER

Horizontal	_____
Vertical	_____

WISCONSIN COORDINATE SYSTEM

Corner	East (X)	North (Y)	Elevation (Z)	Zone
Control Sta. Name				



O = LOCATION CORNER  
T 15 N R 3 W  
WISCONSIN

or Town Jefferson  
County of Monroe